

Courtesy Of Wendy Hamel Of RE/MAX River City

## \$157,500 - 201 10149 83 Avenue, Edmonton

MLS® #E4461791

**\$157,500**

2 Bedroom, 1.00 Bathroom, 864 sqft  
Condo / Townhouse on 0.00 Acres

Strathcona, Edmonton, AB

Urban Vibes~ Prime Location~ Major Potential! Calling all investors, students & first-time buyers â€” this 2-bedroom condo is your ticket to the heart of the action in Old Strathcona! Just steps from Whyte Aveâ€™s iconic shops, cafes, pubs, and the Old Strathcona Farmersâ€™ Market. Bike to the river valley in minutes, or chill on your oversized balcony & soak in the tree-lined street views. One of the largest units in the building at 864 sq. ft. of bright, functional living space with a classic galley kitchen, dining nook, super spacious primary bedroom, and bonus in-suite storage room for all your gear. The bathroom's been refreshed with a modern tub & tile surround. Comes with 1 assigned powered parking stall (but you might not even need it with this walkable location). 7-minute drive or easy transit to U of A or Downtown. Building has newer roof, windows & balconies. Whether you're living, renting, or investing â€” this spot is the ultimate launchpad for city life. Note: Some photos are virtually staged.

Built in 1971

### Essential Information

MLS® #	E4461791
Price	\$157,500



Bedrooms	2
Bathrooms	1.00
Full Baths	1
Square Footage	864
Acres	0.00
Year Built	1971
Type	Condo / Townhouse
Sub-Type	Lowrise Apartment
Style	Single Level Apartment
Status	Active

### **Community Information**

Address	201 10149 83 Avenue
Area	Edmonton
Subdivision	Strathcona
City	Edmonton
County	ALBERTA
Province	AB
Postal Code	T6E 2C5

### **Amenities**

Amenities	No Animal Home, Security Door
Parking Spaces	1
Parking	Stall

### **Interior**

Appliances	Hood Fan, Refrigerator, Stove-Electric
Heating	Baseboard, Natural Gas
# of Stories	4
Stories	1
Has Basement	Yes
Basement	None, No Basement

### **Exterior**

Exterior	Wood, Brick
Exterior Features	Back Lane, Corner Lot, Landscaped, Public Transportation, Schools, Shopping Nearby
Roof	Tar & Gravel
Construction	Wood, Brick

Foundation Concrete Perimeter

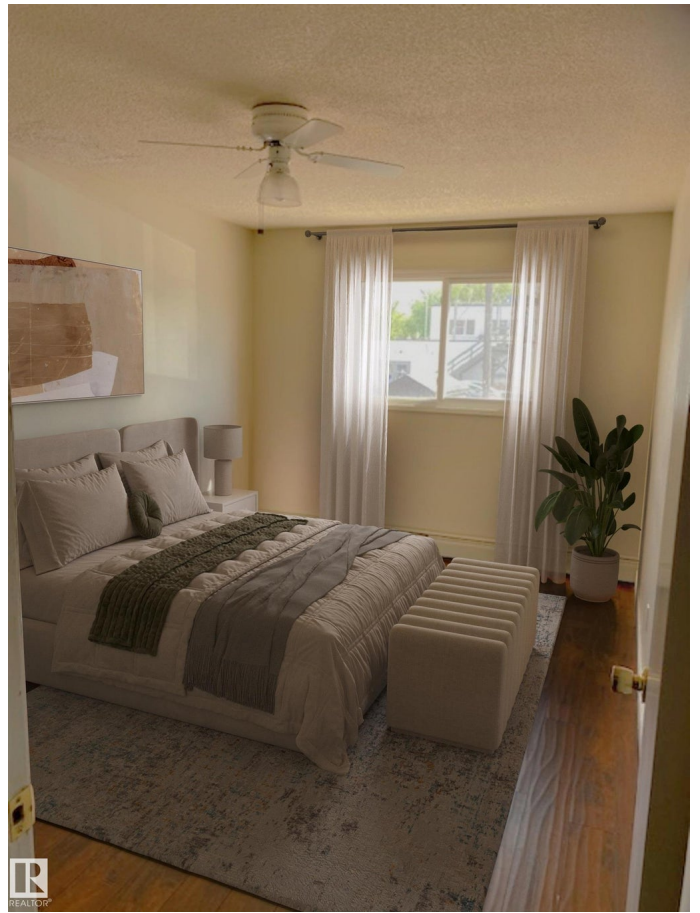
### Additional Information

Date Listed October 9th, 2025

Days on Market 5

Zoning Zone 15

Condo Fee \$625



DATA IS DEEMED RELIABLE BUT IS NOT GUARANTEED ACCURATE BY THE REALTORS® ASSOCIATION OF EDMONTON. COPYRIGHT 2025 BY THE REALTORS® ASSOCIATION OF EDMONTON. ALL RIGHTS RESERVED. Trademarks are owned or controlled by the Canadian Real Estate Association (CREA) and identify real estate professionals who are members of CREA (REALTOR®, REALTORS®) and/or the quality of services they provide (MLS®, Multiple Listing Service®)

Listing information last updated on October 14th, 2025 at 6:32pm MDT