

\$149,900 - 38 10208 113 Street, Edmonton

MLS® #E4461502

\$149,900

1 Bedroom, 1.00 Bathroom, 656 sqft

Condo / Townhouse on 0.00 Acres

Wâ@hkwÃªntÃ´win, Edmonton, AB

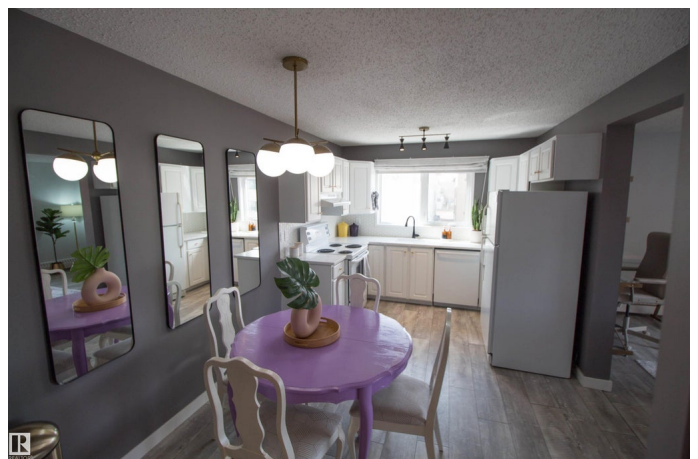
Welcome to Placid Place, centrally located in the heart of Wâ@hkwÃªntÃ´win (formerly Oliver), this 18+ building is well managed with a newer roof (2021), lobby upgrades, recent outdoor lighting and security enhancements. Condo board is very active and fiscally responsible. This pet-friendly building allows up to two pets per unit with no size or height restrictions for dogs - upon board approval!! The unit itself has many upgrades, cohesive laminate flooring throughout, quartz counters, newer energy efficient dishwasher, and modern light fixtures. Other perks differentiating this unit from others nearby, include: heated assigned garage parking, elevator - almost unheard of in low rise condo buildings, in-suite laundry, assigned secure storage locker, rare end unit with window in the kitchen and a large, northwest facing balcony for those nice summer evenings. All this, plus low condo fees, which include your heat and water. Close to shopping, public transit, downtown, and Edmontonâ€™s river valley trail system

Built in 1979

Essential Information

MLS® # E4461502

Price \$149,900



Bedrooms	1
Bathrooms	1.00
Full Baths	1
Square Footage	656
Acres	0.00
Year Built	1979
Type	Condo / Townhouse
Sub-Type	Lowrise Apartment
Style	Single Level Apartment
Status	Active

Community Information

Address	38 10208 113 Street
Area	Edmonton
Subdivision	WÃ©hkwÃ©ntÃ©win
City	Edmonton
County	ALBERTA
Province	AB
Postal Code	T5K 1P4

Amenities

Amenities	Closet Organizers, Deck
Parking Spaces	1
Parking	Heated, Parkade, Underground

Interior

Appliances	Dishwasher-Built-In, Dryer, Refrigerator, Stove-Countertop Electric, Washer
Heating	Baseboard, Natural Gas
# of Stories	4
Stories	1
Has Basement	Yes
Basement	None, No Basement

Exterior

Exterior	Wood, Brick, Metal
Exterior Features	Back Lane, Landscaped, Paved Lane
Roof	Flat, Roll Roofing
Construction	Wood, Brick, Metal

Foundation Concrete Perimeter

Additional Information

Date Listed October 8th, 2025
Days on Market 2
Zoning Zone 12
Condo Fee \$483

DATA IS DEEMED RELIABLE BUT IS NOT GUARANTEED ACCURATE BY THE REALTORS® ASSOCIATION OF EDMONTON. COPYRIGHT 2025 BY THE REALTORS® ASSOCIATION OF EDMONTON. ALL RIGHTS RESERVED.Trademarks are owned or controlled by the Canadian Real Estate Association (CREA) and identify real estate professionals who are members of CREA (REALTOR®, REALTORS®) and/or the quality of services they provide (MLS®, Multiple Listing Service®)
Listing information last updated on October 10th, 2025 at 11:47am MDT