

Courtesy Of Michael J Grue Of Century 21 Masters

\$229,900 - 305 14608 125 Street, Edmonton

MLS® #E4461109

\$229,900

2 Bedroom, 2.00 Bathroom, 1,061 sqft
Condo / Townhouse on 0.00 Acres

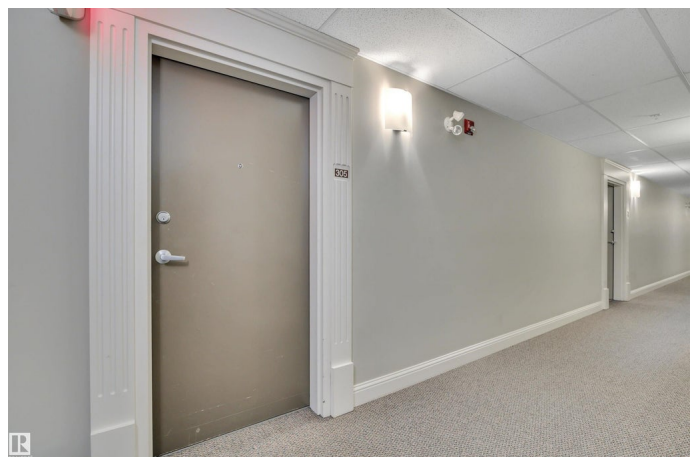
Baranow, Edmonton, AB

Welcome to suite 305 in Palisade Pointe Villas â€” a charming 2 BED, 2 BATH CONDOMINIUM in the heart of Baranow. Built in 2008, this low rise apartment, offers modern living with convenience. The open-concept design features 9 FT CEILINGS, a bright living/dining area, and a kitchen with STAINLESS STEEL APPLIANCES. The PRIMARY BEDROOM includes a 4-PIECE ENSUITE and WALK-IN CLOSET. The second bedroom sits adjacent to a 3-PIECE BATH with shower. Recent updates include LAMINATE FLOORING, CERAMIC TILE, and FRESH PAINT throughout. Stay comfortable year-round with CENTRAL AIR CONDITIONING. Added value includes TITLED HEATED UNDERGROUND PARKING. Located close to shopping, transit, and walking trails.

Built in 2008

Essential Information

MLS® #	E4461109
Price	\$229,900
Bedrooms	2
Bathrooms	2.00
Full Baths	2
Square Footage	1,061
Acres	0.00



Year Built	2008
Type	Condo / Townhouse
Sub-Type	Lowrise Apartment
Style	Single Level Apartment
Status	Active

Community Information

Address	305 14608 125 Street
Area	Edmonton
Subdivision	Baranow
City	Edmonton
County	ALBERTA
Province	AB
Postal Code	T5X 0B5

Amenities

Amenities	Air Conditioner, Ceiling 9 ft., Deck, Parking-Plug-Ins, Parking-Visitor, Secured Parking, Security Door, Sprinkler System-Fire, Storage-In-Suite, Vinyl Windows, Storage Cage
Parking	Heated, Parkade, Stall, Underground

Interior

Interior Features	ensuite bathroom
Appliances	Air Conditioning-Central, Dishwasher-Built-In, Dryer, Microwave Hood Fan, Refrigerator, Stove-Electric, Washer, Curtains and Blinds
Heating	Forced Air-1, Natural Gas
# of Stories	4
Stories	1
Has Basement	Yes
Basement	None, No Basement

Exterior

Exterior	Wood, Stone, Stucco
Exterior Features	Fenced, Landscaped, Low Maintenance Landscape, Playground Nearby, Public Transportation, Schools, Shopping Nearby
Roof	Asphalt Shingles
Construction	Wood, Stone, Stucco
Foundation	Concrete Perimeter

Additional Information

Date Listed	October 7th, 2025
Days on Market	4
Zoning	Zone 27
Condo Fee	\$542

DATA IS DEEMED RELIABLE BUT IS NOT GUARANTEED ACCURATE BY THE REALTORS® ASSOCIATION OF EDMONTON. COPYRIGHT 2025 BY THE REALTORS® ASSOCIATION OF EDMONTON. ALL RIGHTS RESERVED. Trademarks are owned or controlled by the Canadian Real Estate Association (CREA) and identify real estate professionals who are members of CREA (REALTOR®, REALTORS®) and/or the quality of services they provide (MLS®, Multiple Listing Service®)

Listing information last updated on October 10th, 2025 at 11:17pm MDT