

\$400,000 - 11 Main Boulevard, Sherwood Park

MLS® #E4460145

\$400,000

4 Bedroom, 3.00 Bathroom, 1,489 sqft

Single Family on 0.00 Acres

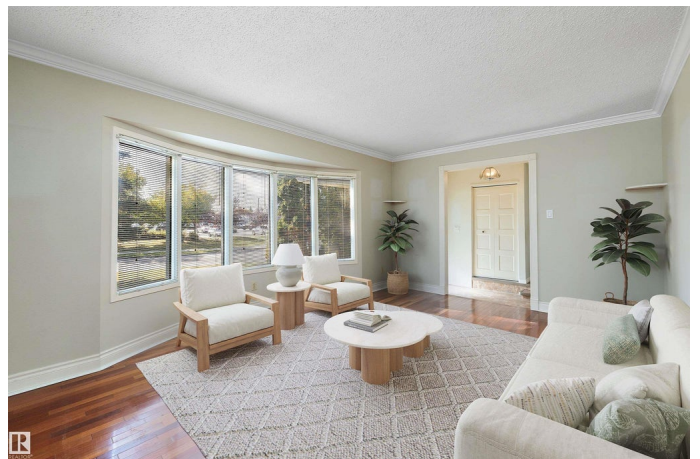
Mills Haven, Sherwood Park, AB

This charming bungalow offers just over 2,800 sq ft of total living space & sits on an attractive lot with no neighbors across the street! Inside, youâ€™ll find classic features like hardwood flooring and crown molding in a formal living & dining room. The kitchen overlooks a breakfast nook with extra built-in cabinetry and a spacious family room with a beautiful stone facing, wood burning fireplace. Two bedrooms, a 4pc bathroom, and the primary bedroom with an updated ensuite complete the main floor. With a long driveway providing ample off-street parking and an oversized double detached garage, thereâ€™s room for all of your vehicles and your guests. This home has amazing bones and incredible potential, priced to accommodate the updates and personal touches of its next owner. Conveniently located within walking distance to schools, shopping, public transit, and more! If youâ€™re seeking a spacious bungalow in a great Sherwood Park location with endless possibilitiesâ€”this is it.

Built in 1975

Essential Information

MLS® #	E4460145
Price	\$400,000
Bedrooms	4



Bathrooms	3.00
Full Baths	3
Square Footage	1,489
Acres	0.00
Year Built	1975
Type	Single Family
Sub-Type	Detached Single Family
Style	Bungalow
Status	Active

Community Information

Address	11 Main Boulevard
Area	Sherwood Park
Subdivision	Mills Haven
City	Sherwood Park
County	ALBERTA
Province	AB
Postal Code	T8A 3T2

Amenities

Amenities	Off Street Parking, Deck, Hot Water Natural Gas
Parking Spaces	5
Parking	Double Garage Detached

Interior

Interior Features	ensuite bathroom
Appliances	Dishwasher-Built-In, Dryer, Fan-Ceiling, Garage Control, Garage Opener, Oven-Built-In, Refrigerator, Stove-Countertop Electric, Washer, Window Coverings
Heating	Forced Air-1, Natural Gas
Fireplace	Yes
Fireplaces	Stone Facing
Stories	2
Has Basement	Yes
Basement	Full, Partially Finished

Exterior

Exterior	Wood, Stone, Vinyl
Exterior Features	Fenced, Flat Site, No Back Lane, Playground Nearby, Private Setting,

Schools, Shopping Nearby, See Remarks

Roof	Asphalt Shingles
Construction	Wood, Stone, Vinyl
Foundation	Concrete Perimeter

School Information

Elementary	Mills Haven Elementary
Middle	Cloverbar Junior High
High	Salisbury Composite High

Additional Information

Date Listed	September 30th, 2025
Days on Market	1
Zoning	Zone 25

DATA IS DEEMED RELIABLE BUT IS NOT GUARANTEED ACCURATE BY THE REALTORS® ASSOCIATION OF EDMONTON. COPYRIGHT 2025 BY THE REALTORS® ASSOCIATION OF EDMONTON. ALL RIGHTS RESERVED.Trademarks are owned or controlled by the Canadian Real Estate Association (CREA) and identify real estate professionals who are members of CREA (REALTOR®, REALTORS®) and/or the quality of services they provide (MLS®, Multiple Listing Service®)

Listing information last updated on October 1st, 2025 at 2:02am MDT