

\$574,900 - 21 Donnelly Terrace, Sherwood Park

MLS® #E4460122

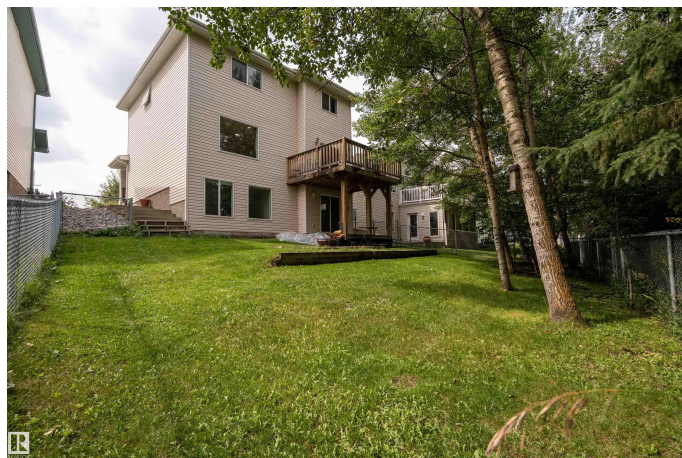
\$574,900

1 Bedroom, 2.50 Bathroom, 2,041 sqft

Single Family on 0.00 Acres

Davidson Creek, Sherwood Park, AB

Welcome to this lovely two-story walkout basement, ideally situated in the highly sought-after community of Davidson Creek. This home has undergone many upgrades, ensuring a modern and inviting living space. You will find stainless steel appliances, new granite countertops, updated flooring, cabinetry, and lighting throughout. The entire home has been refreshed with a new coat of paint and updated baseboards, creating a bright and welcoming atmosphere. We even added a beautiful feature wall in the living room to further enhance the space. The backyard provides an awesome retreat after a busy day, where you can enjoy the sounds of the birds singing amongst the trees, and the sound of creek's water flowing. This home is conveniently located close to schools, parks, walking paths, hospital, and shopping centers, close to Highway 16. Welcome to this lovely two-story home with a walkout basement, ideally located in the highly sought-after community of Davidson Creek. This property has undergone numerous updates.



Built in 1999

Essential Information

MLS® # E4460122

Price \$574,900

Bedrooms	1
Bathrooms	2.50
Full Baths	2
Half Baths	1
Square Footage	2,041
Acres	0.00
Year Built	1999
Type	Single Family
Sub-Type	Detached Single Family
Style	2 Storey
Status	Active

Community Information

Address	21 Donnely Terrace
Area	Sherwood Park
Subdivision	Davidson Creek
City	Sherwood Park
County	ALBERTA
Province	AB
Postal Code	T8H 2B3

Amenities

Amenities	Air Conditioner, Deck, Detectors Smoke, Fire Pit, Front Porch, Hot Water Natural Gas, Walkout Basement, Natural Gas BBQ Hookup
Parking	Double Garage Attached
Is Waterfront	Yes

Interior

Interior Features	ensuite bathroom
Appliances	Air Conditioning-Central, Dishwasher-Built-In, Dryer, Garage Control, Refrigerator, Stove-Electric, Washer, Water Softener
Heating	Forced Air-1, Natural Gas
Stories	3
Has Basement	Yes
Basement	Full, Finished

Exterior

Exterior	Wood, Vinyl
Exterior Features	Backs Onto Park/Trees, Creek, Fenced, Landscaped, Private Setting,

	Schools, Shopping Nearby, Treed Lot
Roof	Asphalt Shingles
Construction	Wood, Vinyl
Foundation	Concrete Perimeter

Additional Information

Date Listed	September 30th, 2025
Days on Market	1
Zoning	Zone 25

DATA IS DEEMED RELIABLE BUT IS NOT GUARANTEED ACCURATE BY THE REALTORS® ASSOCIATION OF EDMONTON. COPYRIGHT 2025 BY THE REALTORS® ASSOCIATION OF EDMONTON. ALL RIGHTS RESERVED. Trademarks are owned or controlled by the Canadian Real Estate Association (CREA) and identify real estate professionals who are members of CREA (REALTOR®, REALTORS®) and/or the quality of services they provide (MLS®, Multiple Listing Service®)

Listing information last updated on October 1st, 2025 at 3:02am MDT