

# **\$679,900 - 38 56220 Rge Road 230, Rural Sturgeon County**

MLS® #E4459957

**\$679,900**

5 Bedroom, 3.00 Bathroom, 1,402 sqft

Rural on 3.90 Acres

Sturgeon Valley Estate, Rural Sturgeon County, AB

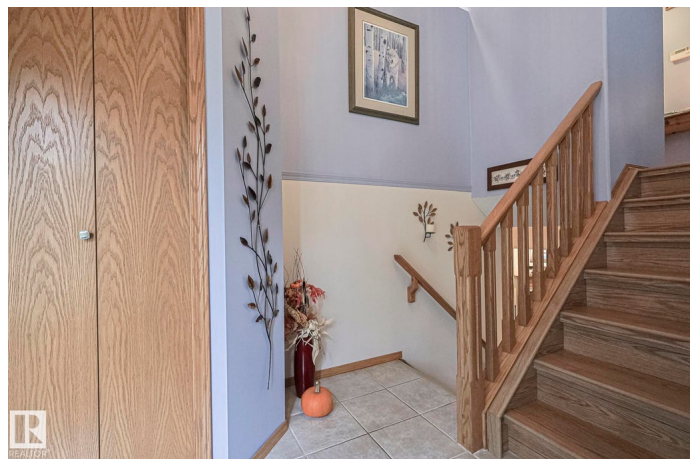
Beautifully maintained & upgraded 1400 sqft + finished basement bi level style home with bonus floor area, featuring 3+2 bedrooms & 3 bathrooms, located on 3.90 beautifully landscaped acres in Sturgeon Valley Estates. Main floor features a large living room, dining room piano window & patio doors with access to sun deck & renovated kitchen with granite counter tops, moveable island, pantry & stainless steel appliances. Primary bedroom features barn doors, walk in closet & 3 piece ensuite. Bedrooms 2 & 3 & the upgraded main bathroom are located on bonus/upper level. Fully finished basement features a family room with gas fireplace, bedrooms 4 & 5, upgraded bathroom & large laundry room. Oversized heated garage is 26'x22'. Outdoors you'll find a multi level deck (dura decking), new hot tub (2023), 2 sheds, play structure, fenced horse pen with lean to, firepit, above ground pool, RV parking, plenty of trees & perennials. Commune with nature in this peaceful and private country residence!

Built in 1997

## **Essential Information**

MLS® #

E4459957



Price	\$679,900
Bedrooms	5
Bathrooms	3.00
Full Baths	3
Square Footage	1,402
Acres	3.90
Year Built	1997
Type	Rural
Sub-Type	Detached Single Family
Style	Bi-Level
Status	Active

### Community Information

Address	38 56220 Rge Road 230
Area	Rural Sturgeon County
Subdivision	Sturgeon Valley Estate
City	Rural Sturgeon County
County	ALBERTA
Province	AB
Postal Code	T0A 1N0

### Amenities

Features	Deck, Detectors Smoke, Hot Tub, No Smoking Home, Pool-Outdoor, R.V. Storage, See Remarks
Parking Spaces	8

### Interior

Interior Features	ensuite bathroom
Heating	Forced Air-1, Natural Gas
Fireplace	Yes
Stories	3
Has Basement	Yes
Basement	Full, Finished

### Exterior

Exterior	Wood
Exterior Features	Fenced, Landscaped, Level Land, Private Setting, Treed Lot, See Remarks
Construction	Wood

Foundation                      Concrete Perimeter

**Additional Information**

Date Listed                      September 29th, 2025

Days on Market                2

Zoning                            Zone 60

DATA IS DEEMED RELIABLE BUT IS NOT GUARANTEED ACCURATE BY THE REALTORS® ASSOCIATION OF EDMONTON. COPYRIGHT 2025 BY THE REALTORS® ASSOCIATION OF EDMONTON. ALL RIGHTS RESERVED.Trademarks are owned or controlled by the Canadian Real Estate Association (CREA) and identify real estate professionals who are members of CREA (REALTOR®, REALTORS®) and/or the quality of services they provide (MLS®, Multiple Listing Service®)

Listing information last updated on October 1st, 2025 at 3:48pm MDT