

## \$599,900 - 53 Creekside Way, Spruce Grove

MLS® #E4456677

**\$599,900**

2 Bedroom, 2.50 Bathroom, 1,896 sqft

Single Family on 0.00 Acres

Aspen Glen, Spruce Grove, AB

Discover a private natural oasis in the backyard: waterfalls, mature trees, bubbling rocks, a covered timber patio, terraced landscaping, and a barrel hot tub create an idyllic retreat. A true masterclass in landscape design. Inside, this fully renovated home boasts a modern kitchen, new floors, doors, black-clad windows (2022), furnace (2019), A/C (2022), shingles (2018), and hot water tank (2019). Luxury features include waterfall granite counters, floor-to-ceiling cabinets, floating bathroom vanities, induction stovetop, upgraded garage door, permanent eaves GEM lighting, heated garage, black stainless appliances, vaulted ceilings in the bonus room, and luxury vinyl floors throughout every level. Enjoy a built-in wood-burning fireplace wrapped in stone with a timber mantle. It also features a natural gas backup generator. A once 3rd bedroom upstairs was converted into large luxury laundry room. Centrally located in sought-after area, next to the city's largest forested walking trail system.

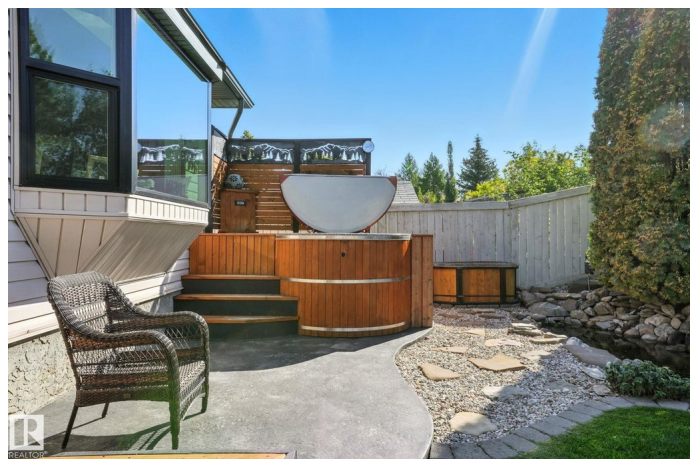
Built in 1998

### Essential Information

MLS® # E4456677

Price \$599,900

Bedrooms 2



Bathrooms	2.50
Full Baths	2
Half Baths	1
Square Footage	1,896
Acres	0.00
Year Built	1998
Type	Single Family
Sub-Type	Detached Single Family
Style	2 Storey
Status	Active

### Community Information

Address	53 Creekside Way
Area	Spruce Grove
Subdivision	Aspen Glen
City	Spruce Grove
County	ALBERTA
Province	AB
Postal Code	T7X 4A2

### Amenities

Amenities	Air Conditioner
Parking	Double Garage Attached, Heated

### Interior

Interior Features	ensuite bathroom
Appliances	Air Conditioning-Central, Dishwasher-Built-In, Dryer, Microwave Hood Fan, Refrigerator, Washer, Window Coverings, Hot Tub
Heating	Forced Air-1, Natural Gas
Fireplace	Yes
Fireplaces	Brick Facing, Insert
Stories	3
Has Basement	Yes
Basement	Full, Finished

### Exterior

Exterior	Wood, Vinyl
Exterior Features	Fenced, Landscaped, No Back Lane, Playground Nearby, Private Setting

Roof	Asphalt Shingles
Construction	Wood, Vinyl
Foundation	Concrete Perimeter

**Additional Information**

Date Listed	September 8th, 2025
Days on Market	1
Zoning	Zone 91

DATA IS DEEMED RELIABLE BUT IS NOT GUARANTEED ACCURATE BY THE REALTORS® ASSOCIATION OF EDMONTON. COPYRIGHT 2025 BY THE REALTORS® ASSOCIATION OF EDMONTON. ALL RIGHTS RESERVED.Trademarks are owned or controlled by the Canadian Real Estate Association (CREA) and identify real estate professionals who are members of CREA (REALTOR®, REALTORS®) and/or the quality of services they provide (MLS®, Multiple Listing Service®)

Listing information last updated on September 9th, 2025 at 7:17am MDT