

\$369,900 - 7418 Twp Road 510, Rural Parkland County

MLS® #E4456589

\$369,900

3 Bedroom, 2.00 Bathroom, 1,205 sqft

Rural on 10.01 Acres

None, Rural Parkland County, AB

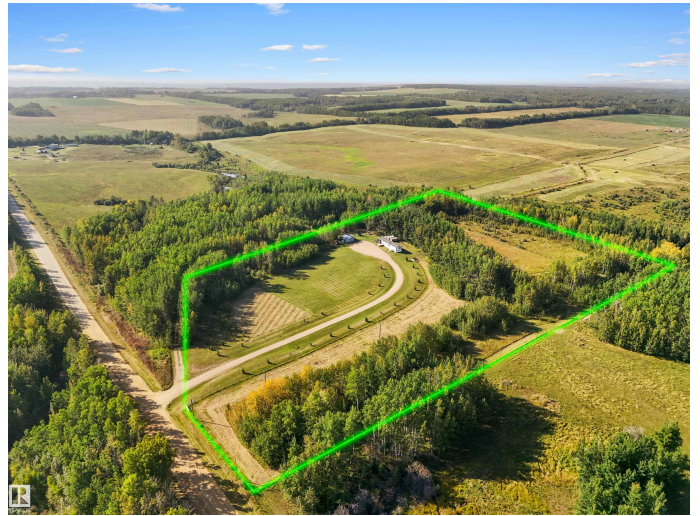
Situated on 10.01 beautiful acres approximately 10 minutes from Drayton Valley, this property is set up for horses or livestock with cross fencing, page wire, shelters, and other outbuildings. The 2004 built, 1,205 sq ft, 3 bed, 2 bath home is ideally placed on the property with a mix of open space, trees and rolling hills. Inside, the open layout connects the kitchen, dining, and living areas, creating a bright and welcoming space. The kitchen offers plenty of storage with lots of cabinets and a handy corner pantry. The primary bedroom features a walk-in closet and a full 4-pc ensuite. On the other side of the home are 2 more bedrooms and a second 4-pc bath. There's also a separate laundry and storage room for added convenience. A great opportunity for anyone wanting space, comfort, and quiet country living. All outbuildings stay with the property. *Outline on drone photo is approximate*. Don't miss your opportunity to make this peaceful acreage your own! Pre-inspection available to serious buyers!

Built in 2004

Essential Information

MLS® # E4456589

Price \$369,900



Bedrooms	3
Bathrooms	2.00
Full Baths	2
Square Footage	1,205
Acres	10.01
Year Built	2004
Type	Rural
Sub-Type	Detached Single Family
Style	Bungalow
Status	Active

Community Information

Address	7418 Twp Road 510
Area	Rural Parkland County
Subdivision	None
City	Rural Parkland County
County	ALBERTA
Province	AB
Postal Code	T0C 1Z0

Amenities

Features	Deck, See Remarks
----------	-------------------

Interior

Interior Features	ensuite bathroom
Heating	Forced Air-1, Natural Gas
Stories	1
Has Basement	Yes
Basement	None, No Basement

Exterior

Exterior	Prefab
Exterior Features	Fenced, Hillside, Landscaped, No Back Lane, Private Setting, See Remarks
Construction	Prefab
Foundation	Piling

Additional Information

Date Listed	September 6th, 2025
-------------	---------------------

Days on Market 2

Zoning Zone 90

DATA IS DEEMED RELIABLE BUT IS NOT GUARANTEED ACCURATE BY THE REALTORS® ASSOCIATION OF EDMONTON. COPYRIGHT 2025 BY THE REALTORS® ASSOCIATION OF EDMONTON. ALL RIGHTS RESERVED. Trademarks are owned or controlled by the Canadian Real Estate Association (CREA) and identify real estate professionals who are members of CREA (REALTOR®, REALTORS®) and/or the quality of services they provide (MLS®, Multiple Listing Service®)

Listing information last updated on September 8th, 2025 at 10:17am MDT