

Courtesy Of Janeen Tinker Of Real Broker

\$259,900 - 2503 10410 102 Avenue, Edmonton

MLS® #E4456093

\$259,900

1 Bedroom, 1.00 Bathroom, 621 sqft

Condo / Townhouse on 0.00 Acres

Downtown (Edmonton), Edmonton, AB

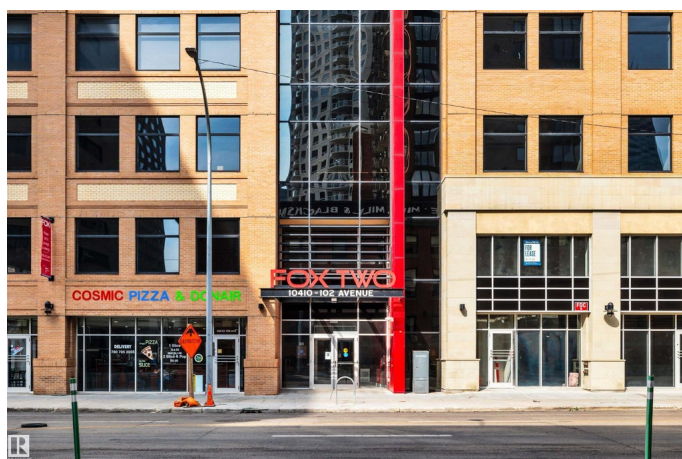
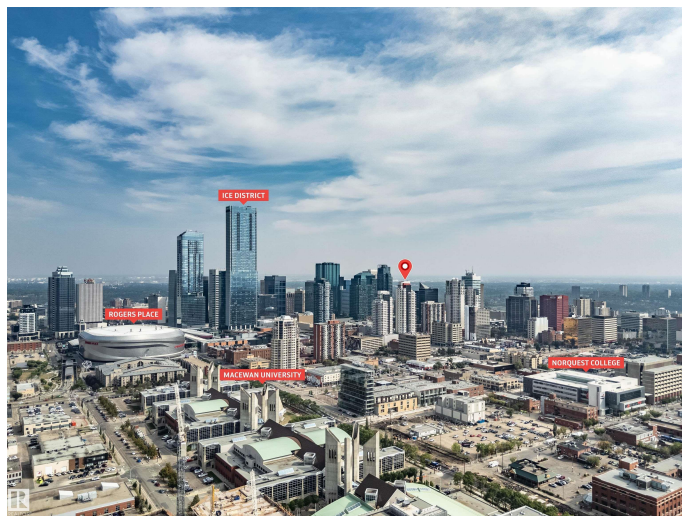
Welcome to the 25th floor of FOX Two. Experience refined urban living in the heart of Edmonton's Ice District. This modern 1-bedroom PLUS DEN condo features huge south-facing windows with sweeping skyline views, A/C, 9' ceilings and a modern kitchen with quartz countertops, stainless steel appliances, and a breakfast bar for four. The well-designed bedroom includes a walk-through closet with access to the 4-piece bathroom. Den just off the entry way makes for the perfect office space. Enjoy the large south-facing, covered balcony with gas hookup—perfect for a BBQ or patio heater. Includes IN-SUITE laundry, titled, heated underground parking and Bluebox package locker system. Steps from all the best downtown has to offer: YMCA, entertainment, festivals, farmers markets, dining, shopping, and schools. Walkable to the LRT (incl. new Valley Line), Beaver Hills House Park, Michael Phair Park, and the upcoming Warehouse Park. Your peaceful sanctuary in the center of it all.

Built in 2017

Essential Information

MLS® # E4456093

Price \$259,900



Bedrooms	1
Bathrooms	1.00
Full Baths	1
Square Footage	621
Acres	0.00
Year Built	2017
Type	Condo / Townhouse
Sub-Type	Apartment High Rise
Style	Single Level Apartment
Status	Active

Community Information

Address	2503 10410 102 Avenue
Area	Edmonton
Subdivision	Downtown (Edmonton)
City	Edmonton
County	ALBERTA
Province	AB
Postal Code	T5J 0E9

Amenities

Amenities	Air Conditioner, Ceiling 9 ft., See Remarks, Natural Gas BBQ Hookup
Parking	Underground

Interior

Interior Features	ensuite bathroom
Appliances	Air Conditioning-Central, Dishwasher-Built-In, Dryer, Microwave Hood Fan, Refrigerator, Stove-Electric, Washer, Window Coverings
Heating	Baseboard, Natural Gas
# of Stories	33
Stories	1
Has Basement	Yes
Basement	None, No Basement

Exterior

Exterior	Concrete, Brick, Stucco
Exterior Features	Golf Nearby, Public Swimming Pool, Public Transportation, Schools, Shopping Nearby, View City, See Remarks
Roof	SBS Roofing System

Construction	Concrete, Brick, Stucco
Foundation	Concrete Perimeter

Additional Information

Date Listed	September 4th, 2025
Days on Market	1
Zoning	Zone 12
Condo Fee	\$327

DATA IS DEEMED RELIABLE BUT IS NOT GUARANTEED ACCURATE BY THE REALTORS® ASSOCIATION OF EDMONTON. COPYRIGHT 2025 BY THE REALTORS® ASSOCIATION OF EDMONTON. ALL RIGHTS RESERVED.Trademarks are owned or controlled by the Canadian Real Estate Association (CREA) and identify real estate professionals who are members of CREA (REALTOR®, REALTORS®) and/or the quality of services they provide (MLS®, Multiple Listing Service®)

Listing information last updated on September 5th, 2025 at 11:33am MDT