

## \$499,900 - 8910 162 Street, Edmonton

MLS® #E4455990

**\$499,900**

4 Bedroom, 2.00 Bathroom, 1,058 sqft

Single Family on 0.00 Acres

Meadowlark Park (Edmonton), Edmonton, AB

Immaculate & fully renovated Meadowlark Park home with 4 spacious levels of living! Walking distance to parks, schools, transit & shopping. Features include maple hardwood floors, crown molding, modern colours & updated windows. The kitchen shines with Kitchen Craft cabinetry, granite countertops, tiled flooring & access to the backyard. Upstairs offers 3 bedrooms & a stylish 5-pc bath w/double sinks. The lower level impresses with a large family room with a beautiful brick fireplace, heated office, 3-pc bath & separate backyard entrance. Basement includes a finished bedroom with pot lighting, laundry & storage. Updates: siding, stonework & new concrete patio (2018), shingles (2022), central A/C (2023), electrical panel, pot lights & basement renos (2024), plus all new LG & Bosch appliances (2022-2025). Outside you'll enjoy a large west-facing backyard, oversized double garage with loads of storage! A move-in ready home with thoughtful upgrades in a fantastic location!

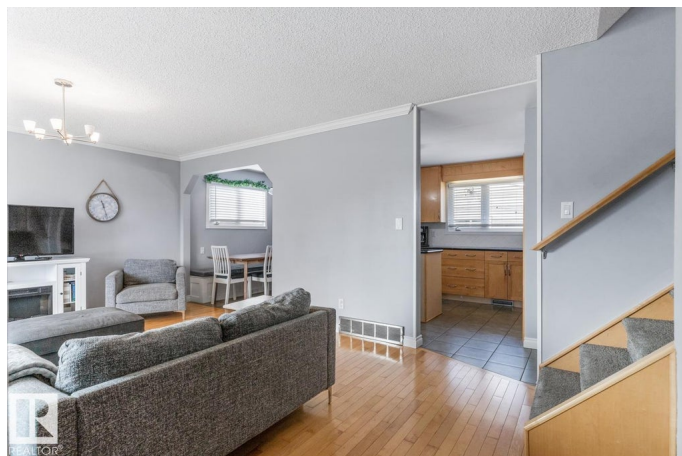
Built in 1964

### Essential Information

MLS® # E4455990

Price \$499,900

Bedrooms 4



Bathrooms	2.00
Full Baths	2
Square Footage	1,058
Acres	0.00
Year Built	1964
Type	Single Family
Sub-Type	Detached Single Family
Style	4 Level Split
Status	Active

### Community Information

Address	8910 162 Street
Area	Edmonton
Subdivision	Meadowlark Park (Edmonton)
City	Edmonton
County	ALBERTA
Province	AB
Postal Code	T5R 2M4

### Amenities

Amenities	On Street Parking, Air Conditioner, Vinyl Windows
Parking	Double Garage Detached, Over Sized

### Interior

Appliances	Dishwasher-Built-In, Dryer, Garage Control, Garage Opener, Refrigerator, Stove-Electric, Washer, Window Coverings
Heating	Forced Air-1, Natural Gas
Fireplace	Yes
Fireplaces	Masonry
Stories	4
Has Basement	Yes
Basement	Full, Finished

### Exterior

Exterior	Wood, Brick, Vinyl
Exterior Features	Fenced, Flat Site, Landscaped, Playground Nearby, Public Swimming Pool, Public Transportation, Shopping Nearby
Roof	Asphalt Shingles
Construction	Wood, Brick, Vinyl

Foundation                      Concrete Perimeter

**Additional Information**

Date Listed                      September 4th, 2025

Days on Market                3

Zoning                            Zone 22

DATA IS DEEMED RELIABLE BUT IS NOT GUARANTEED ACCURATE BY THE REALTORS® ASSOCIATION OF EDMONTON. COPYRIGHT 2025 BY THE REALTORS® ASSOCIATION OF EDMONTON. ALL RIGHTS RESERVED.Trademarks are owned or controlled by the Canadian Real Estate Association (CREA) and identify real estate professionals who are members of CREA (REALTOR®, REALTORS®) and/or the quality of services they provide (MLS®, Multiple Listing Service®)

Listing information last updated on September 7th, 2025 at 4:47pm MDT