

## \$950,000 - 8441 118 Street, Edmonton

MLS® #E4455003

**\$950,000**

3 Bedroom, 2.00 Bathroom, 1,711 sqft

Single Family on 0.00 Acres

Windsor Park (Edmonton), Edmonton, AB

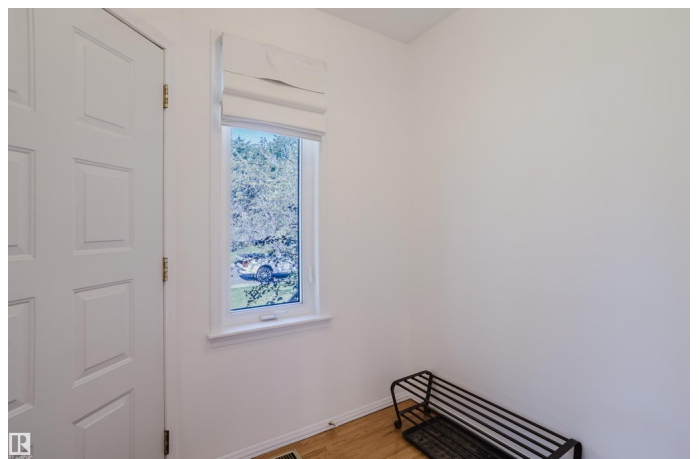
Welcome to 8441 118 Street in Windsor Park! This charming 3-bedroom, 2-bath home blends 1953 character with modern upgrades. Inside you'll find hardwood floors throughout, a bright living area, and a fully finished basement perfect for a rec room, office, or gym. Updates include a newer furnace, hot water tank, windows, hardy board, roof, also enjoy a double detached garage with alley access for parking and storage. Set in prestigious Windsor Park, this home offers unbeatable lifestyle perks. Walk or bike the River Valley trails, relax in Hawrelak Park, or stay active at the Kinsmen Sports Centre. Families will love the proximity to Windsor Park School and top-rated programs, while professionals will appreciate quick access to the University of Alberta, U of A Hospital, Whyte Avenue caf  s, and downtown Edmonton. With its tree-lined streets, strong community feel, and central location, Windsor Park is one of Edmonton's most sought-after neighbourhoods  perfect for families, professionals, or investors.

Built in 1953

### Essential Information

MLS® # E4455003

Price \$950,000



Bedrooms	3
Bathrooms	2.00
Full Baths	2
Square Footage	1,711
Acres	0.00
Year Built	1953
Type	Single Family
Sub-Type	Detached Single Family
Style	Bungalow
Status	Active

### Community Information

Address	8441 118 Street
Area	Edmonton
Subdivision	Windsor Park (Edmonton)
City	Edmonton
County	ALBERTA
Province	AB
Postal Code	T6G 1T2

### Amenities

Amenities	Off Street Parking, On Street Parking, Deck, Detectors Smoke, Hot Water Natural Gas, No Animal Home, Vinyl Windows
Parking	Double Garage Detached, Parking Pad Cement/Paved

### Interior

Appliances	Dishwasher-Built-In, Dryer, Garage Control, Garage Opener, Refrigerator, Stove-Gas, Washer, Window Coverings
Heating	Forced Air-2, Natural Gas
Stories	2
Has Basement	Yes
Basement	Full, Finished

### Exterior

Exterior	Wood, Hardie Board Siding
Exterior Features	Back Lane, Fenced, Fruit Trees/Shrubs, Landscaped, Schools, Shopping Nearby
Roof	Asphalt Shingles
Construction	Wood, Hardie Board Siding

Foundation                      Concrete Perimeter

**Additional Information**

Date Listed                      August 28th, 2025

Days on Market                1

Zoning                            Zone 15

DATA IS DEEMED RELIABLE BUT IS NOT GUARANTEED ACCURATE BY THE REALTORS® ASSOCIATION OF EDMONTON. COPYRIGHT 2025 BY THE REALTORS® ASSOCIATION OF EDMONTON. ALL RIGHTS RESERVED.Trademarks are owned or controlled by the Canadian Real Estate Association (CREA) and identify real estate professionals who are members of CREA (REALTOR®, REALTORS®) and/or the quality of services they provide (MLS®, Multiple Listing Service®)

Listing information last updated on August 29th, 2025 at 6:17am MDT