

\$365,000 - 1628 33a St, Edmonton

MLS® #E4454993

\$365,000

3 Bedroom, 2.50 Bathroom, 1,481 sqft
Condo / Townhouse on 0.00 Acres

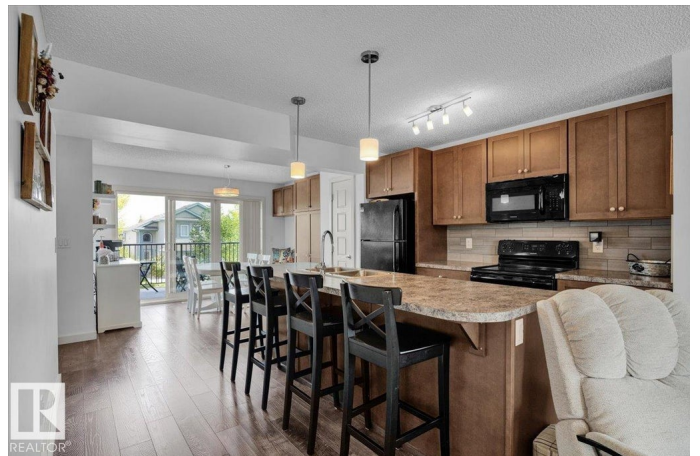
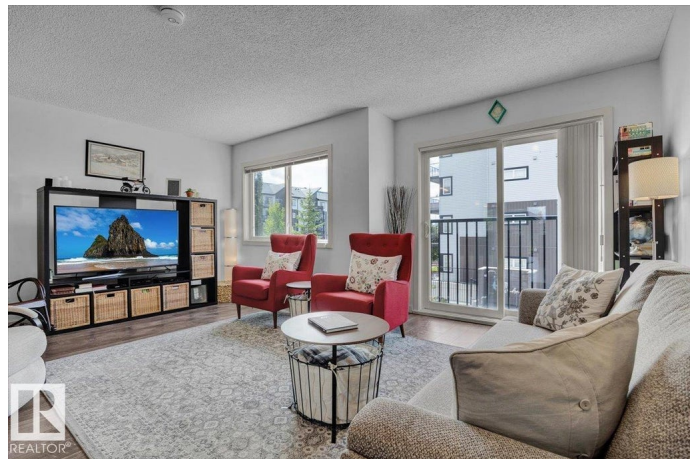
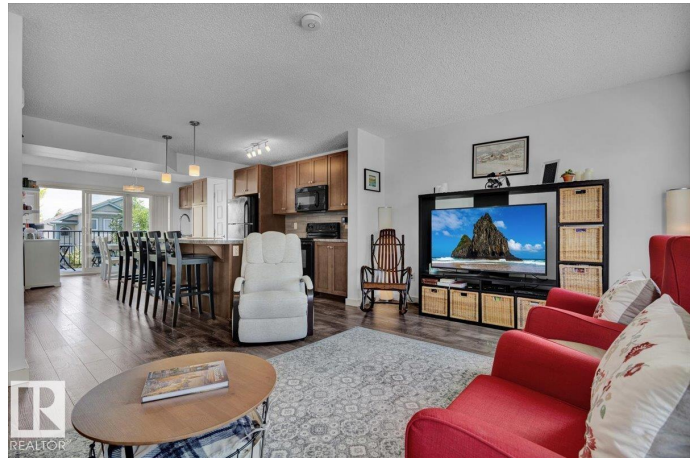
Laurel, Edmonton, AB

Laurel is a highly sought-after South East Community; it has impeccable School options and it's very close to the Henday and Sherwood Park. There is an abundance of green-space all around, plus countless shopping and dining amenities close-by at South Edmonton Common! Enjoy 3 finished floors of unlimited potential with this modern and inviting Townhouse! Work from Home? â€” no problem! There is a beautiful Home Office, just off of the Attached Double Car Garage. The Office is private, tranquil and on its own level from the rest of the house; perfect for privacy and noise reduction while working. The show-stopping Kitchen is bright, gorgeous and has a ton of extra cabinets next to the dining room, that match the kitchen cabinets; ideal for someone who loves to cook and entertain! Upstairs there are 3 generously sized bedrooms, plus a sleek newer washer and dryer; on the same floor for added convenience! With a low maintenance yard; this is the perfect Home for an stress-free, peaceful lifestyle!

Built in 2015

Essential Information

MLS® #	E4454993
Price	\$365,000



Bedrooms	3
Bathrooms	2.50
Full Baths	2
Half Baths	1
Square Footage	1,481
Acres	0.00
Year Built	2015
Type	Condo / Townhouse
Sub-Type	Townhouse
Style	3 Storey
Status	Active

Community Information

Address	1628 33a St
Area	Edmonton
Subdivision	Laurel
City	Edmonton
County	ALBERTA
Province	AB
Postal Code	T6T 0Y1

Amenities

Amenities	On Street Parking, Carbon Monoxide Detectors, Detectors Smoke, No Animal Home, No Smoking Home, Parking-Visitor
Parking Spaces	2
Parking	Double Garage Attached

Interior

Interior Features	ensuite bathroom
Appliances	Dishwasher-Built-In, Dryer, Microwave Hood Fan, Refrigerator, Stove-Electric, Washer
Heating	Forced Air-1, Natural Gas
Stories	3
Has Basement	Yes
Basement	None, No Basement

Exterior

Exterior	Wood, Stone, Vinyl
Exterior Features	Golf Nearby, Landscaped, Park/Reserve, Playground Nearby, Public

Swimming Pool, Public Transportation, Schools, Shopping Nearby

Roof	Asphalt Shingles
Construction	Wood, Stone, Vinyl
Foundation	Concrete Perimeter

School Information

Elementary	Svend Hansen School
Middle	Svend Hansen School
High	Elder DR. Francis Whiskey

Additional Information

Date Listed	August 28th, 2025
Days on Market	1
Zoning	Zone 30
Condo Fee	\$198

DATA IS DEEMED RELIABLE BUT IS NOT GUARANTEED ACCURATE BY THE REALTORS® ASSOCIATION OF EDMONTON. COPYRIGHT 2025 BY THE REALTORS® ASSOCIATION OF EDMONTON. ALL RIGHTS RESERVED. Trademarks are owned or controlled by the Canadian Real Estate Association (CREA) and identify real estate professionals who are members of CREA (REALTOR®, REALTORS®) and/or the quality of services they provide (MLS®, Multiple Listing Service®)

Listing information last updated on August 28th, 2025 at 10:02pm MDT