

\$339,900 - 37 12815 Cumberland Road, Edmonton

MLS® #E4453869

\$339,900

2 Bedroom, 2.50 Bathroom, 1,415 sqft

Condo / Townhouse on 0.00 Acres

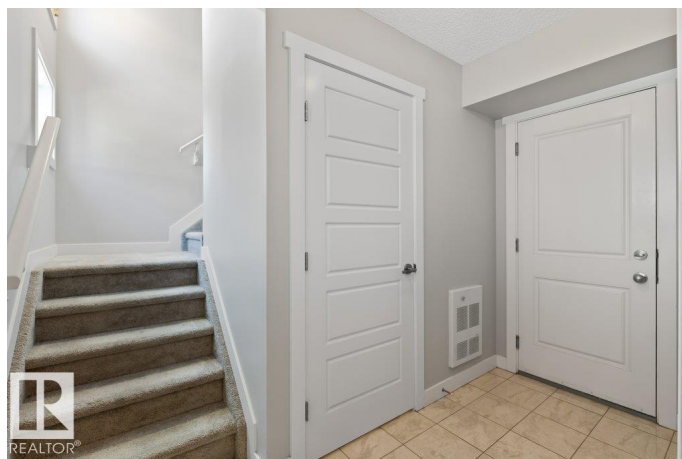
Pembina, Edmonton, AB

Beautiful and well-designed end unit 3-storey home featuring 2 master bedrooms, each with its own ensuite. The entry-level offers a spacious foyer, a private office, mechanical room, and access to the double attached garage. The bright and open second floor features a modern white U-shaped kitchen with quartz countertops, stainless steel appliances, and a large walk-in pantry. The living room opens to a vinyl and aluminum finished deck, perfect for relaxing. A convenient powder room completes this level. Upstairs, one master includes two closets and a full ensuite, while the second has a walk-in closet and ensuite. Enjoy the convenience of upper-floor laundry. Quality finishes throughout including laminate, tile, and carpet flooring. Central A/C for year-round comfort. Visitor parking available. Close to parks, schools, shopping, and easy access to Anthony Henday and Yellowhead Trail.

Built in 2017

Essential Information

MLS® #	E4453869
Price	\$339,900
Bedrooms	2
Bathrooms	2.50
Full Baths	2



Half Baths	1
Square Footage	1,415
Acres	0.00
Year Built	2017
Type	Condo / Townhouse
Sub-Type	Townhouse
Style	3 Storey
Status	Active

Community Information

Address	37 12815 Cumberland Road
Area	Edmonton
Subdivision	Pembina
City	Edmonton
County	ALBERTA
Province	AB
Postal Code	T6V 0M2

Amenities

Amenities	Air Conditioner, Deck, Parking-Extra
Parking	Double Garage Attached

Interior

Interior Features	ensuite bathroom
Appliances	Air Conditioning-Central, Dishwasher-Built-In, Dryer, Garage Control, Garage Opener, Microwave Hood Fan, Refrigerator, Stove-Electric, Washer, TV Wall Mount
Heating	Forced Air-1, Natural Gas
Stories	3
Has Basement	Yes
Basement	None, No Basement

Exterior

Exterior	Wood, Stone, Vinyl
Exterior Features	Flat Site, Fruit Trees/Shrubs, Landscaped, Playground Nearby, Public Transportation, Schools, Shopping Nearby
Roof	Asphalt Shingles
Construction	Wood, Stone, Vinyl
Foundation	Concrete Perimeter

Additional Information

Date Listed	August 20th, 2025
Zoning	Zone 27
Condo Fee	\$239

DATA IS DEEMED RELIABLE BUT IS NOT GUARANTEED ACCURATE BY THE REALTORS® ASSOCIATION OF EDMONTON. COPYRIGHT 2025 BY THE REALTORS® ASSOCIATION OF EDMONTON. ALL RIGHTS RESERVED.Trademarks are owned or controlled by the Canadian Real Estate Association (CREA) and identify real estate professionals who are members of CREA (REALTOR®, REALTORS®) and/or the quality of services they provide (MLS®, Multiple Listing Service®)

Listing information last updated on August 20th, 2025 at 7:17pm MDT