

## \$699,900 - 9508 148 Street, Edmonton

MLS® #E4453477

**\$699,900**

5 Bedroom, 2.00 Bathroom, 1,201 sqft  
Single Family on 0.00 Acres

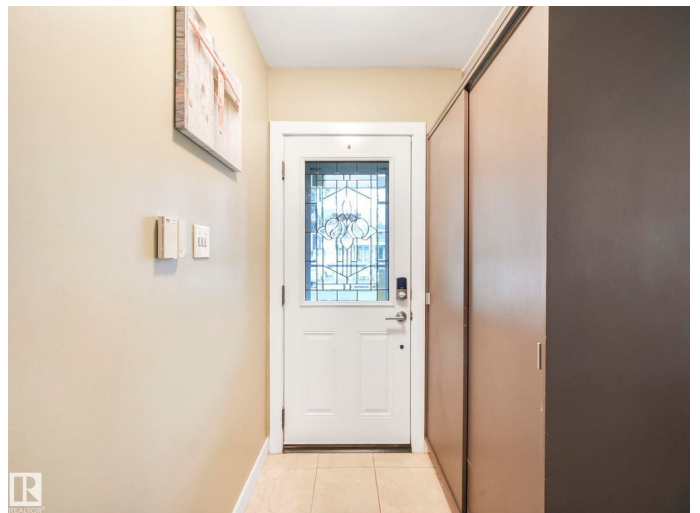
Crestwood, Edmonton, AB

Nestled in one of Edmonton's most desirable communities, Crestwood, this 1200 sq ft bungalow sits on a spacious 640 sq m lot and is bursting with potential. With solid construction featuring 3 main-floor bedrooms plus 2 basement bedrooms, bathrooms on both levels, generous living, dining, rec spaces, and numerous updates make this home ideal for family living. The beautifully landscaped backyard surrounds the double oversized garage. Close to parks, community leagues, playgrounds, reputable elementary and junior high schools, ravines, shopping, restaurants and minutes to downtown. Move in and make it your own. Don't miss this chance to live in the sought-after Crestwood!

Built in 1955

### Essential Information

MLS® #	E4453477
Price	\$699,900
Bedrooms	5
Bathrooms	2.00
Full Baths	2
Square Footage	1,201
Acres	0.00
Year Built	1955
Type	Single Family



Sub-Type	Detached Single Family
Style	Bungalow
Status	Active

### **Community Information**

Address	9508 148 Street
Area	Edmonton
Subdivision	Crestwood
City	Edmonton
County	ALBERTA
Province	AB
Postal Code	T5N 3E4

### **Amenities**

Amenities	Air Conditioner, Detectors Smoke, No Animal Home, No Smoking Home
Parking	Double Garage Detached, Over Sized

### **Interior**

Appliances	Air Conditioning-Central, Dishwasher-Built-In, Dryer, Garage Opener, Hood Fan, Refrigerator, Storage Shed, Stove-Electric, Washer, See Remarks
Heating	Forced Air-1, Natural Gas
Fireplace	Yes
Fireplaces	Brick Facing
Stories	2
Has Basement	Yes
Basement	Full, Finished

### **Exterior**

Exterior	Wood
Exterior Features	Back Lane, Fenced, Landscaped, Playground Nearby, Public Transportation, Schools, Shopping Nearby
Roof	Asphalt Shingles
Construction	Wood
Foundation	Concrete Perimeter

### **School Information**

Elementary	Crestwood, St. Paul
High	Ross Shepherd

## Additional Information

Date Listed August 18th, 2025

Days on Market 2

Zoning Zone 10

DATA IS DEEMED RELIABLE BUT IS NOT GUARANTEED ACCURATE BY THE REALTORS® ASSOCIATION OF EDMONTON. COPYRIGHT 2025 BY THE REALTORS® ASSOCIATION OF EDMONTON. ALL RIGHTS RESERVED. Trademarks are owned or controlled by the Canadian Real Estate Association (CREA) and identify real estate professionals who are members of CREA (REALTOR®, REALTORS®) and/or the quality of services they provide (MLS®, Multiple Listing Service®)

Listing information last updated on August 20th, 2025 at 6:17pm MDT