

## **\$665,000 - 66 Edgefield Way, St. Albert**

MLS® #E4453294

**\$665,000**

4 Bedroom, 2.50 Bathroom, 2,273 sqft

Single Family on 0.00 Acres

Erin Ridge North, St. Albert, AB

**MOVE-IN READY in ERIN RIDGE NORTH!**

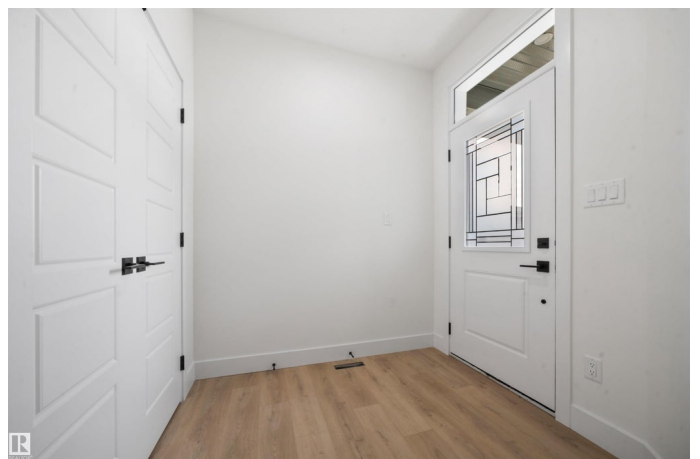
This stunning 2,272 SQ FT home offers 4 BEDROOMS, 2.5 BATHS, and a BRIGHT OPEN-CONCEPT LAYOUT with soaring OPEN-TO-BELOW CEILINGS and expansive windows that fill the home with natural light. The modern KITCHEN features a stylish backsplash, oversized island, and a WALK-THROUGH PANTRY conveniently connected to the mudroom. Relax by the FIREPLACE in the main living room or the one in the upstairs BONUS ROOM, perfect for family nights. The PRIMARY SUITE impresses with a WALK-IN CLOSET and a SPA-INSPIRED ENSUITE offering double sinks, a deep soaker tub, and a tiled glass shower. A separate SIDE ENTRANCE provides excellent potential for a future LEGAL SUITE, making this home both functional and investment-friendly. Completed with APPLIANCES, REAR DECK, UPGRADED LIGHTING, HARDWOOD FLOORING, and a DOUBLE ATTACHED GARAGE. Located near highly rated schools, parks, scenic trails, shopping, and dining. IMMEDIATE POSSESSION AVAILABLE!

Built in 2025

### **Essential Information**

MLS® #

E4453294



Price	\$665,000
Bedrooms	4
Bathrooms	2.50
Full Baths	2
Half Baths	1
Square Footage	2,273
Acres	0.00
Year Built	2025
Type	Single Family
Sub-Type	Detached Single Family
Style	2 Storey
Status	Active

### Community Information

Address	66 Edgefield Way
Area	St. Albert
Subdivision	Erin Ridge North
City	St. Albert
County	ALBERTA
Province	AB
Postal Code	T8N 7Z9

### Amenities

Amenities	On Street Parking, Carbon Monoxide Detectors, Ceiling 9 ft., Deck, Hot Water Natural Gas, No Animal Home, No Smoking Home, Vacuum System-Roughed-In, HRV System, Natural Gas BBQ Hookup, 9 ft. Basement Ceiling
Parking	Double Garage Attached

### Interior

Interior Features	ensuite bathroom
Appliances	Dishwasher-Built-In, Dryer, Garage Control, Garage Opener, Hood Fan, Refrigerator, Stove-Electric, Washer, Window Coverings, See Remarks
Heating	Forced Air-1, Natural Gas
Fireplace	Yes
Fireplaces	Insert
Stories	2
Has Basement	Yes
Basement	Full, Unfinished

Exterior

Exterior	Wood, Vinyl
Exterior Features	Backs Onto Park/Trees, G Nearby, Public Transportation
Roof	Asphalt Shingles
Construction	Wood, Vinyl
Foundation	Concrete Perimeter



Additional Information

Date Listed	August 15th, 2025
Days on Market	1
Zoning	Zone 24

DATA IS DEEMED RELIABLE BUT IS NOT GUARANTEED ACCURATE BY THE REALTORS® ASSOCIATION OF EDMONTON. COPYRIGHT 2025 BY THE REALTORS® ASSOCIATION OF EDMONTON. ALL RIGHTS RESERVED.Trademarks are owned or controlled by the Canadian Real Estate Association (CREA) and identify real estate professionals who are members of CREA (REALTOR®, REALTORS®) and/or the quality of services they provide (MLS®, Multiple Listing Service®)

Listing information last updated on August 16th, 2025 at 2:32pm MDT