

\$229,900 - 402 9020 Jasper Avenue, Edmonton

MLS® #E4453135

\$229,900

1 Bedroom, 2.00 Bathroom, 1,071 sqft

Condo / Townhouse on 0.00 Acres

Boyle Street, Edmonton, AB

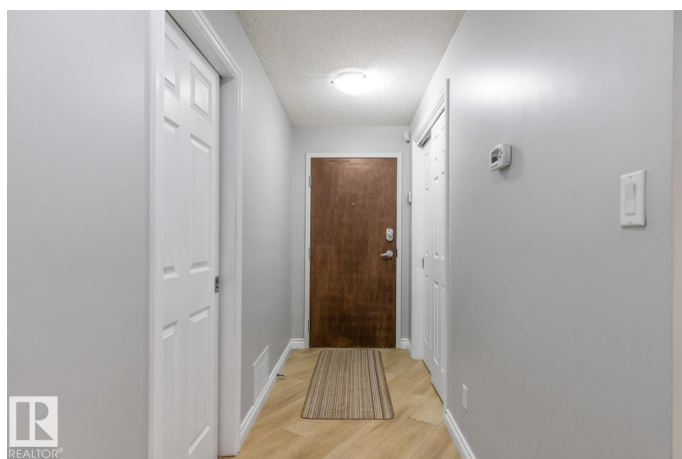
Welcome to Jasper Properties, where luxury meets convenience. This spacious 1 bedroom + den/second bedroom condo offers 2 full bathrooms, an open concept layout, and modern finishes throughout. Recent updates include fresh paint, new flooring, and triple-pane windows for comfort and efficiency! The primary suite features a private ensuite, while the den provides flexible space for guests, a home office, or a second bedroom. Step out to your southeast-facing covered deckâ€”perfect for morning coffee, evening stargazing, or summer BBQs. Enjoy secure underground parking, a top-tier security system, and fantastic building amenities: a fitness center, social room, and a private courtyard with gated entry and a peaceful water feature. All this in a prime location close to dining, shopping, the River Valley, and Edmontonâ€™s vibrant downtown entertainment scene. Experience comfort, security, and style in this exceptional concrete built executive condo ready for you to call home!

Built in 2005

Essential Information

MLS® # E4453135

Price \$229,900



Bedrooms	1
Bathrooms	2.00
Full Baths	2
Square Footage	1,071
Acres	0.00
Year Built	2005
Type	Condo / Townhouse
Sub-Type	Apartment High Rise
Style	Single Level Apartment
Status	Active

Community Information

Address	402 9020 Jasper Avenue
Area	Edmonton
Subdivision	Boyle Street
City	Edmonton
County	ALBERTA
Province	AB
Postal Code	T5H 3S8

Amenities

Amenities	Ceiling 9 ft., Recreation Room/Centre, Secured Parking, Social Rooms, Vinyl Windows
Parking	Underground

Interior

Interior Features	ensuite bathroom
Appliances	Dishwasher-Built-In, Dryer, Refrigerator, Stove-Electric, Washer, Window Coverings
Heating	Forced Air-1, Natural Gas
# of Stories	21
Stories	1
Has Basement	Yes
Basement	See Remarks

Exterior

Exterior	Concrete, Brick
Exterior Features	Environmental Reserve, Fenced, Landscaped, Playground Nearby, Public Swimming Pool, Public Transportation, River Valley View,

	Shopping Nearby
Roof	Metal
Construction	Concrete, Brick
Foundation	Concrete Perimeter

Additional Information

Date Listed	August 14th, 2025
Days on Market	2
Zoning	Zone 13
Condo Fee	\$725

DATA IS DEEMED RELIABLE BUT IS NOT GUARANTEED ACCURATE BY THE REALTORS® ASSOCIATION OF EDMONTON. COPYRIGHT 2025 BY THE REALTORS® ASSOCIATION OF EDMONTON. ALL RIGHTS RESERVED. Trademarks are owned or controlled by the Canadian Real Estate Association (CREA) and identify real estate professionals who are members of CREA (REALTOR®, REALTORS®) and/or the quality of services they provide (MLS®, Multiple Listing Service®)

Listing information last updated on August 16th, 2025 at 2:02pm MDT