

\$399,900 - 11 6020 Twp Road 534, Rural Parkland County

MLS® #E4451385

\$399,900

2 Bedroom, 1.00 Bathroom, 893 sqft

Rural on 0.48 Acres

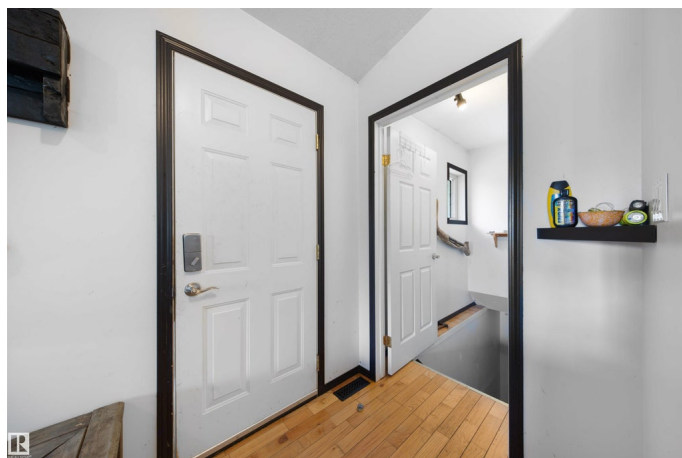
Isle Cove, Rural Parkland County, AB

Nestled just steps from the lake in Isle Cove, this beautiful home offers peaceful living. Inside, youâ€™ll find a bright open-concept layout, and a cozy living area perfect for relaxing after a day outdoors. Recent upgrades include updated flooring in both bedrooms, freshly painted bathroom, fresh stain on the siding, new railing on the side deck, and a spacious 10x10 two-storey shed built in 2020â€”ideal for storage or hobbies. The double attached garage below adds convenience and extra space. Enjoy lake access only a 1-minute walk away (with dock and posts included), amazing fishing, and abundant wildlife. Whether youâ€™re seeking a year-round home or weekend retreat, this Isle Cove gem has it all.

Built in 2001

Essential Information

MLS® #	E4451385
Price	\$399,900
Bedrooms	2
Bathrooms	1.00
Full Baths	1
Square Footage	893
Acres	0.48



Year Built	2001
Type	Rural
Sub-Type	Detached Single Family
Style	2 Storey
Status	Active

Community Information

Address	11 6020 Twp Road 534
Area	Rural Parkland County
Subdivision	Isle Cove
City	Rural Parkland County
County	ALBERTA
Province	AB
Postal Code	T0E 0W0

Amenities

Features	Deck, Vaulted Ceiling, Vinyl Windows, See Remarks
----------	---------------------------------------------------

Interior

Heating	Forced Air-1, Natural Gas
Stories	1
Has Basement	Yes
Basement	Partial, Unfinished

Exterior

Exterior	Wood
Exterior Features	Backs Onto Park/Trees, Boating, Lake View, Landscaped, No Through Road, Recreation Use, Sloping Lot
Construction	Wood
Foundation	Concrete Perimeter

Additional Information

Date Listed	August 5th, 2025
Days on Market	2
Zoning	Zone 75

DATA IS DEEMED RELIABLE BUT IS NOT GUARANTEED ACCURATE BY THE REALTORS® ASSOCIATION OF EDMONTON. COPYRIGHT 2025 BY THE REALTORS® ASSOCIATION OF EDMONTON. ALL RIGHTS RESERVED. Trademarks are owned or controlled by the Canadian Real Estate Association (CREA) and identify real estate professionals who are members of CREA (REALTOR®, REALTORS®) and/or the quality of services they provide (MLS®, Multiple Listing Service®)

Listing information last updated on August 7th, 2025 at 5:02pm MDT