

\$489,900 - 8516 7 Avenue, Edmonton

MLS® #E4449667

\$489,900

3 Bedroom, 2.50 Bathroom, 1,778 sqft

Single Family on 0.00 Acres

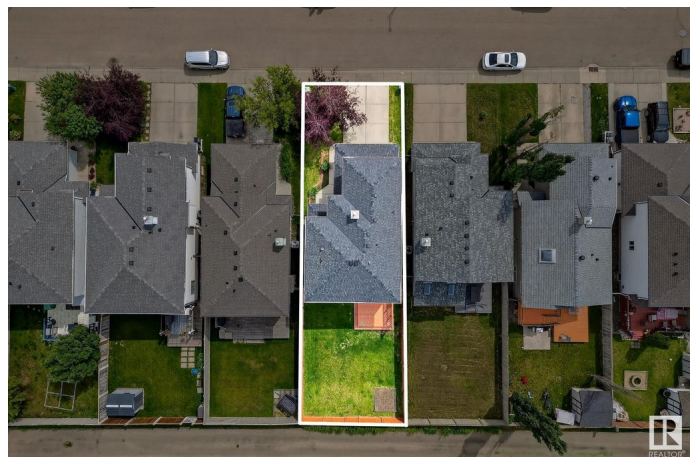
Ellerslie, Edmonton, AB

A well loved home in Ellerslie. ** 5-minute drive to South Edmonton Common shopping centre. ** Open to above & bright foyer! ** Newer roof (2021). ** Newer Washer & Dryer (2020). ** 3 bedrooms + 2.5 bathrooms. ** Large living room with a natural gas fireplace. ** Spacious bonus room great for home office and entertainment. ** Basement is a big & beautiful canvas for your new creation. ** Double attached garage. ** Close to 1,800 sqft. ** Quick and easy access to schools, international airport, shopping centres & walking trails. ***** Home is what you make it! Move in & Enjoy living!!

Built in 2004

Essential Information

MLS® #	E4449667
Price	\$489,900
Bedrooms	3
Bathrooms	2.50
Full Baths	2
Half Baths	1
Square Footage	1,778
Acres	0.00
Year Built	2004
Type	Single Family
Sub-Type	Detached Single Family



Style	2 Storey
Status	Active

Community Information

Address	8516 7 Avenue
Area	Edmonton
Subdivision	Ellerslie
City	Edmonton
County	ALBERTA
Province	AB
Postal Code	T6X 1J2

Amenities

Amenities	See Remarks
Parking Spaces	4
Parking	Double Garage Attached

Interior

Interior Features	ensuite bathroom
Appliances	Dishwasher-Built-In, Dryer, Garage Control, Garage Opener, Hood Fan, Refrigerator, Stove-Electric, Washer, Curtains and Blinds
Heating	Forced Air-1, Natural Gas
Fireplace	Yes
Fireplaces	Direct Vent
Stories	2
Has Basement	Yes
Basement	Full, Unfinished

Exterior

Exterior	Wood, Vinyl
Exterior Features	See Remarks
Roof	Asphalt Shingles
Construction	Wood, Vinyl
Foundation	Concrete Perimeter

Additional Information

Date Listed	July 25th, 2025
Days on Market	5
Zoning	Zone 53

DATA IS DEEMED RELIABLE BUT IS NOT GUARANTEED ACCURATE BY THE REALTORS® ASSOCIATION OF EDMONTON. COPYRIGHT 2025 BY THE REALTORS® ASSOCIATION OF EDMONTON. ALL RIGHTS RESERVED.Trademarks are owned or controlled by the Canadian Real Estate Association (CREA) and identify real estate professionals who are members of CREA (REALTOR®, REALTORS®) and/or the quality of services they provide (MLS®, Multiple Listing Service®)

Listing information last updated on July 29th, 2025 at 10:47pm MDT