

\$575,000 - 109 Forrest Drive, Sherwood Park

MLS® #E4449477

\$575,000

4 Bedroom, 3.00 Bathroom, 1,462 sqft

Single Family on 0.00 Acres

Forrest Greens, Sherwood Park, AB

Beautifully updated former Landmark showhome in family friendly Forrest Greens! This fully finished 1,461 sq ft bi-level boasts 4 bedrooms and 3 full bathrooms with an open concept layout, vaulted ceilings, and fresh paint throughout. Enjoy the warmth of engineered hardwood flooring and a cozy gas fireplace in the spacious living area. The kitchen features granite counters, stainless steel appliances, and plenty of storage. The primary suite offers a walk-in closet and a private 4-piece ensuite, creating a perfect retreat. The lower level includes a large rec room with second gas fireplace, 4th bedroom, laundry, and another full 4-piece bath. A true standout feature is the triple attached garage—perfect for storage, hobbies, or extra vehicles. Relax in the three-season sunroom overlooking the fully fenced backyard. Located just steps from parks and schools, this move-in-ready home combines comfort, function, and style in a family-friendly neighborhood.

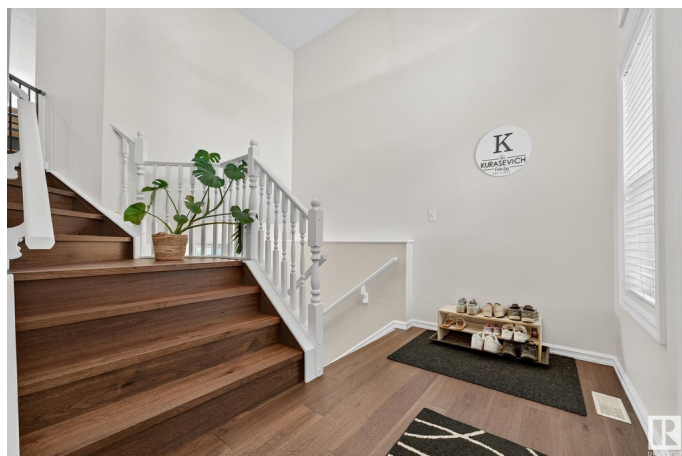
Built in 1999

Essential Information

MLS® # E4449477

Price \$575,000

Bedrooms 4



Bathrooms	3.00
Full Baths	3
Square Footage	1,462
Acres	0.00
Year Built	1999
Type	Single Family
Sub-Type	Detached Single Family
Style	Bi-Level
Status	Active

Community Information

Address	109 Forrest Drive
Area	Sherwood Park
Subdivision	Forrest Greens
City	Sherwood Park
County	ALBERTA
Province	AB
Postal Code	T8A 6A8

Amenities

Amenities	Deck, No Animal Home, No Smoking Home, Vaulted Ceiling
Parking	Triple Garage Attached

Interior

Interior Features	ensuite bathroom
Appliances	Air Conditioning-Central, Dishwasher-Built-In, Dryer, Hood Fan, Oven-Microwave, Refrigerator, Stove-Electric, Washer, Window Coverings
Heating	Forced Air-1, Natural Gas
Fireplace	Yes
Fireplaces	Mantel, Tile Surround
Stories	2
Has Basement	Yes
Basement	Full, Finished

Exterior

Exterior	Wood, Vinyl
Exterior Features	Fenced, Landscaped, Playground Nearby, Schools, Shopping Nearby
Roof	Asphalt Shingles

Construction	Wood, Vinyl
Foundation	Concrete Perimeter

Additional Information

Date Listed	July 24th, 2025
Days on Market	2
Zoning	Zone 25

DATA IS DEEMED RELIABLE BUT IS NOT GUARANTEED ACCURATE BY THE REALTORS® ASSOCIATION OF EDMONTON. COPYRIGHT 2025 BY THE REALTORS® ASSOCIATION OF EDMONTON. ALL RIGHTS RESERVED.Trademarks are owned or controlled by the Canadian Real Estate Association (CREA) and identify real estate professionals who are members of CREA (REALTOR®, REALTORS®) and/or the quality of services they provide (MLS®, Multiple Listing Service®)

Listing information last updated on July 26th, 2025 at 5:17am MDT