

\$394,900 - 409 12408 15 Avenue, Edmonton

MLS® #E4449462

\$394,900

2 Bedroom, 2.00 Bathroom, 1,123 sqft
Condo / Townhouse on 0.00 Acres

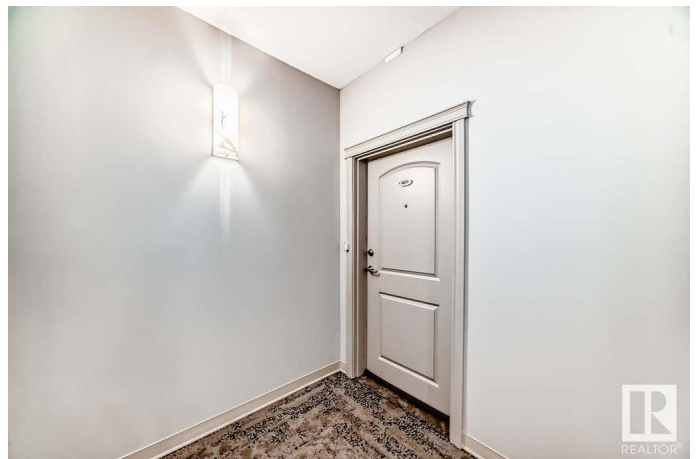
Rutherford (Edmonton), Edmonton, AB

For more information, please click on "View Listing on Realtor Website". Sophisticated and coveted corner unit with central A/C in this adult (18+) condo. A stylish entrance, independent of the living space, leads you to the dining room! New Luxury Vinyl plank flooring! The open kitchen is complete with stainless steel appliances, granite countertops, pantry, island with seating for two. The 11' tray ceiling and the nearly floor to ceiling windows embrace the living area with natural gas fireplace showcasing unobstructed views. The spacious primary bedroom features a walk-in closet and ensuite. The second bedroom is conveniently located next to the main bath. Recently painted with new high-end LVP flooring throughout. A generous laundry room, in addition to a storage room, and a huge balcony. Two titled underground parking stalls. Enjoy the gym, sauna, steam room, social/games room, guest suite, bike room and car wash. Pet friendly, with almost \$2.6 million in the reserve fund!

Built in 2008

Essential Information

MLS® #	E4449462
Price	\$394,900
Bedrooms	2



Bathrooms	2.00
Full Baths	2
Square Footage	1,123
Acres	0.00
Year Built	2008
Type	Condo / Townhouse
Sub-Type	Lowrise Apartment
Style	Single Level Apartment
Status	Active

Community Information

Address	409 12408 15 Avenue
Area	Edmonton
Subdivision	Rutherford (Edmonton)
City	Edmonton
County	ALBERTA
Province	AB
Postal Code	T6W 1X2

Amenities

Amenities	Air Conditioner, Car Wash, Ceiling 9 ft., Detectors Smoke, Exercise Room, Exterior Walls- 2"x6", Guest Suite, Intercom, No Animal Home, No Smoking Home, Parking-Visitor, Party Room, Smart/Program. Thermostat, Recreation Room/Centre, Security Door, Sprinkler System-Fire, Storage-In-Suite, Storage-Locker Room, Vinyl Windows
Parking Spaces	2
Parking	Heated, Underground

Interior

Interior Features	ensuite bathroom
Appliances	Air Conditioning-Central, Dishwasher-Built-In, Fan-Ceiling, Garage Control, Garage Opener, Garburator, Microwave Hood Fan, Oven-Microwave, Refrigerator, Stacked Washer/Dryer, Stove-Electric, Window Coverings
Heating	Fan Coil, Natural Gas
Fireplace	Yes
Fireplaces	Corner
# of Stories	4
Stories	1
Has Basement	Yes

Basement	None, No Basement
----------	-------------------

Exterior

Exterior	Wood, Stone, Stucco, Vinyl
----------	----------------------------

Exterior Features	Airport Nearby, Corner Lot, Golf Nearby, Playground Nearby, Public Transportation, Schools, Shopping Nearby
-------------------	---

Roof	Asphalt Shingles
------	------------------

Construction	Wood, Stone, Stucco, Vinyl
--------------	----------------------------

Foundation	Concrete Perimeter
------------	--------------------

School Information

Elementary	Johnny Bright School K-9
------------	--------------------------

Middle	Johnny Bright School K-9
--------	--------------------------

High	Dr. Anne Anderson High
------	------------------------

Additional Information

Date Listed	July 24th, 2025
-------------	-----------------

Days on Market	5
----------------	---

Zoning	Zone 55
--------	---------

HOA Fees	75
----------	----

HOA Fees Freq.	Annually
----------------	----------

Condo Fee	\$561
-----------	-------

DATA IS DEEMED RELIABLE BUT IS NOT GUARANTEED ACCURATE BY THE REALTORS® ASSOCIATION OF EDMONTON. COPYRIGHT 2025 BY THE REALTORS® ASSOCIATION OF EDMONTON. ALL RIGHTS RESERVED. Trademarks are owned or controlled by the Canadian Real Estate Association (CREA) and identify real estate professionals who are members of CREA (REALTOR®, REALTORS®) and/or the quality of services they provide (MLS®, Multiple Listing Service®)

Listing information last updated on July 29th, 2025 at 11:03am MDT