

## \$565,000 - 13 Newmarket Way, St. Albert

MLS® #E4449371

**\$565,000**

4 Bedroom, 3.00 Bathroom, 1,286 sqft  
Single Family on 0.00 Acres

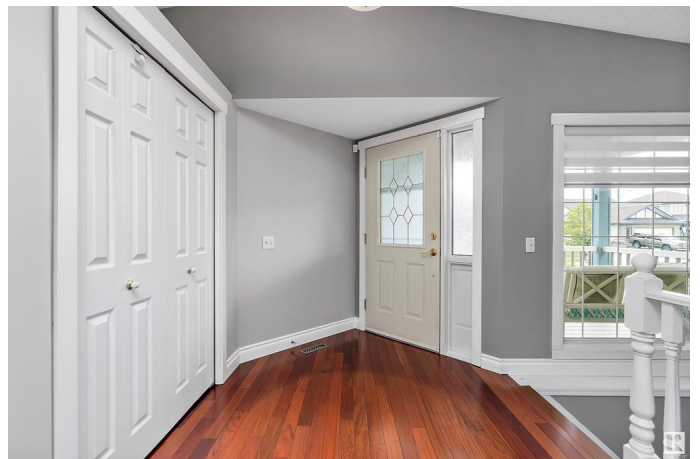
North Ridge, St. Albert, AB

Welcome to this move-in ready NORTH RIDGE bungalow situated on a prime corner lot! Nearly 2,600 sf of F/F living space with vaulted ceilings, heated double attached garage & recent updates that incl. shingles & HWT (2022). The main floor features cherry hardwood, a convenient laundry/mud room with ample storage, 2 spacious bedrooms incl. a primary w/ a walk-in closet & 3pc ensuite, plus a 4pc main bath. The open-concept kitchen offers granite counters, mozaic tile backsplash, custom pull-outs & skylight, overlooking the spacious living room with its gas fireplace/mantle & dining area. Zebra roller blinds dress all the main floor windows while the patio doors have built-in shades. Downstairs, the finished basement incl. a large rec room, 2 additional bedrooms (1 with cheater ensuite) & 3pc bath. Enjoy the private, low-maintenance deck equipped with a gas BBQ hook-up, surrounded by mature aspen & cherry trees, perfect for entertaining. Lovingly maintained & ready for a quick possession in its new chapter!

Built in 2000

### Essential Information

MLS® #	E4449371
Price	\$565,000



Bedrooms	4
Bathrooms	3.00
Full Baths	3
Square Footage	1,286
Acres	0.00
Year Built	2000
Type	Single Family
Sub-Type	Detached Single Family
Style	Bungalow
Status	Active

### Community Information

Address	13 Newmarket Way
Area	St. Albert
Subdivision	North Ridge
City	St. Albert
County	ALBERTA
Province	AB
Postal Code	T8N 6Y8

### Amenities

Amenities	On Street Parking, Deck, Detectors Smoke, Front Porch, Skylight, Vaulted Ceiling, Vinyl Windows, Vacuum System-Roughed-In
Parking	Double Garage Attached

### Interior

Interior Features	ensuite bathroom
Appliances	Dishwasher-Built-In, Dryer, Garburator, Hood Fan, Refrigerator, Stove-Gas, Washer, Curtains and Blinds
Heating	Forced Air-1, Natural Gas
Fireplace	Yes
Fireplaces	Mantel, Tile Surround
Stories	2
Has Basement	Yes
Basement	Full, Finished

### Exterior

Exterior	Wood, Brick, Vinyl
Exterior Features	Fenced, Flat Site, Fruit Trees/Shrubs, Landscaped, No Back Lane,

Playground Nearby, Public Transportation, Schools, Shopping Nearby,  
Treed Lot

Roof	Asphalt Shingles
Construction	Wood, Brick, Vinyl
Foundation	Concrete Perimeter

### School Information

High	Bellerose Composite HS
------	------------------------

### Additional Information

Date Listed	July 24th, 2025
Days on Market	2
Zoning	Zone 24

DATA IS DEEMED RELIABLE BUT IS NOT GUARANTEED ACCURATE BY THE REALTORS® ASSOCIATION OF EDMONTON. COPYRIGHT 2025 BY THE REALTORS® ASSOCIATION OF EDMONTON. ALL RIGHTS RESERVED. Trademarks are owned or controlled by the Canadian Real Estate Association (CREA) and identify real estate professionals who are members of CREA (REALTOR®, REALTORS®) and/or the quality of services they provide (MLS®, Multiple Listing Service®)

Listing information last updated on July 26th, 2025 at 5:32am MDT