

## \$1,450 - 104 245 Edwards Drive, Edmonton

MLS® #E4448625

**\$1,450**

2 Bedroom, 2.00 Bathroom, 823 sqft

Rental on 0.00 Acres

Ellerslie, Edmonton, AB

Welcome Home! Wonderful 2 Bed 2 Bath Condo For Rent in Park Place, Ellerslie South Edmonton. Open concept kitchen with an island, a dining area and a spacious living room with a patio! The large master bedroom boasts a walkthrough closet to the full 4pc ensuite! Ground level unit, no stairs or elevators required. In suite Laundry. South facing, lots of natural light! Near all amenities. Quick and Easy access to Ellerslie Center, Highway 2 and the Anthony Henday.

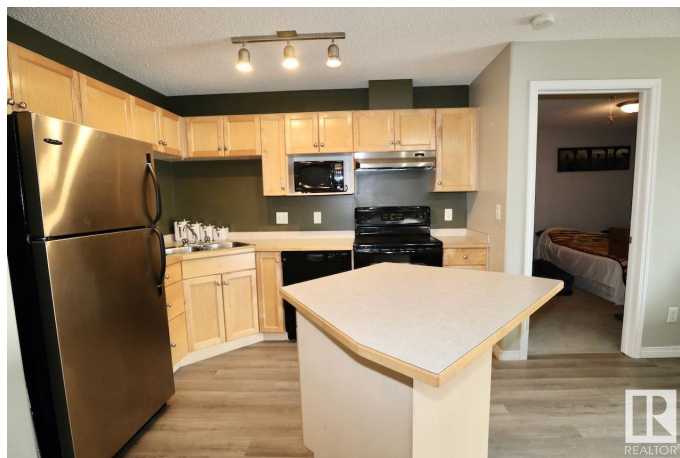
Built in 2004

### Essential Information

MLS® #	E4448625
Price	\$1,450
Bedrooms	2
Bathrooms	2.00
Full Baths	2
Square Footage	823
Acres	0.00
Year Built	2004
Type	Rental
Style	Single Level Apartment
Status	Active

### Community Information

Address 104 245 Edwards Drive



Area	Edmonton
Subdivision	Ellerslie
City	Edmonton
County	ALBERTA
Province	AB
Postal Code	T6X 1J9

### **Amenities**

Parking	Stall
---------	-------

### **Interior**

Appliances	Dishwasher-Built-In, Dryer, Microwave Hood Fan, Oven-Built-In, Refrigerator, Stove-Electric, Washer, Other
------------	--

### **Additional Information**

Date Listed	July 18th, 2025
-------------	-----------------

Days on Market	1
----------------	---

Zoning	Zone 53
--------	---------

DATA IS DEEMED RELIABLE BUT IS NOT GUARANTEED ACCURATE BY THE REALTORS® ASSOCIATION OF EDMONTON. COPYRIGHT 2025 BY THE REALTORS® ASSOCIATION OF EDMONTON. ALL RIGHTS RESERVED. Trademarks are owned or controlled by the Canadian Real Estate Association (CREA) and identify real estate professionals who are members of CREA (REALTOR®, REALTORS®) and/or the quality of services they provide (MLS®, Multiple Listing Service®)

Listing information last updated on July 19th, 2025 at 3:32am MDT