

## \$300,000 - 8329 160 Avenue, Edmonton

MLS® #E4448184

**\$300,000**

3 Bedroom, 2.50 Bathroom, 1,477 sqft

Condo / Townhouse on 0.00 Acres

Belle Rive, Edmonton, AB

This stunning end-unit townhome boasts a double-car garage and a host of captivating features. Step inside to discover an inviting living room, complemented by a large bay window and a cozy fireplace. A convenient half bath on the main floor adds a practical touch. The functional kitchen is complete with a window over the sink, a pantry, and an adjacent dining area with access to a back deck via sliding doors. The expansive communal yard, meticulously maintained by the condo, offers a perfect spot for outdoor activities and relaxation. Upstairs, you'll find 3 bedrooms, including a spacious primary with large bay windows and a 4-piece en-suite bath. The finished basement introduces a versatile flex space, ideal for a home office, gym, or a dream mudroom, with convenient garage access. Nestled in the family-friendly community of Belle Rive and located across the street from a charming playground and basketball courts, this home offers the ideal blend of convenience and leisure.

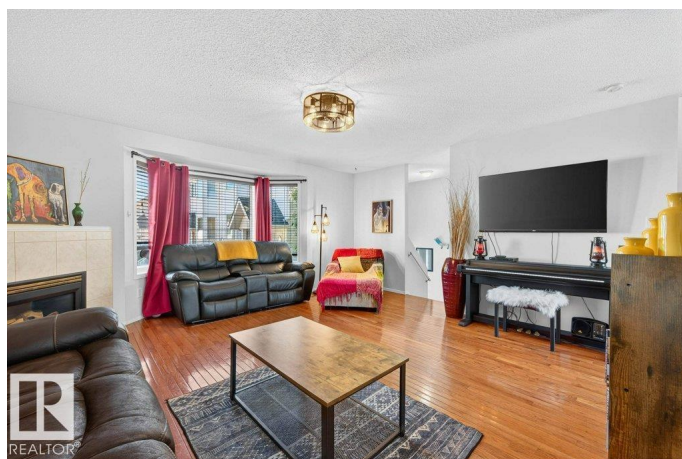
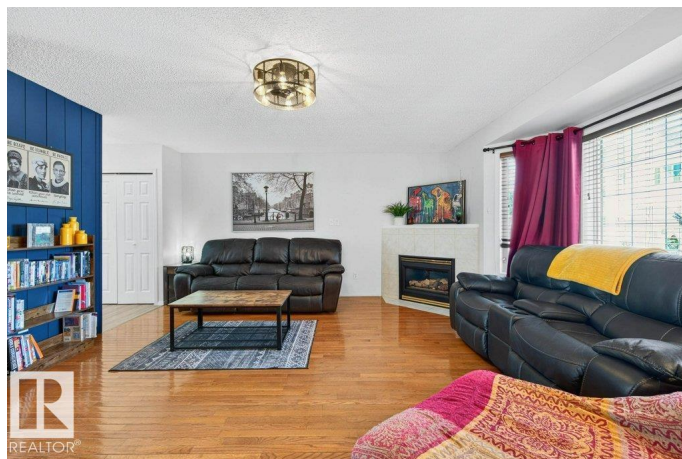
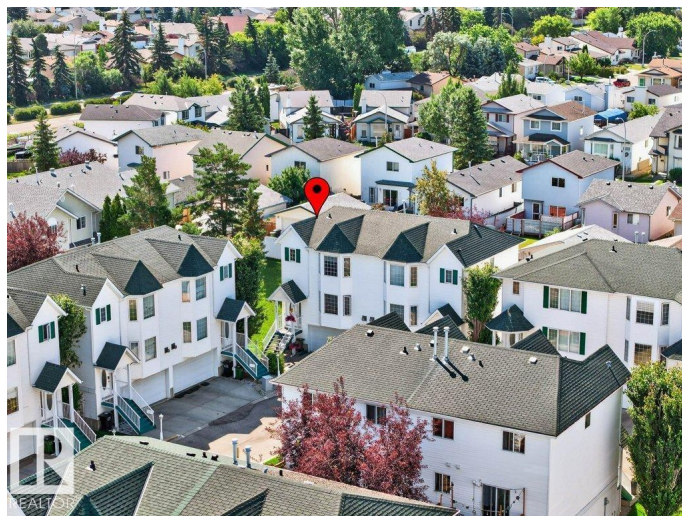
Built in 2000

### Essential Information

MLS® # E4448184

Price \$300,000

Bedrooms 3



Bathrooms	2.50
Full Baths	2
Half Baths	1
Square Footage	1,477
Acres	0.00
Year Built	2000
Type	Condo / Townhouse
Sub-Type	Townhouse
Style	2 Storey
Status	Active

### Community Information

Address	8329 160 Avenue
Area	Edmonton
Subdivision	Belle Rive
City	Edmonton
County	ALBERTA
Province	AB
Postal Code	T5Z 3G9

### Amenities

Amenities	Deck, Hot Water Natural Gas
Parking	Double Garage Attached

### Interior

Interior Features	ensuite bathroom
Appliances	Dishwasher-Built-In, Garage Control, Garage Opener, Hood Fan, Refrigerator, Stove-Electric, Window Coverings
Heating	Forced Air-1, Natural Gas
Stories	3
Has Basement	Yes
Basement	Partial, Finished

### Exterior

Exterior	Wood, Vinyl
Exterior Features	Low Maintenance Landscape
Roof	Asphalt Shingles
Construction	Wood, Vinyl
Foundation	Concrete Perimeter

**Additional Information**

Date Listed	July 17th, 2025
Days on Market	51
Zoning	Zone 28
Condo Fee	\$252

DATA IS DEEMED RELIABLE BUT IS NOT GUARANTEED ACCURATE BY THE REALTORS® ASSOCIATION OF EDMONTON. COPYRIGHT 2025 BY THE REALTORS® ASSOCIATION OF EDMONTON. ALL RIGHTS RESERVED.Trademarks are owned or controlled by the Canadian Real Estate Association (CREA) and identify real estate professionals who are members of CREA (REALTOR®, REALTORS®) and/or the quality of services they provide (MLS®, Multiple Listing Service®)

Listing information last updated on September 6th, 2025 at 1:32am MDT