

\$230,000 - N/A, Edmonton

MLS® #E4448181

\$230,000

1 Bedroom, 1.00 Bathroom, 701 sqft

Condo / Townhouse on 0.00 Acres

Ermineskin, Edmonton, AB

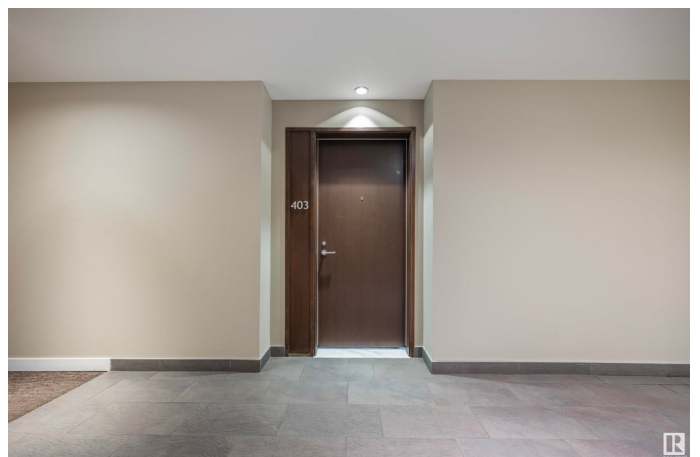
Luxurious and immaculate 1-bedroom condo in Regent Century Park featuring ensuite laundry, heated underground parking, and premium concrete and steel construction for superior soundproofing and fire resistance. This pet-friendly building includes an enclosed dog park directly west of the complex. Condo fees cover all utilities and more - electricity, heat, AC, water, sewer, and high-speed internet, offering exceptional value and convenience. Inside, you'll find granite countertops, stainless steel appliances, tile and LVP flooring, and fresh paint throughout. The spacious layout offers comfort and functionality, ideal for professionals, students, or investors. Conveniently located just steps from the LRT for fast access to the University of Alberta and Downtown. Walk to grocery stores, restaurants, cafes, and everyday amenities in minutes. This unit is spotless, move-in ready, and available for quick possession. A fantastic opportunity to own in one of Edmonton's most connected and upscale developments.

Built in 2009

Essential Information

MLS® # E4448181

Price \$230,000



Bedrooms	1
Bathrooms	1.00
Full Baths	1
Square Footage	701
Acres	0.00
Year Built	2009
Type	Condo / Townhouse
Sub-Type	Apartment High Rise
Style	Single Level Apartment
Status	Active

Community Information

Address	N/A
Area	Edmonton
Subdivision	Ermineskin
City	Edmonton
County	ALBERTA
Province	AB
Postal Code	T6J 3T1

Amenities

Amenities	Air Conditioner, Ceiling 9 ft., Dog Run-Fenced In, Exercise Room, No Animal Home, No Smoking Home, Parking-Visitor, Storage Cage, Natural Gas BBQ Hookup
Parking	Underground

Interior

Appliances	Air Conditioning-Central, Dryer, Microwave Hood Fan, Oven-Built-In, Oven-Microwave, Refrigerator, Stove-Gas, Washer, Window Coverings
Heating	Heat Pump, Natural Gas
# of Stories	8
Stories	1
Has Basement	Yes
Basement	None, No Basement

Exterior

Exterior	Concrete, Brick, Metal
Exterior Features	Golf Nearby, Landscaped, Playground Nearby, Public Transportation, Schools, Shopping Nearby

Roof	Flat
Construction	Concrete, Brick, Metal
Foundation	Concrete Perimeter

Additional Information

Date Listed	July 17th, 2025
Days on Market	4
Zoning	Zone 16
Condo Fee	\$605

DATA IS DEEMED RELIABLE BUT IS NOT GUARANTEED ACCURATE BY THE REALTORS® ASSOCIATION OF EDMONTON. COPYRIGHT 2025 BY THE REALTORS® ASSOCIATION OF EDMONTON. ALL RIGHTS RESERVED.Trademarks are owned or controlled by the Canadian Real Estate Association (CREA) and identify real estate professionals who are members of CREA (REALTOR®, REALTORS®) and/or the quality of services they provide (MLS®, Multiple Listing Service®)

Listing information last updated on July 21st, 2025 at 8:47pm MDT