

\$363,000 - 67 Kiniski Crescent, Edmonton

MLS® #E4448155

\$363,000

3 Bedroom, 1.00 Bathroom, 968 sqft

Single Family on 0.00 Acres

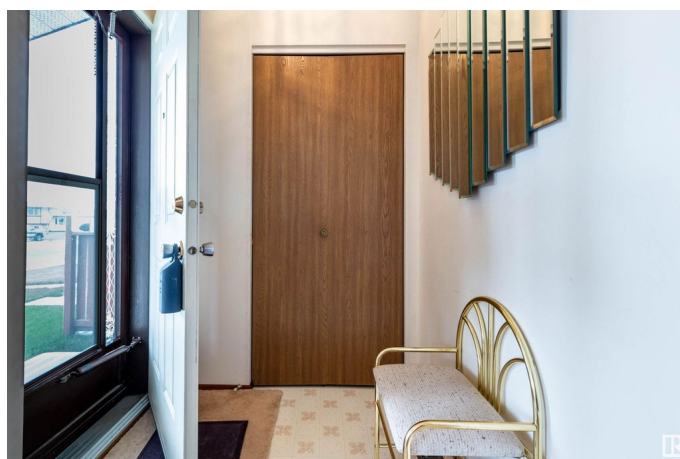
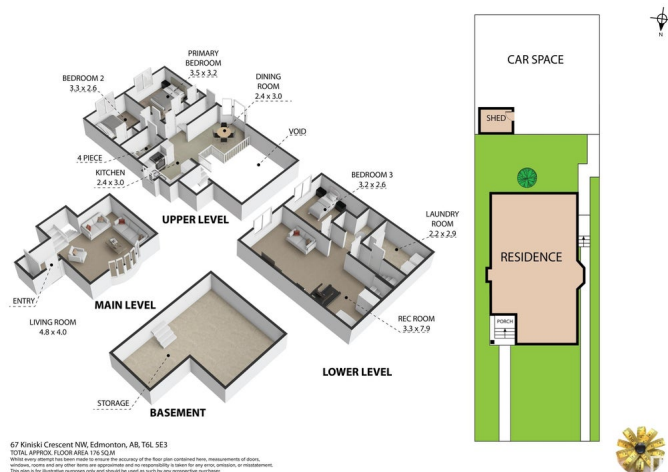
Kiniski Gardens, Edmonton, AB

Welcome to the highly desired KINISKI GARDENS! The moment you walk into this IMMACULATE kept home, you will immediately be impressed by the PRIDE OF OWNERSHIP, VAULTED ceiling and abundance of NATURAL LIGHT. A large living room welcomes you and begins the tour of this incredibly SPACIOUS property. The OPEN CONCEPT floor plan perfectly flows between living room, dining room and COZY kitchen. Entering the remainder of the upper levels, you will pleasantly find 2 well appointed BEDROOMS and a 4 pc BATH. Next on the tour, the lower levels continues to impress with 3rd BEDROOM, GIGANTIC recreation room, laundry and HUGE storage room. A large yard and parking pad concludes the tour of this FANTASTIC property. Walking distance to parks, schools, community hall, child care, and shopping, this home has it ALL!

Built in 1988

Essential Information

| | |
|----------------|-----------|
| MLS® # | E4448155 |
| Price | \$363,000 |
| Bedrooms | 3 |
| Bathrooms | 1.00 |
| Full Baths | 1 |
| Square Footage | 968 |



| | |
|------------|------------------------|
| Acres | 0.00 |
| Year Built | 1988 |
| Type | Single Family |
| Sub-Type | Detached Single Family |
| Style | 4 Level Split |
| Status | Active |

Community Information

| | |
|-------------|---------------------|
| Address | 67 Kiniski Crescent |
| Area | Edmonton |
| Subdivision | Kiniski Gardens |
| City | Edmonton |
| County | ALBERTA |
| Province | AB |
| Postal Code | T6L 5E3 |

Amenities

| | |
|-----------|---|
| Amenities | Closet Organizers, No Smoking Home, Vaulted Ceiling |
| Parking | 2 Outdoor Stalls |

Interior

| | |
|--------------|--|
| Appliances | Refrigerator, Stove-Electric, Window Coverings |
| Heating | Forced Air-1, Natural Gas |
| Stories | 3 |
| Has Basement | Yes |
| Basement | Full, Partially Finished |

Exterior

| | |
|-------------------|--|
| Exterior | Wood, Vinyl |
| Exterior Features | Back Lane, Flat Site, Level Land, Playground Nearby, Public Transportation, Schools, Shopping Nearby, Partially Fenced |
| Roof | Asphalt Shingles |
| Construction | Wood, Vinyl |
| Foundation | Concrete Perimeter |

Additional Information

| | |
|----------------|-----------------|
| Date Listed | July 16th, 2025 |
| Days on Market | 13 |
| Zoning | Zone 29 |

DATA IS DEEMED RELIABLE BUT IS NOT GUARANTEED ACCURATE BY THE REALTORS® ASSOCIATION OF EDMONTON. COPYRIGHT 2025 BY THE REALTORS® ASSOCIATION OF EDMONTON. ALL RIGHTS RESERVED.Trademarks are owned or controlled by the Canadian Real Estate Association (CREA) and identify real estate professionals who are members of CREA (REALTOR®, REALTORS®) and/or the quality of services they provide (MLS®, Multiple Listing Service®)

Listing information last updated on July 29th, 2025 at 1:49pm MDT