

# \$179,999 - 16121 110 Avenue, Edmonton

MLS® #E4446457

**\$179,999**

3 Bedroom, 1.50 Bathroom, 1,066 sqft  
Condo / Townhouse on 0.00 Acres

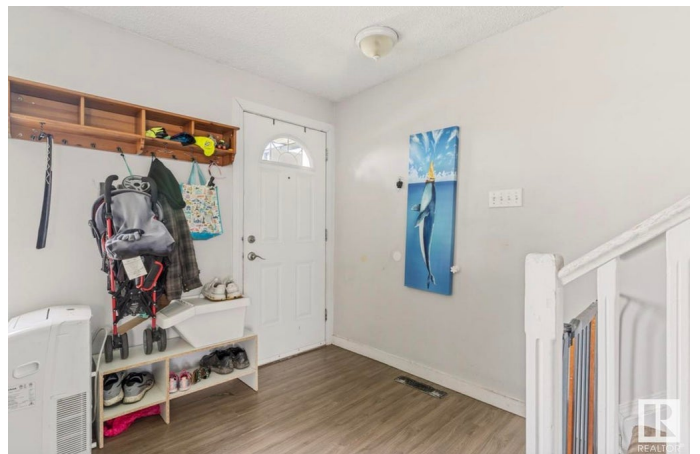
Mayfield, Edmonton, AB

Welcome to this beautifully updated 3-bedroom, 2-bathroom townhouse located in the desirable community of Mayfield. Perfectly situated directly across from the scenic and family-friendly Mayfield Park, this home offers the ideal blend of comfort, convenience, and nature. Step inside to find spacious, sun-filled rooms with large windows that allow for an abundance of natural light throughout the day. The main living areas feature brand new vinyl plank flooring, creating a modern and cohesive look. The basement adds even more living space with a large family room—perfect for movie nights or a kids’ play area—as well as ample storage. Outdoors, enjoy a generous private yard, perfect for relaxing, gardening, or entertaining guests. This well-maintained townhouse is close to schools, shopping, and public transit, making it an excellent choice for families, first-time buyers, or investors. Don’t miss out on this fantastic opportunity in one of west Edmonton’s most established neighborhoods!

Built in 1964

## Essential Information

MLS® #	E4446457
Price	\$179,999
Bedrooms	3



Bathrooms	1.50
Full Baths	1
Half Baths	1
Square Footage	1,066
Acres	0.00
Year Built	1964
Type	Condo / Townhouse
Sub-Type	Townhouse
Style	2 Storey
Status	Active

### Community Information

Address	16121 110 Avenue
Area	Edmonton
Subdivision	Mayfield
City	Edmonton
County	ALBERTA
Province	AB
Postal Code	T5P 1G5

### Amenities

Amenities	No Smoking Home, See Remarks
Parking	Stall

### Interior

Appliances	Dryer, Refrigerator, Stove-Electric, Washer
Heating	Forced Air-1, Natural Gas
Stories	3
Has Basement	Yes
Basement	Full, Finished

### Exterior

Exterior	Wood, Stucco, Vinyl
Exterior Features	Fenced, Flat Site, Landscaped, Low Maintenance Landscape, Picnic Area, Playground Nearby, Public Swimming Pool, Public Transportation, Schools, Shopping Nearby, See Remarks
Roof	Asphalt Shingles
Construction	Wood, Stucco, Vinyl
Foundation	Concrete Perimeter

**Additional Information**

Date Listed	July 8th, 2025
Days on Market	50
Zoning	Zone 21
Condo Fee	\$420

DATA IS DEEMED RELIABLE BUT IS NOT GUARANTEED ACCURATE BY THE REALTORS® ASSOCIATION OF EDMONTON. COPYRIGHT 2025 BY THE REALTORS® ASSOCIATION OF EDMONTON. ALL RIGHTS RESERVED.Trademarks are owned or controlled by the Canadian Real Estate Association (CREA) and identify real estate professionals who are members of CREA (REALTOR®, REALTORS®) and/or the quality of services they provide (MLS®, Multiple Listing Service®)

Listing information last updated on August 27th, 2025 at 12:02pm MDT