

\$1,119,999 - 10446 142 Street, Edmonton

MLS® #E4446323

\$1,119,999

4 Bedroom, 3.50 Bathroom, 1,133 sqft

Single Family on 0.00 Acres

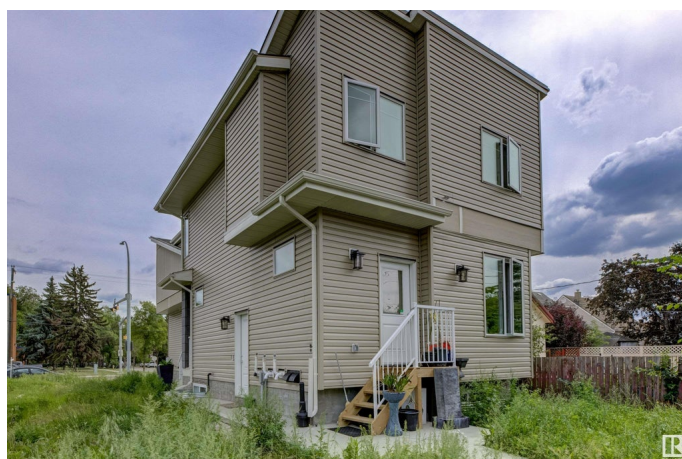
Grovenor, Edmonton, AB

Welcome to this stunning front-and-back duplex located in the sought-after community of Grovenor! A rare opportunity to own 4 separate legal units – ideal for investors or multi-family living. Each side of the duplex offers identical layouts, featuring: Main Units: 3 spacious bedrooms and 2.5 bathrooms across two beautifully finished storeys. Enjoy open-concept living with large windows bringing in tons of natural light and modern finishes throughout. Legal Basement Suites: 1 bedroom, 1 full bathroom, full kitchen, private laundry, and a separate entrance – perfect for rental income or extended family. That’s a total of 8 bedrooms, 6 full bathrooms, and 2 half bathrooms across all units.

Built in 2023

Essential Information

MLS® #	E4446323
Price	\$1,119,999
Bedrooms	4
Bathrooms	3.50
Full Baths	3
Half Baths	1
Square Footage	1,133
Acres	0.00



Year Built	2023
Type	Single Family
Sub-Type	Duplex Front and Back
Style	2 Storey
Status	Active

Community Information

Address	10446 142 Street
Area	Edmonton
Subdivision	Grovenor
City	Edmonton
County	ALBERTA
Province	AB
Postal Code	T5N 2P2

Amenities

Amenities	See Remarks, Infill Property
Parking	Front/Rear Drive Access

Interior

Interior Features	ensuite bathroom
Appliances	Dryer-Two, Refrigerators-Two, Stoves-Two, Washers-Two, Dishwasher-Two
Heating	Forced Air-1, Natural Gas
Stories	2
Has Suite	Yes
Has Basement	Yes
Basement	Full, Finished

Exterior

Exterior	Wood, Vinyl
Exterior Features	Commercial, Playground Nearby, Public Transportation, Shopping Nearby
Roof	Asphalt Shingles
Construction	Wood, Vinyl
Foundation	Concrete Perimeter

Additional Information

Date Listed	July 7th, 2025
-------------	----------------

Days on Market 70

Zoning Zone 21

DATA IS DEEMED RELIABLE BUT IS NOT GUARANTEED ACCURATE BY THE REALTORS® ASSOCIATION OF EDMONTON. COPYRIGHT 2025 BY THE REALTORS® ASSOCIATION OF EDMONTON. ALL RIGHTS RESERVED. Trademarks are owned or controlled by the Canadian Real Estate Association (CREA) and identify real estate professionals who are members of CREA (REALTOR®, REALTORS®) and/or the quality of services they provide (MLS®, Multiple Listing Service®)

Listing information last updated on September 15th, 2025 at 3:48pm MDT