

\$549,900 - 32 Carriere Crescent, Beaumont

MLS® #E4446236

\$549,900

5 Bedroom, 2.50 Bathroom, 2,279 sqft
Single Family on 0.00 Acres

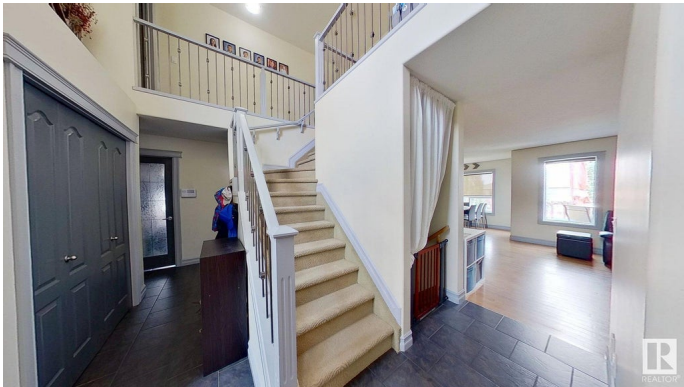
Citadel Ridge, Beaumont, AB

Spacious 5-bedroom, 2-story home perfectly situated near shopping, schools, and a community rec center. This inviting residence features an open-concept layout with a bright living area and ample dining space—ideal for families and entertaining. Upstairs includes generously sized bedrooms. Step outside to enjoy a large backyard and a beautiful deck, perfect for outdoor gatherings or quiet evenings. With easy access to parks, transit, and everyday amenities, this home offers both comfort and convenience in a family-friendly neighborhood. New shingles 2024.

Built in 2007

Essential Information

MLS® #	E4446236
Price	\$549,900
Bedrooms	5
Bathrooms	2.50
Full Baths	2
Half Baths	1
Square Footage	2,279
Acres	0.00
Year Built	2007
Type	Single Family
Sub-Type	Residential Attached
Style	2 Storey



Status Active

Community Information

Address 32 Carriere Crescent
Area Beaumont
Subdivision Citadel Ridge
City Beaumont
County ALBERTA
Province AB
Postal Code T4X 0A8

Amenities

Amenities Deck, Detectors Smoke, Vinyl Windows, See Remarks
Parking Spaces 4
Parking Double Garage Attached

Interior

Interior Features ensuite bathroom
Appliances Dishwasher-Built-In, Dryer, Refrigerator, Stove-Electric, Washer, Window Coverings
Heating Forced Air-1, Natural Gas
Fireplace Yes
Fireplaces Insert
Stories 3
Has Basement Yes
Basement Full, Partially Finished

Exterior

Exterior Wood, Brick, Vinyl
Exterior Features Fenced, Golf Nearby, Hillside, Landscaped, Low Maintenance Landscape, No Back Lane, No Through Road, Schools, Shopping Nearby, View City, See Remarks
Roof Asphalt Shingles
Construction Wood, Brick, Vinyl
Foundation Concrete Perimeter

Additional Information

Date Listed July 6th, 2025
Days on Market 24
Zoning Zone 82

DATA IS DEEMED RELIABLE BUT IS NOT GUARANTEED ACCURATE BY THE REALTORS® ASSOCIATION OF EDMONTON. COPYRIGHT 2025 BY THE REALTORS® ASSOCIATION OF EDMONTON. ALL RIGHTS RESERVED.Trademarks are owned or controlled by the Canadian Real Estate Association (CREA) and identify real estate professionals who are members of CREA (REALTOR®, REALTORS®) and/or the quality of services they provide (MLS®, Multiple Listing Service®)

Listing information last updated on July 29th, 2025 at 10:17pm MDT