

# \$650,000 - 9707/9703 64 Avenue, Edmonton

MLS® #E4445941

**\$650,000**

0 Bedroom, 0.00 Bathroom,  
Single Family on 0.00 Acres

Hazeldean, Edmonton, AB

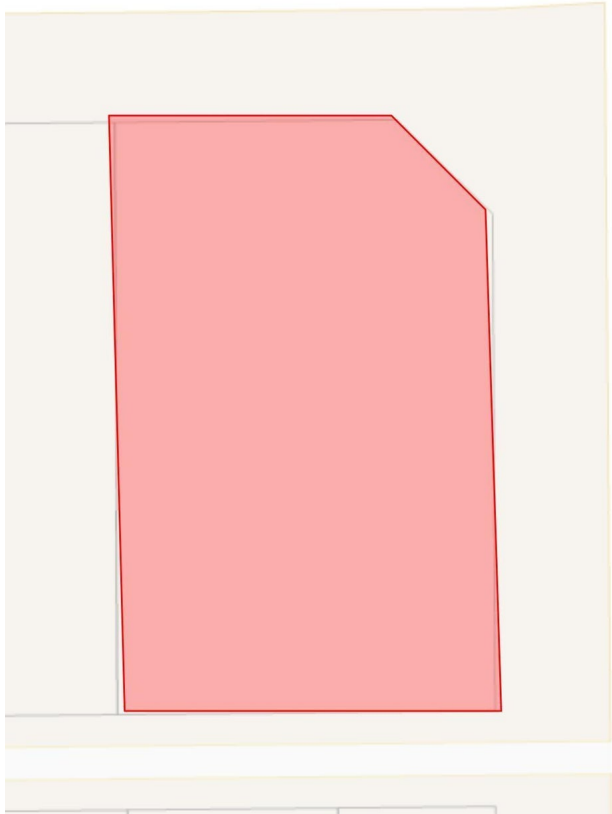
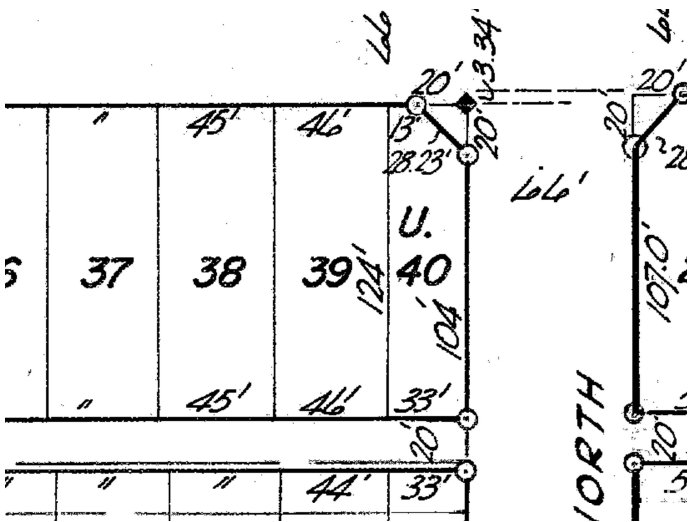
ATTENTION DEVELOPERS - Do not miss out on this huge corner lot located in the desirable community of Hazeldean. A lot like this does not come up often. With the lot measuring 79 x 124 bringing that to approx of a total lot size is 891.40m2 or 9796 sqft. With the City building requirements include 75m2 of lot per living unit up to a maximum of 45% of lot coverage it makes opportunities endless on this lot. This property is conveniently located close to public transit, shopping, schools and all amenities. Don't miss this great opportunity!!

## Essential Information

MLS® #	E4445941
Price	\$650,000
Bathrooms	0.00
Acres	0.00
Type	Single Family
Sub-Type	Vacant Lot/Land
Status	Active

## Community Information

Address	9707/9703 64 Avenue
Area	Edmonton
Subdivision	Hazeldean
City	Edmonton
County	ALBERTA



Province AB  
Postal Code T6E 0J4

Amenities

Parking Double Garage Detached

Exterior

Exterior Features Back Lane, Corner Lot, Playground Nearby, Public Transportation, Schools, Shopping Nearby

Additional Information

Date Listed July 4th, 2025  
Days on Market 5  
Zoning Zone 17

DATA IS DEEMED RELIABLE BUT IS NOT GUARANTEED ACCURATE BY THE REALTORS® ASSOCIATION OF EDMONTON. COPYRIGHT 2025 BY THE REALTORS® ASSOCIATION OF EDMONTON. ALL RIGHTS RESERVED.Trademarks are owned or controlled by the Canadian Real Estate Association (CREA) and identify real estate professionals who are members of CREA (REALTOR®, REALTORS®) and/or the quality of services they provide (MLS®, Multiple Listing Service®)  
Listing information last updated on July 9th, 2025 at 11:02am MDT