

\$239,900 - 212 15499 Castle Downs Road, Edmonton

MLS® #E4445912

\$239,900

1 Bedroom, 2.00 Bathroom, 1,186 sqft

Condo / Townhouse on 0.00 Acres

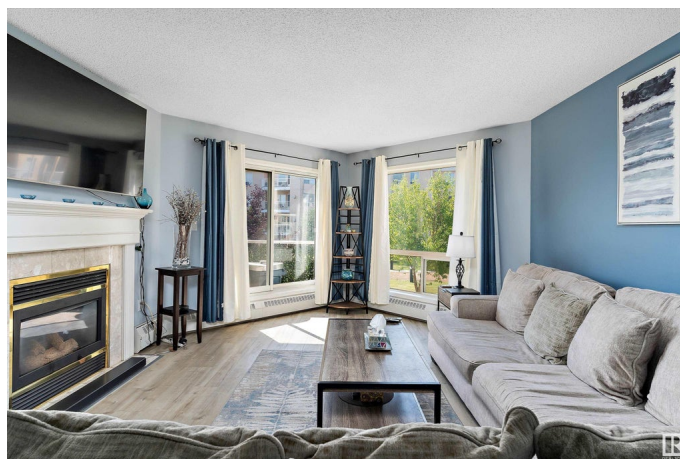
Beaumaris, Edmonton, AB

Fully Renovated 1-Bed + Den with Lake Views! Enjoy modern lakeside living in this beautifully updated 1-bedroom + den, 2-bath unit in Beaumaris on the Lake. This 2nd-floor suite offers scenic views of Lake Beaumaris and access to the lakeside trail. Just steps to shopping, medical services, transit, and the YMCA. Inside, you'll find stylish modern finishes, new lighting, and a renovated kitchen with quartz counters, custom pullouts, and under-cabinet lighting. The spacious living room features a cozy gas fireplace and access to a large balcony overlooking the gardens and lake. Enjoy resort-style amenities: indoor pool, hot tub, fitness room, party room, gazebo, and secure building features. This 18+ pet-free complex offers peace and privacy. Condo fees include gas and water. Comes with powered parking stall and ample visitor parking. A rare opportunity for affordable, low-maintenance lakeside living!

Built in 1992

Essential Information

MLS® #	E4445912
Price	\$239,900
Bedrooms	1
Bathrooms	2.00
Full Baths	2



Square Footage	1,186
Acres	0.00
Year Built	1992
Type	Condo / Townhouse
Sub-Type	Lowrise Apartment
Style	Single Level Apartment
Status	Active

Community Information

Address	212 15499 Castle Downs Road
Area	Edmonton
Subdivision	Beaumaris
City	Edmonton
County	ALBERTA
Province	AB
Postal Code	T5X 5Y3

Amenities

Amenities	Deck, Detectors Smoke, Exercise Room, Gazebo, Guest Suite, No Animal Home, No Smoking Home, Parking-Visitor, Party Room, Pool-Indoor, Security Door, Social Rooms, Storage-In-Suite
Parking	Stall
Is Waterfront	Yes
Has Pool	Yes

Interior

Interior Features	ensuite bathroom
Appliances	Dishwasher-Built-In, Dryer, Microwave Hood Fan, Refrigerator, Stove-Electric, Washer, Window Coverings
Heating	Hot Water, Natural Gas
Fireplace	Yes
Fireplaces	Tile Surround
# of Stories	4
Stories	1
Has Basement	Yes
Basement	None, No Basement

Exterior

Exterior	Wood, Stucco
----------	--------------

Exterior Features	Backs Onto Lake, Fenced, Gated Community, Landscaped, Picnic Area, Playground Nearby, Public Transportation, Shopping Nearby, View Lake
Roof	Asphalt Shingles
Construction	Wood, Stucco
Foundation	Concrete Perimeter

Additional Information

Date Listed	July 4th, 2025
Days on Market	54
Zoning	Zone 27
Condo Fee	\$616

DATA IS DEEMED RELIABLE BUT IS NOT GUARANTEED ACCURATE BY THE REALTORS® ASSOCIATION OF EDMONTON. COPYRIGHT 2025 BY THE REALTORS® ASSOCIATION OF EDMONTON. ALL RIGHTS RESERVED. Trademarks are owned or controlled by the Canadian Real Estate Association (CREA) and identify real estate professionals who are members of CREA (REALTOR®, REALTORS®) and/or the quality of services they provide (MLS®, Multiple Listing Service®)

Listing information last updated on August 27th, 2025 at 8:32am MDT