

\$519,900 - 5011 142 Avenue, Edmonton

MLS® #E4445813

\$519,900

3 Bedroom, 3.00 Bathroom, 1,999 sqft

Single Family on 0.00 Acres

York, Edmonton, AB

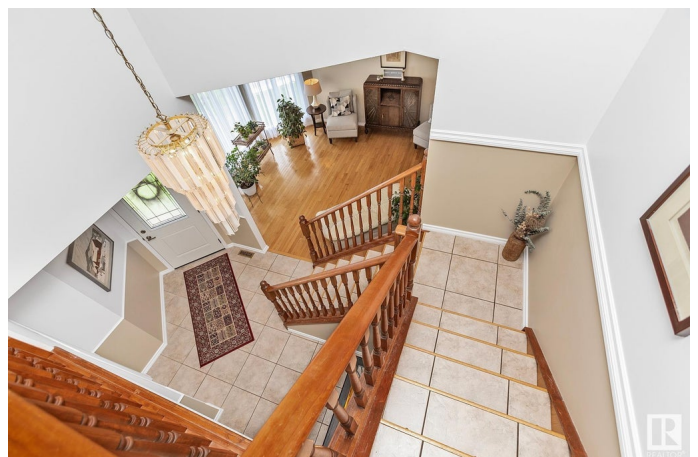
This stunning home reflects a strong sense of ownership & located in a quiet cul-de-sac, ensuring a peaceful living environment. The property boasts excellent neighbors & is surrounded by mature landscaping, including pear & crab apple trees, plus raspberry patch. The main floor presents a well-designed layout showcasing a large kitchen with oak cabinetry, S/S appliances & access to a spacious back yard & deck. Completing the main level is a cozy family room, dining room, large front living room & convenient laundry room. Upstairs the master suite offers a walk-in closet, make-up station & 4-piece ensuite plus 2 more bedrooms & main bath. The fully finished basement has a bar & gas fireplace, perfect for entertaining. Conveniently located near all amenities, easy access to the Manning Fwy & Anthony Henday. Both Londonderry & Claireview rec centers are nearby, & walking distance to the LRT. Several upgrades some of which include new furnace & water tank, shingles, sump pump, AC, new doors & garage door.

Built in 1990

Essential Information

MLS® # E4445813

Price \$519,900



Bedrooms	3
Bathrooms	3.00
Full Baths	2
Half Baths	2
Square Footage	1,999
Acres	0.00
Year Built	1990
Type	Single Family
Sub-Type	Detached Single Family
Style	2 Storey
Status	Active

Community Information

Address	5011 142 Avenue
Area	Edmonton
Subdivision	York
City	Edmonton
County	ALBERTA
Province	AB
Postal Code	T5A 4R8

Amenities

Amenities	Air Conditioner, Bar, Deck, No Smoking Home, See Remarks
Parking	Double Garage Attached

Interior

Interior Features	ensuite bathroom
Appliances	Dishwasher-Built-In, Dryer, Garage Control, Garage Opener, Hood Fan, Refrigerator, Stove-Electric, Washer, Window Coverings
Heating	Forced Air-1, Natural Gas
Stories	2
Has Basement	Yes
Basement	Full, Finished

Exterior

Exterior	Wood, Vinyl
Exterior Features	Cul-De-Sac, Flat Site, Landscaped, Playground Nearby, Public Transportation, Schools
Roof	Asphalt Shingles

Construction	Wood, Vinyl
Foundation	Concrete Perimeter

School Information

Elementary	York Sch K-6
Middle	Steel Height Sch 7-9
High	M.E. Lazerte 10-12

Additional Information

Date Listed	July 3rd, 2025
Days on Market	11
Zoning	Zone 02

DATA IS DEEMED RELIABLE BUT IS NOT GUARANTEED ACCURATE BY THE REALTORS® ASSOCIATION OF EDMONTON. COPYRIGHT 2025 BY THE REALTORS® ASSOCIATION OF EDMONTON. ALL RIGHTS RESERVED. Trademarks are owned or controlled by the Canadian Real Estate Association (CREA) and identify real estate professionals who are members of CREA (REALTOR®, REALTORS®) and/or the quality of services they provide (MLS®, Multiple Listing Service®)

Listing information last updated on July 14th, 2025 at 7:17am MDT