

## \$350,000 - 66 330 Bulyea Road, Edmonton

MLS® #E4445716

**\$350,000**

3 Bedroom, 1.50 Bathroom, 1,203 sqft

Condo / Townhouse on 0.00 Acres

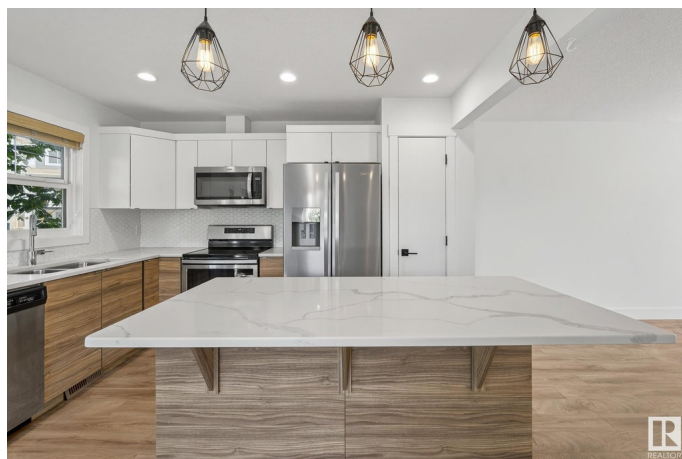
Bulyea Heights, Edmonton, AB

THIS IS IT!! FORMER SHOWHOME, END UNIT, WITH A/C and TONS OF UPGRADES (like extra south facing windows) FOR SALE!! Perfect for the professional or young family as it is right next to George H Luck school and the Brookview ice rink and Community League! This home is stylish and functional with it's BRIGHT open concept main floor that features 2 toned cabinetry, corian counters, stainless appliances, island with breakfast bar area, dining area (with movable electric fireplace) and a very spacious living room! The 3 bedrooms upstairs are great sizes (primary has a walk-in closet). Also includes water softener, 2 energized parking stalls and a full unfinished basement for storage/home gym etc.

Built in 2017

### Essential Information

MLS® #	E4445716
Price	\$350,000
Bedrooms	3
Bathrooms	1.50
Full Baths	1
Half Baths	1
Square Footage	1,203
Acres	0.00



Year Built	2017
Type	Condo / Townhouse
Sub-Type	Townhouse
Style	2 Storey
Status	Active

### Community Information

Address	66 330 Bulyea Road
Area	Edmonton
Subdivision	Bulyea Heights
City	Edmonton
County	ALBERTA
Province	AB
Postal Code	T6R 0W8

### Amenities

Amenities	Air Conditioner, Parking-Plug-Ins, Parking-Visitor, Vinyl Windows
Parking Spaces	2
Parking	Stall

### Interior

Appliances	Air Conditioning-Central, Alarm/Security System, Dishwasher-Built-In, Dryer, Microwave Hood Fan, Refrigerator, Stove-Electric, Washer, Window Coverings
Heating	Forced Air-1, Natural Gas
Stories	2
Has Basement	Yes
Basement	Full, Unfinished

### Exterior

Exterior	Wood, Vinyl
Exterior Features	Flat Site, Low Maintenance Landscape, No Back Lane, Park/Reserve, Schools, Shopping Nearby
Roof	Asphalt Shingles
Construction	Wood, Vinyl
Foundation	Concrete Perimeter

### School Information

Elementary	George H Luck
------------	---------------

**Additional Information**

Date Listed	July 3rd, 2025
Days on Market	10
Zoning	Zone 14
Condo Fee	\$267

DATA IS DEEMED RELIABLE BUT IS NOT GUARANTEED ACCURATE BY THE REALTORS® ASSOCIATION OF EDMONTON. COPYRIGHT 2025 BY THE REALTORS® ASSOCIATION OF EDMONTON. ALL RIGHTS RESERVED.Trademarks are owned or controlled by the Canadian Real Estate Association (CREA) and identify real estate professionals who are members of CREA (REALTOR®, REALTORS®) and/or the quality of services they provide (MLS®, Multiple Listing Service®)

Listing information last updated on July 13th, 2025 at 8:32am MDT