

\$0 - 9159 25 Avenue, Edmonton

MLS® #E4445611

\$0

0 Bedroom, 0.00 Bathroom,
Land Commercial on 0.00 Acres

Parsons Industrial, Edmonton, AB

Prime Commercial Lease Opportunity Across from Costco! Located in a high-traffic area with excellent exposure and large shared parking, this site offers 3,000 to 10,000 sq ft of customizable space—perfectly suited to your vision. Zoned BE, it supports a wide range of light industrial and small commercial uses. Whether you're expanding or launching something new, we're™ ready to build to suit your specific business needs. Bring your ideas and let's create the ideal space for your next chapter. Take the first step toward your business growth!

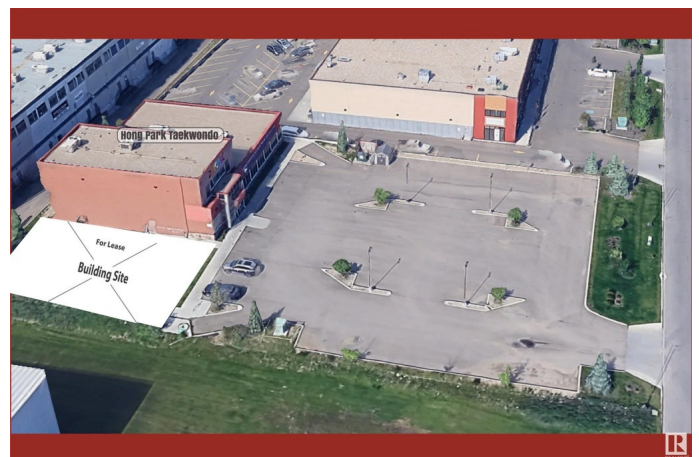
Built in 2014

Essential Information

MLS® #	E4445611
Bathrooms	0.00
Acres	0.00
Year Built	2014
Type	Land Commercial
Status	Active

Community Information

Address	9159 25 Avenue
Area	Edmonton
Subdivision	Parsons Industrial
City	Edmonton



County	ALBERTA
Province	AB
Postal Code	T6N 0A5

Exterior

Exterior	See Remarks
Construction	See Remarks

Additional Information

Date Listed	July 2nd, 2025
Days on Market	65
Zoning	Zone 41

DATA IS DEEMED RELIABLE BUT IS NOT GUARANTEED ACCURATE BY THE REALTORS® ASSOCIATION OF EDMONTON. COPYRIGHT 2025 BY THE REALTORS® ASSOCIATION OF EDMONTON. ALL RIGHTS RESERVED. Trademarks are owned or controlled by the Canadian Real Estate Association (CREA) and identify real estate professionals who are members of CREA (REALTOR®, REALTORS®) and/or the quality of services they provide (MLS®, Multiple Listing Service®)

Listing information last updated on September 4th, 2025 at 10:02pm MDT