

## \$828,000 - 7232 May Road, Edmonton

MLS® #E4445523

**\$828,000**

4 Bedroom, 4.00 Bathroom, 2,347 sqft

Single Family on 0.00 Acres

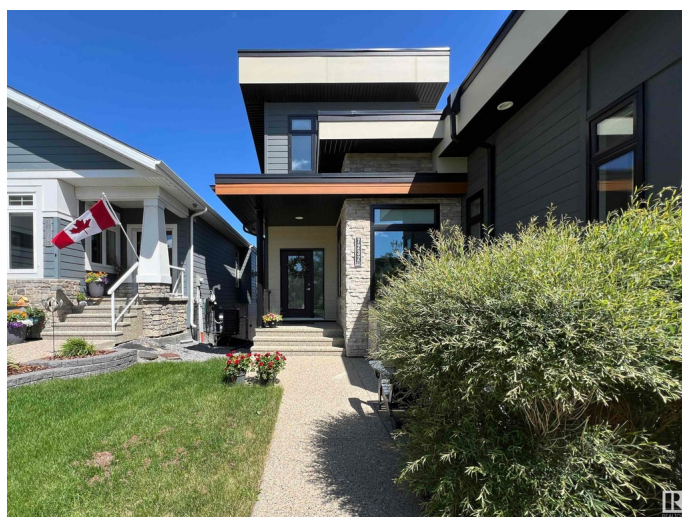
Magrath Heights, Edmonton, AB

Welcome to this stunning duplex by Kimberly Homes in the prestigious Magrath Heights—an upscale, serene community known for its family-friendly environment and beautiful green spaces. Boasting over 2300+ sqft, this home features soaring 9'™ ceilings on the main floor with open-to-above design and a grand primary suite with 10'™ ceiling. Enjoy abundant natural light from huge windows, a gourmet kitchen with many upgrades plus the convenience of the main floor office and a rare triple attached garage. Upstairs offers two spacious bedrooms and a bright bonus room. The fully finished basement adds a cozy family room, bedroom, and full bath. Gorgeous front landscaping, great city views, steps to Nellie Carlson K-9 school, bus, and scenic MacTaggart ravine trails. A true gem!

Built in 2015

### Essential Information

MLS® #	E4445523
Price	\$828,000
Bedrooms	4
Bathrooms	4.00
Full Baths	4
Square Footage	2,347
Acres	0.00



Year Built	2015
Type	Single Family
Sub-Type	Half Duplex
Style	2 Storey
Status	Active

### Community Information

Address	7232 May Road
Area	Edmonton
Subdivision	Magrath Heights
City	Edmonton
County	ALBERTA
Province	AB
Postal Code	T6R 0V8

### Amenities

Amenities	Ceiling 10 ft., Ceiling 9 ft., Deck, Detectors Smoke, No Animal Home, No Smoking Home, See Remarks, 9 ft. Basement Ceiling
Parking	Triple Garage Attached

### Interior

Interior Features	ensuite bathroom
Appliances	Dishwasher-Built-In, Dryer, Garage Control, Garage Opener, Hood Fan, Oven-Microwave, Refrigerator, Stove-Gas, Washer, Window Coverings
Heating	Forced Air-1, Natural Gas
Stories	3
Has Basement	Yes
Basement	Full, Finished

### Exterior

Exterior	Wood, Fiber Cement, Stone
Exterior Features	Back Lane, Golf Nearby, Landscaped, Playground Nearby, Public Transportation, Schools, Shopping Nearby, View City, See Remarks
Roof	Asphalt Shingles
Construction	Wood, Fiber Cement, Stone
Foundation	Concrete Perimeter

### Additional Information

Date Listed	July 3rd, 2025
Days on Market	3

Zoning	Zone 14
HOA Fees	225
HOA Fees Freq.	Annually

DATA IS DEEMED RELIABLE BUT IS NOT GUARANTEED ACCURATE BY THE REALTORS® ASSOCIATION OF EDMONTON. COPYRIGHT 2025 BY THE REALTORS® ASSOCIATION OF EDMONTON. ALL RIGHTS RESERVED. Trademarks are owned or controlled by the Canadian Real Estate Association (CREA) and identify real estate professionals who are members of CREA (REALTOR®, REALTORS®) and/or the quality of services they provide (MLS®, Multiple Listing Service®)

Listing information last updated on July 6th, 2025 at 12:02am MDT