

\$249,000 - 406 10135 Saskatchewan Drive, Edmonton

MLS® #E4445212

\$249,000

2 Bedroom, 1.50 Bathroom, 1,084 sqft

Condo / Townhouse on 0.00 Acres

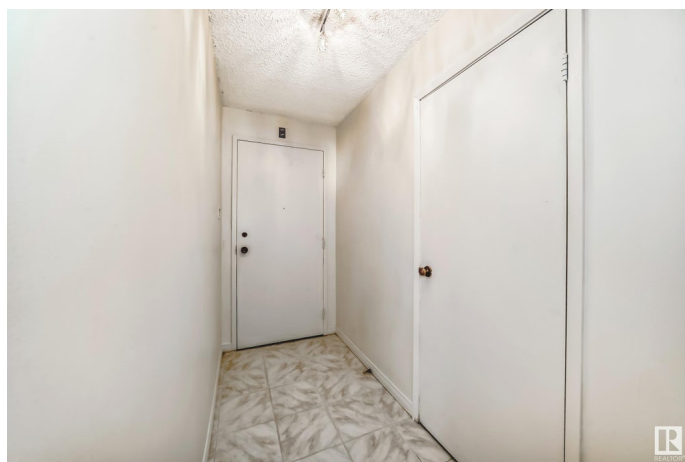
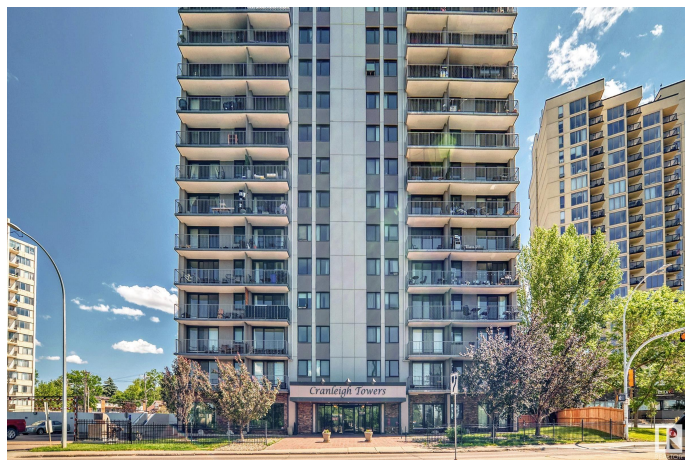
Strathcona, Edmonton, AB

Enjoy stunning river valley and city skyline views from this upgraded 2-bedroom, 2-bath. The open-concept layout perfect for everyday living and entertaining. Step out to a spacious balcony to take in the views. The bright living and dining areas are warm and inviting. The primary bedroom offer a private 2-piece ensuite, while the second bedroom is ideal for guests or a home office. A 4-piece main bath and in-suite laundry add convenience. Includes titled underground parking. Building upgrades include new balcony doors, windows, and fresh exterior paint. Enjoy access to a pool, fitness room, and sauna. Located minutes from the University of Alberta, Whyte Avenue, downtown, and river valley trails—this is the best of city living!

Built in 1973

Essential Information

| | |
|----------------|-----------|
| MLS® # | E4445212 |
| Price | \$249,000 |
| Bedrooms | 2 |
| Bathrooms | 1.50 |
| Full Baths | 1 |
| Half Baths | 1 |
| Square Footage | 1,084 |
| Acres | 0.00 |



| | |
|------------|------------------------|
| Year Built | 1973 |
| Type | Condo / Townhouse |
| Sub-Type | Apartment High Rise |
| Style | Single Level Apartment |
| Status | Active |

Community Information

| | |
|-------------|------------------------------|
| Address | 406 10135 Saskatchewan Drive |
| Area | Edmonton |
| Subdivision | Strathcona |
| City | Edmonton |
| County | ALBERTA |
| Province | AB |
| Postal Code | T6E 4Y9 |

Amenities

| | |
|----------------|--|
| Amenities | Exercise Room, Parking-Visitor, Pool-Indoor, Secured Parking, Security Door, Tennis Courts |
| Parking Spaces | 1 |
| Parking | Parkade, Single Indoor, Underground |
| Has Pool | Yes |

Interior

| | |
|-------------------|---|
| Interior Features | ensuite bathroom |
| Appliances | Dishwasher-Built-In, Dryer, Intercom, Refrigerator, Stove-Electric, Washer, Window Coverings, Curtains and Blinds |
| Heating | Hot Water, Natural Gas |
| # of Stories | 20 |
| Stories | 1 |
| Has Basement | Yes |
| Basement | None, No Basement |

Exterior

| | |
|-------------------|---|
| Exterior | Steel, Concrete |
| Exterior Features | Corner Lot, Park/Reserve, Private Setting, Public Transportation, Ravine View, Schools, Shopping Nearby |
| Roof | Tar & Gravel |
| Construction | Steel, Concrete |
| Foundation | Concrete Perimeter |

School Information

| | |
|------------|----------------------|
| Elementary | King Edward |
| Middle | McKernan Junior High |
| High | Strathcona High |

Additional Information

| | |
|----------------|----------------|
| Date Listed | July 1st, 2025 |
| Days on Market | 59 |
| Zoning | Zone 15 |
| Condo Fee | \$778 |

DATA IS DEEMED RELIABLE BUT IS NOT GUARANTEED ACCURATE BY THE REALTORS® ASSOCIATION OF EDMONTON. COPYRIGHT 2025 BY THE REALTORS® ASSOCIATION OF EDMONTON. ALL RIGHTS RESERVED.Trademarks are owned or controlled by the Canadian Real Estate Association (CREA) and identify real estate professionals who are members of CREA (REALTOR®, REALTORS®) and/or the quality of services they provide (MLS®, Multiple Listing Service®)

Listing information last updated on August 28th, 2025 at 10:17pm MDT