

\$499,900 - 22 Gatewood Avenue, St. Albert

MLS® #E4444435

\$499,900

4 Bedroom, 3.00 Bathroom, 1,201 sqft

Single Family on 0.00 Acres

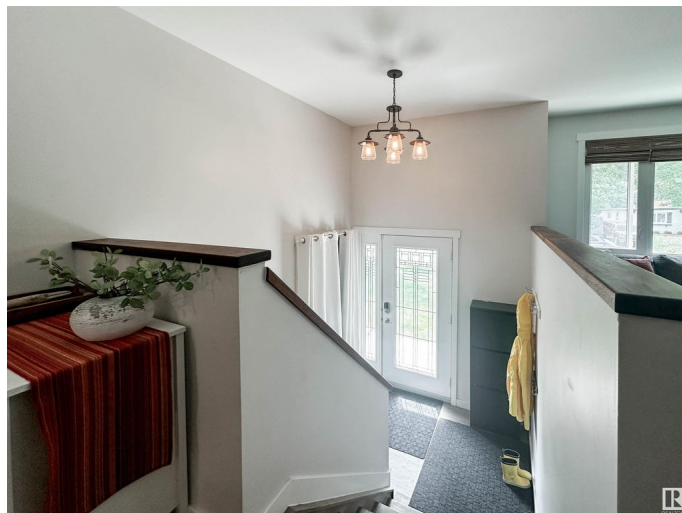
Grandin, St. Albert, AB

Beautifully maintained and updated 4 bedroom home in the sought after neighbourhood of Grandin. Features include upgraded exterior windows and doors, and a warm, modern interior. The kitchen offers stylish cabinetry, subway tile backsplash, granite countertops, centre island, and stainless steel appliances. The open concept living and dining rooms are perfect for entertaining. With 3 bedrooms up and 3 bathrooms including a 3 piece ensuite, this home also boasts a bright, fully finished lower level, enhanced by large bi-level windows. Ideal for families or those looking to downsize. The spacious 26x26 double detached garage includes 220V wiring, plus a covered carport/patio. Enjoy a fenced yard with mature trees and a garden area. A rare gem in a prime location must be seen to be appreciated!

Built in 1972

Essential Information

MLS® #	E4444435
Price	\$499,900
Bedrooms	4
Bathrooms	3.00
Full Baths	3
Square Footage	1,201
Acres	0.00



Year Built	1972
Type	Single Family
Sub-Type	Detached Single Family
Style	Bi-Level
Status	Active

Community Information

Address	22 Gatewood Avenue
Area	St. Albert
Subdivision	Grandin
City	St. Albert
County	ALBERTA
Province	AB
Postal Code	T8N 0Z9

Amenities

Amenities	Air Conditioner, Patio, See Remarks
Parking	Double Garage Detached, Heated, Single Carport

Interior

Interior Features	ensuite bathroom
Appliances	Air Conditioning-Central, Dishwasher-Built-In, Dryer, Garage Control, Garage Opener, Hood Fan, Oven-Built-In, Refrigerator, Storage Shed, Stove-Countertop Electric, Washer, Garage Heater
Heating	Forced Air-1, Natural Gas
Stories	1
Has Basement	Yes
Basement	Full, Finished

Exterior

Exterior	Wood, Brick, Metal, Stucco
Exterior Features	Fenced, Landscaped, Playground Nearby, Public Transportation, Schools, Shopping Nearby, See Remarks
Roof	Asphalt Shingles
Construction	Wood, Brick, Metal, Stucco
Foundation	Concrete Perimeter

Additional Information

Date Listed	June 26th, 2025
Days on Market	11

Zoning

Zone 24

DATA IS DEEMED RELIABLE BUT IS NOT GUARANTEED ACCURATE BY THE REALTORS® ASSOCIATION OF EDMONTON. COPYRIGHT 2025 BY THE REALTORS® ASSOCIATION OF EDMONTON. ALL RIGHTS RESERVED. Trademarks are owned or controlled by the Canadian Real Estate Association (CREA) and identify real estate professionals who are members of CREA (REALTOR®, REALTORS®) and/or the quality of services they provide (MLS®, Multiple Listing Service®)

Listing information last updated on July 7th, 2025 at 6:32am MDT