

# \$364,500 - 317 501 Palisades Way, Sherwood Park

MLS® #E4444026

**\$364,500**

2 Bedroom, 2.00 Bathroom, 1,127 sqft  
Condo / Townhouse on 0.00 Acres

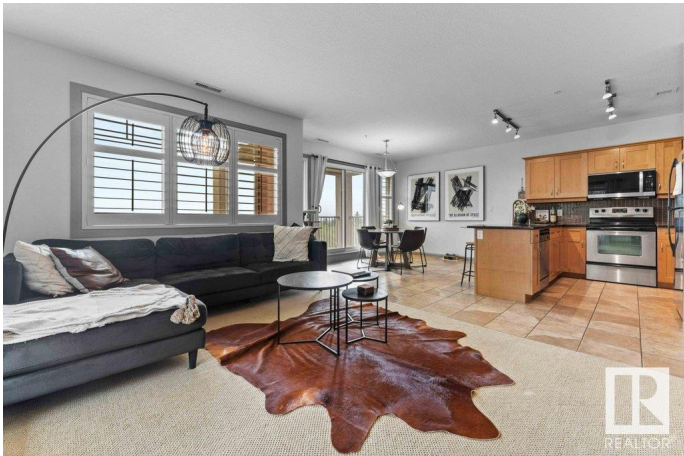
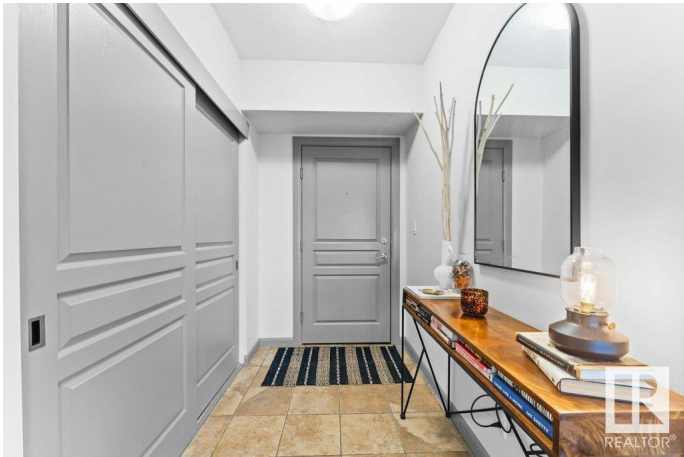
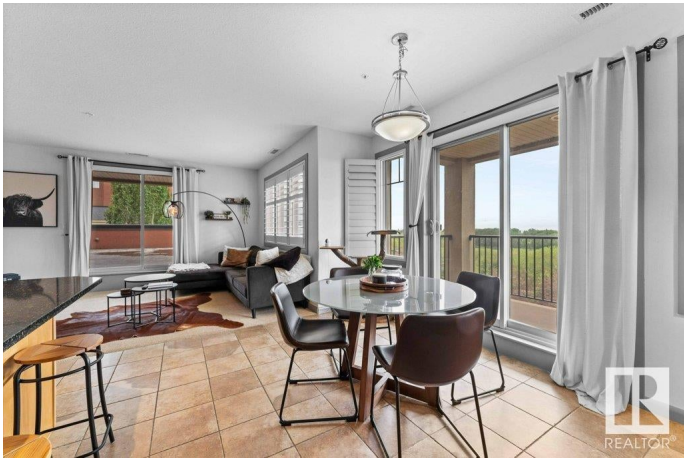
Centennial Village, Sherwood Park, AB

**\*\*First time on the market!\*\*** This immaculate NORTHWEST CORNER UNIT features 2 Bedrooms, and 2 full Bathrooms. The Palisades Condo offers luxury and convenience in a adult living - quiet cul-de-sac area backing onto a beautiful park. Enjoy TWO private balconies, an oversized outdoor space perfect for those entertaining - one balcony is north facing, the larger one west facing. Featuring granite countertops throughout, the kitchen offers open concept with a large dining area. Completing the unit is an extra-large in-unit storage space with in-suite washer and dryer, a underground separate storage unit, and two parking stalls—one underground and one covered with plug-in. Located in desirable Sherwood Park, near Emerald Hills, this rare gem combines comfort, space, and tranquility. Donâ€™t miss this unique opportunity!

Built in 2008

## Essential Information

MLS® #	E4444026
Price	\$364,500
Bedrooms	2
Bathrooms	2.00
Full Baths	2
Square Footage	1,127
Acres	0.00



Year Built	2008
Type	Condo / Townhouse
Sub-Type	Lowrise Apartment
Style	Single Level Apartment
Status	Active

### **Community Information**

Address	317 501 Palisades Way
Area	Sherwood Park
Subdivision	Centennial Village
City	Sherwood Park
County	ALBERTA
Province	AB
Postal Code	T8H 0H8

### **Amenities**

Amenities	Closet Organizers, Deck, Detectors Smoke, No Smoking Home, Patio, Social Rooms, See Remarks, Storage Cage
Parking Spaces	2
Parking	Stall, Underground

### **Interior**

Interior Features	ensuite bathroom
Appliances	Dishwasher-Built-In, Dryer, Refrigerator, Stove-Electric, Washer, Window Coverings
Heating	Forced Air-1, Natural Gas
# of Stories	4
Stories	4
Has Basement	Yes
Basement	None, No Basement

### **Exterior**

Exterior	Concrete, Stucco
Exterior Features	Backs Onto Park/Trees, Cul-De-Sac, Fruit Trees/Shrubs, Landscaped, No Through Road, Playground Nearby, Schools, Shopping Nearby, See Remarks
Roof	EPDM Membrane
Construction	Concrete, Stucco
Foundation	Concrete Perimeter

**Additional Information**

Date Listed	June 24th, 2025
Days on Market	7
Zoning	Zone 25
Condo Fee	\$728

DATA IS DEEMED RELIABLE BUT IS NOT GUARANTEED ACCURATE BY THE REALTORS® ASSOCIATION OF EDMONTON. COPYRIGHT 2025 BY THE REALTORS® ASSOCIATION OF EDMONTON. ALL RIGHTS RESERVED.Trademarks are owned or controlled by the Canadian Real Estate Association (CREA) and identify real estate professionals who are members of CREA (REALTOR®, REALTORS®) and/or the quality of services they provide (MLS®, Multiple Listing Service®)

Listing information last updated on July 1st, 2025 at 8:17am MDT