

\$499,000 - 5596 Stevens Crescent, Edmonton

MLS® #E4443828

\$499,000

4 Bedroom, 3.50 Bathroom, 1,356 sqft

Single Family on 0.00 Acres

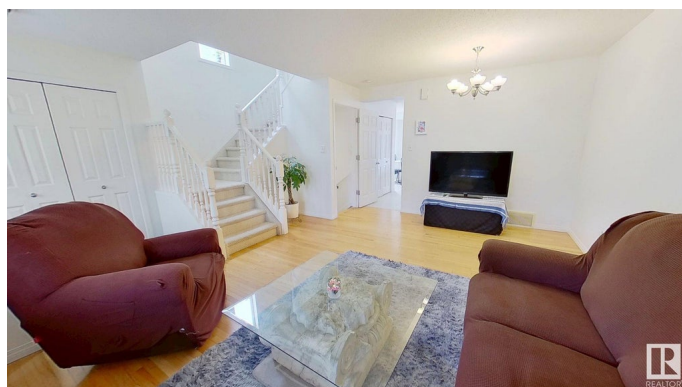
South Terwillegar, Edmonton, AB

Upgraded 3-Bed Home with Finished Basement – in Terwillegar South! Beautiful 3 bed, 2.5 bath home plus a fully finished basement in a quiet, family-friendly neighborhood. Features include new roof, new stainless steel appliances, open-concept main floor, spacious kitchen, and large primary suite with ensuite. Landscaped yard with deck and double detached garage. Close to parks, top-rated schools, and Windermere shopping. Quick access to Henday & Terwillegar Drive.

Built in 2006

Essential Information

MLS® #	E4443828
Price	\$499,000
Bedrooms	4
Bathrooms	3.50
Full Baths	3
Half Baths	1
Square Footage	1,356
Acres	0.00
Year Built	2006
Type	Single Family
Sub-Type	Detached Single Family
Style	2 Storey
Status	Active



Community Information

Address	5596 Stevens Crescent
Area	Edmonton
Subdivision	South Terwillegar
City	Edmonton
County	ALBERTA
Province	AB
Postal Code	T6R 0A4

Amenities

Amenities	Detectors Smoke, Exercise Room, Front Porch, Hot Tub, Hot Water Natural Gas, No Animal Home, No Smoking Home, Vinyl Windows
Parking	2 Outdoor Stalls, 220 Volt Wiring, Double Carport, Double Garage Detached, Rear Drive Access

Interior

Interior Features	ensuite bathroom
Appliances	Dishwasher-Built-In, Dryer, Freezer, Garage Control, Garage Opener, Refrigerator, Stove-Countertop Electric, Washer
Heating	Forced Air-1, Natural Gas
Stories	3
Has Basement	Yes
Basement	Full, Finished

Exterior

Exterior	Wood, Vinyl
Exterior Features	Fenced, Fruit Trees/Shrubs, Playground Nearby, Schools, Vegetable Garden
Roof	Asphalt Shingles
Construction	Wood, Vinyl
Foundation	Concrete Perimeter

Additional Information

Date Listed	June 23rd, 2025
Days on Market	14
Zoning	Zone 14
HOA Fees	125
HOA Fees Freq.	Annually

DATA IS DEEMED RELIABLE BUT IS NOT GUARANTEED ACCURATE BY THE REALTORS® ASSOCIATION OF EDMONTON. COPYRIGHT 2025 BY THE REALTORS® ASSOCIATION OF EDMONTON. ALL RIGHTS

RESERVED.Trademarks are owned or controlled by the Canadian Real Estate Association (CREA) and identify real estate professionals who are members of CREA (REALTOR®, REALTORS®) and/or the quality of services they provide (MLS®, Multiple Listing Service®)

Listing information last updated on July 7th, 2025 at 5:47am MDT