

## \$269,900 - 116 320 Ambleside Link, Edmonton

MLS® #E4443530

**\$269,900**

2 Bedroom, 2.00 Bathroom, 843 sqft

Condo / Townhouse on 0.00 Acres

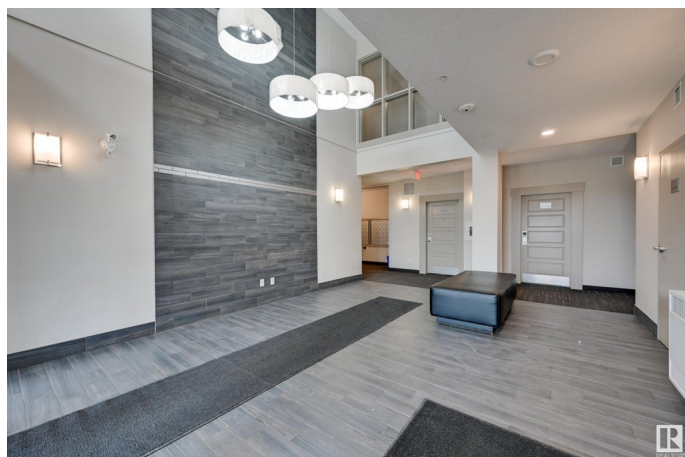
Ambleside, Edmonton, AB

Welcome to L'Attitude Studios in the desirable community of Ambleside. Offering 2 bedrooms, 2 bathrooms and 2 titled parking stalls (one underground & one surface), this unit is a must see! Bright and inviting upon entering with beautiful vinyl plank flooring and large windows. The kitchen island is a dream for entertaining. The built-in work space is perfect for kids, students or those working from home. Bedrooms are located on opposite sides of the unit for maximum privacy. Additional features include: storage cage, exercise room, social room with pool table, and a guest suite available for rent. Conveniently located within walking distance of walking trails, public transit, Currents of Windermere shopping complex, schools, playground, and restaurants.

Built in 2014

### Essential Information

MLS® #	E4443530
Price	\$269,900
Bedrooms	2
Bathrooms	2.00
Full Baths	2
Square Footage	843
Acres	0.00
Year Built	2014



Type	Condo / Townhouse
Sub-Type	Lowrise Apartment
Style	Single Level Apartment
Status	Active

### Community Information

Address	116 320 Ambleside Link
Area	Edmonton
Subdivision	Ambleside
City	Edmonton
County	ALBERTA
Province	AB
Postal Code	T6W 2Z9

### Amenities

Amenities	Carbon Monoxide Detectors, Detectors Smoke, Exercise Room, Guest Suite, No Animal Home, No Smoking Home, Parking-Visitor, Social Rooms, Sprinkler System-Fire, Vinyl Windows, Storage Cage
Parking Spaces	2
Parking	Stall, Underground

### Interior

Interior Features	ensuite bathroom
Appliances	Dishwasher-Built-In, Garage Control, Microwave Hood Fan, Refrigerator, Stacked Washer/Dryer, Stove-Electric, Window Coverings
Heating	Baseboard, Natural Gas, Water
# of Stories	4
Stories	1
Has Basement	Yes
Basement	None, No Basement

### Exterior

Exterior	Wood, Brick, Stucco
Exterior Features	Airport Nearby, Flat Site, Golf Nearby, Playground Nearby, Public Transportation, Schools, Shopping Nearby
Roof	Tar & Gravel
Construction	Wood, Brick, Stucco
Foundation	Concrete Perimeter

### Additional Information

Date Listed	June 20th, 2025
Days on Market	11
Zoning	Zone 56
HOA Fees	50
HOA Fees Freq.	Annually
Condo Fee	\$492

DATA IS DEEMED RELIABLE BUT IS NOT GUARANTEED ACCURATE BY THE REALTORS® ASSOCIATION OF EDMONTON. COPYRIGHT 2025 BY THE REALTORS® ASSOCIATION OF EDMONTON. ALL RIGHTS RESERVED. Trademarks are owned or controlled by the Canadian Real Estate Association (CREA) and identify real estate professionals who are members of CREA (REALTOR®, REALTORS®) and/or the quality of services they provide (MLS®, Multiple Listing Service®)

Listing information last updated on July 1st, 2025 at 1:02am MDT