

\$475,000 - 29 Sunterra Way, Sherwood Park

MLS® #E4443217

\$475,000

3 Bedroom, 3.50 Bathroom, 1,416 sqft
Single Family on 0.00 Acres

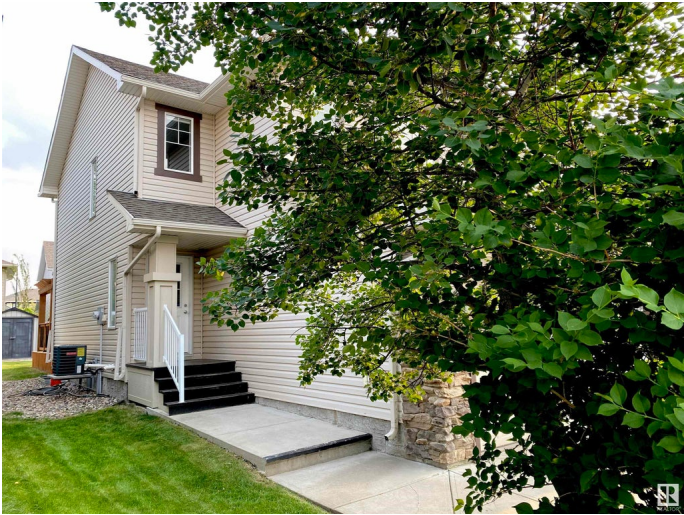
Summerwood, Sherwood Park, AB

This is a pleasant two storey duplex in Sherwood Park, with upgraded finishings and a fully finished basement. Each bedroom has a 3 piece bathroom to match, with a 2 piece bathroom on the main floor. Central air conditioning for those hot summer days, and a huge south facing deck for relaxing in the sun. A gas fireplace for added warmth during those colder seasons, and a gas range for the serious cook in the family. Central vac and a gas barbecue hookup for added convenience. Double attached garage and a large driveway for parking. Located on a quiet street.

Built in 2011

Essential Information

| | |
|----------------|---------------|
| MLS® # | E4443217 |
| Price | \$475,000 |
| Bedrooms | 3 |
| Bathrooms | 3.50 |
| Full Baths | 3 |
| Half Baths | 1 |
| Square Footage | 1,416 |
| Acres | 0.00 |
| Year Built | 2011 |
| Type | Single Family |
| Sub-Type | Half Duplex |



| | |
|--------|----------|
| Style | 2 Storey |
| Status | Active |

Community Information

| | |
|-------------|-----------------|
| Address | 29 Sunterra Way |
| Area | Sherwood Park |
| Subdivision | Summerwood |
| City | Sherwood Park |
| County | ALBERTA |
| Province | AB |
| Postal Code | T8H 0R3 |

Amenities

| | |
|-----------|---|
| Amenities | Air Conditioner, Carbon Monoxide Detectors, Deck, Hot Water Natural Gas, No Smoking Home, Smart/Program. Thermostat |
| Parking | Double Garage Attached, Front Drive Access |

Interior

| | |
|-------------------|---|
| Interior Features | ensuite bathroom |
| Appliances | Air Conditioning-Central, Dishwasher-Built-In, Dryer, Garage Control, Garage Opener, Humidifier-Power(Furnace), Microwave Hood Fan, Oven-Microwave, Refrigerator, Storage Shed, Stove-Gas, Vacuum Systems, Washer |
| Heating | Forced Air-1, Natural Gas |
| Fireplace | Yes |
| Fireplaces | Direct Vent |
| Stories | 3 |
| Has Basement | Yes |
| Basement | Full, Finished |

Exterior

| | |
|-------------------|---|
| Exterior | Wood, Stone, Vinyl |
| Exterior Features | Fenced, Landscaped, Public Transportation, Vegetable Garden |
| Roof | Asphalt Shingles |
| Construction | Wood, Stone, Vinyl |
| Foundation | Concrete Perimeter |

Additional Information

| | |
|----------------|-----------------|
| Date Listed | June 19th, 2025 |
| Days on Market | 12 |

Zoning

Zone 25

DATA IS DEEMED RELIABLE BUT IS NOT GUARANTEED ACCURATE BY THE REALTORS® ASSOCIATION OF EDMONTON. COPYRIGHT 2025 BY THE REALTORS® ASSOCIATION OF EDMONTON. ALL RIGHTS RESERVED. Trademarks are owned or controlled by the Canadian Real Estate Association (CREA) and identify real estate professionals who are members of CREA (REALTOR®, REALTORS®) and/or the quality of services they provide (MLS®, Multiple Listing Service®)

Listing information last updated on July 1st, 2025 at 7:17am MDT