

\$425,000 - 18419 57 Avenue, Edmonton

MLS® #E4441944

\$425,000

3 Bedroom, 2.00 Bathroom, 1,172 sqft

Single Family on 0.00 Acres

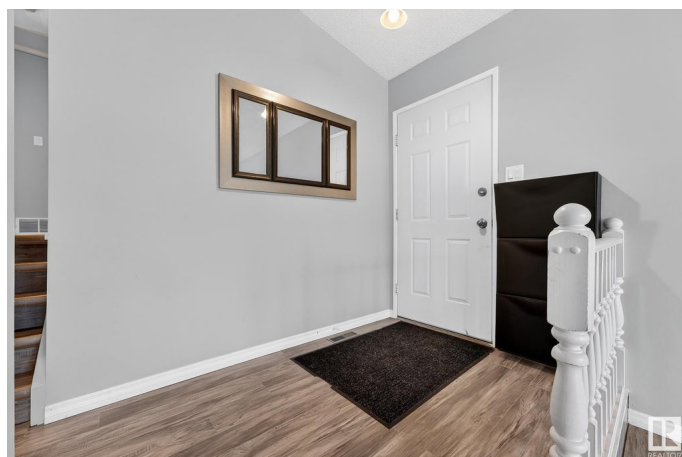
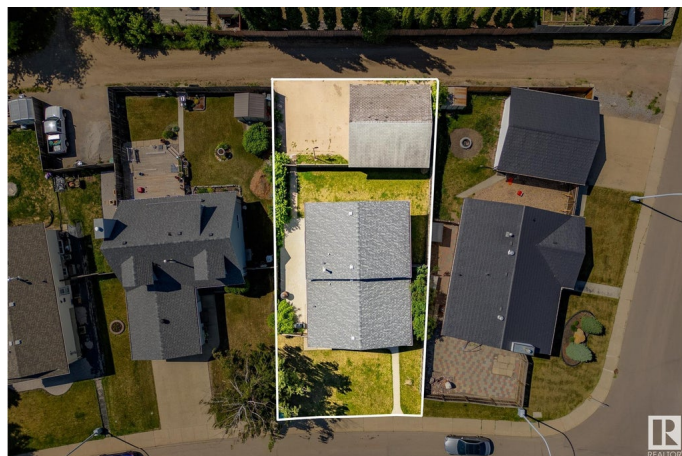
Jamieson Place, Edmonton, AB

Welcome to this well-maintained 4-level split in the desirable community of Jamieson Place. Offering over 1,170 square feet of comfortable living space, this home features 3 spacious bedrooms and 2 full bathrooms. The main floor boasts a bright and airy living room with a beautiful bay window, a dedicated dining area, and a functional kitchen with ample cabinetry. Upstairs, you'll find the primary bedroom, two additional bedrooms, and a 4pc bathroom. The lower level includes a large family room perfect for relaxing or entertaining, along with a second 4 piece bathroom. The secondary basement provides even more versatility with a recreation room, utility room, and extra storage space. Outside, enjoy a fully fenced backyard, perfect for pets or kids, and a double detached garage with back lane access. Located close to schools, parks, shopping, and all the amenities you need—this home is a wonderful opportunity for families or first-time buyers!

Built in 1983

Essential Information

MLS® #	E4441944
Price	\$425,000
Bedrooms	3
Bathrooms	2.00



Full Baths	2
Square Footage	1,172
Acres	0.00
Year Built	1983
Type	Single Family
Sub-Type	Detached Single Family
Style	4 Level Split
Status	Active

Community Information

Address	18419 57 Avenue
Area	Edmonton
Subdivision	Jamieson Place
City	Edmonton
County	ALBERTA
Province	AB
Postal Code	T6M 1Y4

Amenities

Amenities	Off Street Parking, On Street Parking, Detectors Smoke, Vinyl Windows
Parking	Double Garage Detached

Interior

Appliances	Dishwasher-Built-In, Dryer, Hood Fan, Refrigerator, Stove-Electric, Washer, Window Coverings
Heating	Forced Air-1, Natural Gas
Stories	4
Has Basement	Yes
Basement	Full, Finished

Exterior

Exterior	Wood, Vinyl
Exterior Features	Fenced, Flat Site, Landscaped, Playground Nearby, Public Transportation, Schools, Shopping Nearby
Roof	Asphalt Shingles
Construction	Wood, Vinyl
Foundation	Concrete Perimeter

Additional Information

Date Listed June 12th, 2025

Days on Market 4

Zoning Zone 20

DATA IS DEEMED RELIABLE BUT IS NOT GUARANTEED ACCURATE BY THE REALTORS® ASSOCIATION OF EDMONTON. COPYRIGHT 2025 BY THE REALTORS® ASSOCIATION OF EDMONTON. ALL RIGHTS RESERVED. Trademarks are owned or controlled by the Canadian Real Estate Association (CREA) and identify real estate professionals who are members of CREA (REALTOR®, REALTORS®) and/or the quality of services they provide (MLS®, Multiple Listing Service®)

Listing information last updated on June 16th, 2025 at 3:02am MDT