

Courtesy Of Sheldon Casavant Of Century 21 Masters

\$365,000 - 84 804 Welsh Drive, Edmonton

MLS® #E4440857

\$365,000

3 Bedroom, 2.50 Bathroom, 1,369 sqft
Condo / Townhouse on 0.00 Acres

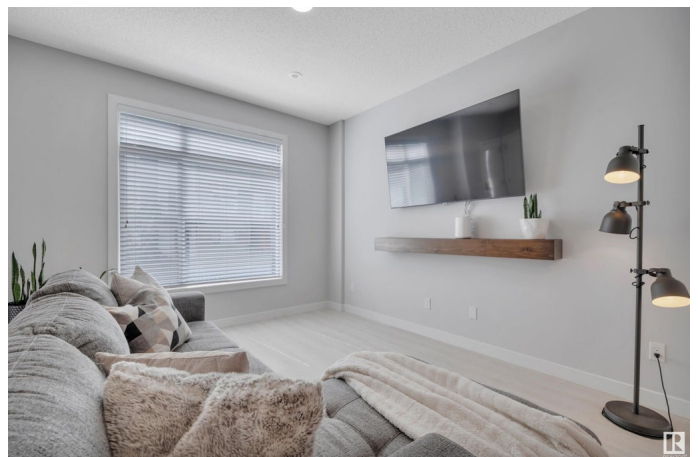
Walker, Edmonton, AB

Welcome to the townhomes at Village at Walker Lakes! This stylish and beautifully kept 3 bed / 2.5 bath townhouse will immediately feel like home. The fenced front yard welcomes you into your spacious and upgraded home, with luxury vinyl flooring and designer tiles and backsplash accenting the space throughout. Enjoy cooking in your open kitchen with quartz countertops, stainless steel appliances, large pantry, and built-in desk / coffee bar. The adjoining dining area and living room provides a bright and spacious place to entertain and spend time with the family. The primary bedroom features a 3-piece ensuite and walk-in closet. Two additional bedrooms, your laundry, and a 4-piece bath completes the upstairs. Providing ample space for 2 vehicles or storage, the attached double garage makes day to day life a breeze. With easy access to Anthony Henday, the airport, walking trails, schools, and shopping, you'll be close to all the action. A must see!

Built in 2019

Essential Information

MLS® #	E4440857
Price	\$365,000
Bedrooms	3
Bathrooms	2.50



Full Baths	2
Half Baths	1
Square Footage	1,369
Acres	0.00
Year Built	2019
Type	Condo / Townhouse
Sub-Type	Townhouse
Style	2 Storey
Status	Active

Community Information

Address	84 804 Welsh Drive
Area	Edmonton
Subdivision	Walker
City	Edmonton
County	ALBERTA
Province	AB
Postal Code	T6X 1Y8

Amenities

Amenities	Ceiling 9 ft., Hot Water Tankless, No Smoking Home, Parking-Visitor, Vinyl Windows, HRV System
Parking Spaces	2
Parking	Double Garage Attached

Interior

Interior Features	ensuite bathroom
Appliances	Dishwasher-Built-In, Dryer, Garage Control, Garage Opener, Microwave Hood Fan, Refrigerator, Stove-Electric, Washer, Window Coverings, TV Wall Mount
Heating	Forced Air-1, Natural Gas
Stories	3
Has Basement	Yes
Basement	Partial, Finished

Exterior

Exterior	Wood, Vinyl
Exterior Features	Fenced, Landscaped, Low Maintenance Landscape, Paved Lane, Public Transportation, Schools, Shopping Nearby, See Remarks

Roof	Asphalt Shingles
Construction	Wood, Vinyl
Foundation	Concrete Perimeter

School Information

Elementary	Ellerslie Campus
Middle	Michael Stremitsky
High	Holy Trinity,JPercy Page

Additional Information

Date Listed	June 6th, 2025
Days on Market	10
Zoning	Zone 53
Condo Fee	\$166

DATA IS DEEMED RELIABLE BUT IS NOT GUARANTEED ACCURATE BY THE REALTORS® ASSOCIATION OF EDMONTON. COPYRIGHT 2025 BY THE REALTORS® ASSOCIATION OF EDMONTON. ALL RIGHTS RESERVED.Trademarks are owned or controlled by the Canadian Real Estate Association (CREA) and identify real estate professionals who are members of CREA (REALTOR®, REALTORS®) and/or the quality of services they provide (MLS®, Multiple Listing Service®)

Listing information last updated on June 16th, 2025 at 1:18pm MDT