

**\$249,900**

0 Bedroom, 0.00 Bathroom,  
Single Family on 0.00 Acres

Meadowview Park\_LEDU, Leduc, AB

Discover the epitome of luxury living with over 5700+ sq.ft lot area in the prestigious Leduc Meadowview community. This large pie shaped lot can accommodate an oversized triple car garage and much more. Minutes away from the international airport. You can pick any builder, or you can build yourself.

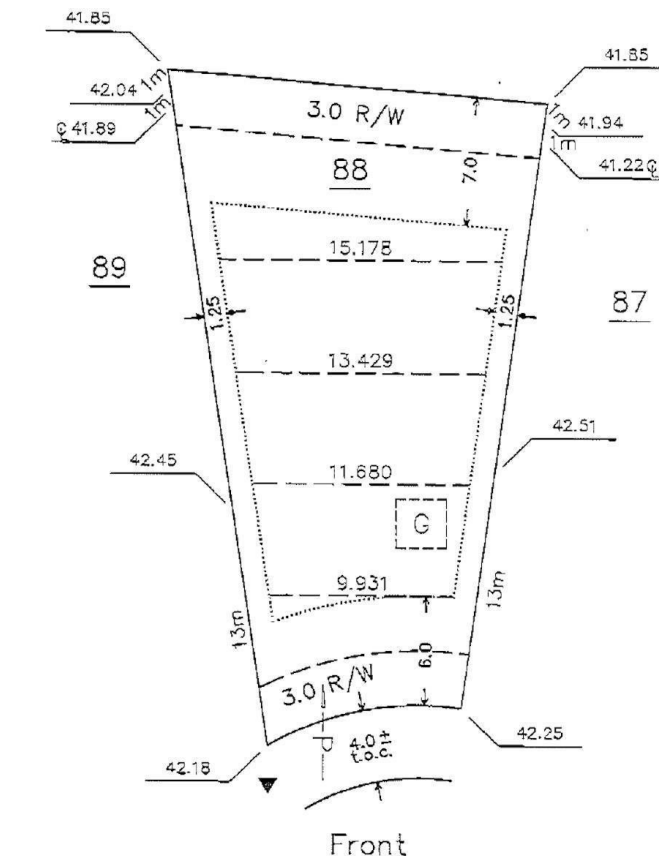
## Essential Information

|           |                 |
|-----------|-----------------|
| MLS® #    | E4439860        |
| Price     | \$249,900       |
| Bathrooms | 0.00            |
| Acres     | 0.00            |
| Type      | Single Family   |
| Sub-Type  | Vacant Lot/Land |
| Status    | Active          |

## Community Information

|             |                      |
|-------------|----------------------|
| Address     | 40 Mckenzie Close    |
| Area        | Leduc                |
| Subdivision | Meadowview Park_LEDU |
| City        | Leduc                |
| County      | ALBERTA              |
| Province    | AB                   |
| Postal Code | T9E 0P2              |

## Exterior



Exterior Features   Cul-De-Sac

**Additional Information**

Date Listed                June 2nd, 2025

Days on Market        76

Zoning                    Zone 81

DATA IS DEEMED RELIABLE BUT IS NOT GUARANTEED ACCURATE BY THE REALTORS® ASSOCIATION OF EDMONTON. COPYRIGHT 2025 BY THE REALTORS® ASSOCIATION OF EDMONTON. ALL RIGHTS RESERVED.Trademarks are owned or controlled by the Canadian Real Estate Association (CREA) and identify real estate professionals who are members of CREA (REALTOR®, REALTORS®) and/or the quality of services they provide (MLS®, Multiple Listing Service®)

Listing information last updated on August 17th, 2025 at 7:17am MDT