

# **\$1,500,000 - 19 27019 Twp Rd 514, Rural Parkland County**

MLS® #E4439598

**\$1,500,000**

5 Bedroom, 3.00 Bathroom, 2,294 sqft

Rural on 4.03 Acres

Pine Wood (Parkland), Rural Parkland County, AB

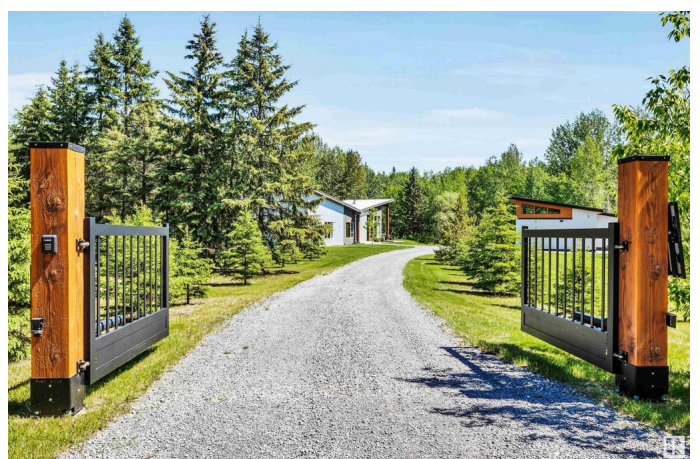
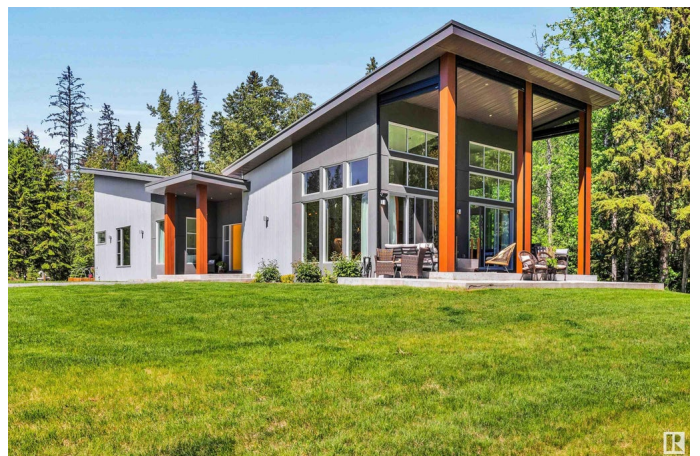
Ideal for relocation buyers, hybrid professionals & those seeking a modern home that offers space w/out sacrificing proximity. This is a rare opportunity to own a home that delivers intentional design, exceptional privacy & future-ready infrastructure! Located less than 15 mins from Edmonton, this custom-built home sits on 4.03 private acres. Designed with modern European craftsmanship, it combines the space & privacy of an acreage w/ seamless access to the city. Inside, 16ft vaulted ceilings, polished concrete floors & a floor-to-ceiling dbl-sided wood-burning F/P anchor the main living area. The kitchen features flat-cut walnut cabinetry, JennAir appliances & quartz surfaces. Recently, the property has been enhanced w/ a heated shop (solar-ready), EV plugs, solar-powered gate, full patio screening, spa-grade hot tub off primary suite, full lawn restoration & walking trail through the trees. A landscaped firepit, raised beds & seasonal vegetables complete the outdoor setting. Fully paved access.

Built in 2017

## **Essential Information**

MLS® #

E4439598



Price	\$1,500,000
Bedrooms	5
Bathrooms	3.00
Full Baths	3
Square Footage	2,294
Acres	4.03
Year Built	2017
Type	Rural
Sub-Type	Detached Single Family
Style	Bungalow
Status	Active

### Community Information

Address	19 27019 Twp Rd 514
Area	Rural Parkland County
Subdivision	Pine Wood (Parkland)
City	Rural Parkland County
County	ALBERTA
Province	AB
Postal Code	T7Y 1G6

### Amenities

Features	Air Conditioner, Ceiling 9 ft., Deck, Fire Pit, Front Porch, No Smoking Home, Vaulted Ceiling, See Remarks, Vacuum System-Roughed-In, Natural Gas BBQ Hookup
----------	--

### Interior

Interior Features	ensuite bathroom
Heating	Forced Air-1, Natural Gas
Stories	2
Has Basement	Yes
Basement	Full, Finished

### Exterior

Exterior	Wood
Exterior Features	Airport Nearby, Fruit Trees/Shrubs, Landscaped, Private Setting, Schools, Stream/Pond, Treed Lot, Vegetable Garden, See Remarks
Construction	Wood
Foundation	Concrete Perimeter

**Additional Information**

Date Listed            May 30th, 2025  
Days on Market      70  
Zoning                Zone 90

DATA IS DEEMED RELIABLE BUT IS NOT GUARANTEED ACCURATE BY THE REALTORS® ASSOCIATION OF EDMONTON. COPYRIGHT 2025 BY THE REALTORS® ASSOCIATION OF EDMONTON. ALL RIGHTS RESERVED.Trademarks are owned or controlled by the Canadian Real Estate Association (CREA) and identify real estate professionals who are members of CREA (REALTOR®, REALTORS®) and/or the quality of services they provide (MLS®, Multiple Listing Service®)  
Listing information last updated on August 8th, 2025 at 1:47am MDT