

## \$788,888 - 283 Darlington Crescent, Edmonton

MLS® #E4439348

**\$788,888**

4 Bedroom, 2.50 Bathroom, 1,671 sqft

Single Family on 0.00 Acres

Donsdale, Edmonton, AB

Divinity in Donsdale. This original-owner bungalow offers over 1,670 sq ft of beautifully maintained living space with 4 bedrooms and 3 bathrooms, including a private ensuite in the spacious primary retreat. Thoughtfully designed and lovingly cared for, this home blends function and elegance with a bright, open-concept layout, soaring ceilings, and an abundance of natural light. The heart of the home is the updated kitchen, featuring newer appliances, cabinets, and ample workspace. The main level also includes a beautiful dinning space and a convenient laundry area. Downstairs, the fully finished basement boasts a massive recreation space, two generous bedrooms, a full bath, and excellent storage. The backyard is peaceful and low-maintenance—ideal for relaxing or entertaining. With standout pride of ownership, this IMPECCABLY kept home is move-in ready and perfectly located near the river valley, the Henday, Whitemud, and West Edmonton Mall.

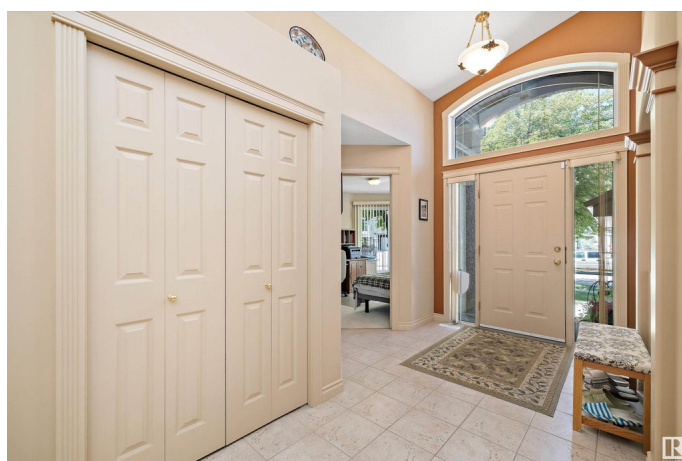
Built in 2001

### Essential Information

MLS® # E4439348

Price \$788,888

Bedrooms 4



Bathrooms	2.50
Full Baths	2
Half Baths	1
Square Footage	1,671
Acres	0.00
Year Built	2001
Type	Single Family
Sub-Type	Detached Single Family
Style	Bungalow
Status	Active

### Community Information

Address	283 Darlington Crescent
Area	Edmonton
Subdivision	Donsdale
City	Edmonton
County	ALBERTA
Province	AB
Postal Code	T6M 2R9

### Amenities

Amenities	Deck, Detectors Smoke, Fire Pit
Parking	Double Garage Attached

### Interior

Interior Features	ensuite bathroom
Appliances	Dishwasher-Built-In, Dryer, Garage Control, Garage Opener, Hood Fan, Oven-Microwave, Refrigerator, Stove-Electric, Washer, Window Coverings
Heating	Forced Air-1, Natural Gas
Stories	2
Has Basement	Yes
Basement	Full, Finished

### Exterior

Exterior	Wood, Stucco
Exterior Features	Fenced, Landscaped, Level Land, Schools, Shopping Nearby
Roof	Wood Shingles
Construction	Wood, Stucco

Foundation                Concrete Perimeter

**School Information**

Elementary                Centennial  
Middle                      S. Bruce Smith  
High                        Jasper Place

**Additional Information**

Date Listed                May 29th, 2025  
Days on Market        18  
Zoning                      Zone 20  
HOA Fees                  413.28  
HOA Fees Freq.        Annually

DATA IS DEEMED RELIABLE BUT IS NOT GUARANTEED ACCURATE BY THE REALTORS® ASSOCIATION OF EDMONTON. COPYRIGHT 2025 BY THE REALTORS® ASSOCIATION OF EDMONTON. ALL RIGHTS RESERVED.Trademarks are owned or controlled by the Canadian Real Estate Association (CREA) and identify real estate professionals who are members of CREA (REALTOR®, REALTORS®) and/or the quality of services they provide (MLS®, Multiple Listing Service®)  
Listing information last updated on June 16th, 2025 at 2:17am MDT