

\$750,000 - 8654 Sloane Court, Edmonton

MLS® #E4439083

\$750,000

5 Bedroom, 3.50 Bathroom, 2,111 sqft

Single Family on 0.00 Acres

South Terwillegar, Edmonton, AB

This stunning home offers a WALK OUT basement and spectacular picturesque views of the POND and PARK . Perfectly located on a quiet cul de sac in the highly sought after neighbourhood of South Terwillegar, this 2 storey family home is sure to impress. The main floor features a spacious floor plan with hardwood floors and large bright windows overlooking the pond. The kitchen offers stainless steel appliances, plenty of cabinets & counter space and a corner pantry. Cozy up in front of your gas fireplace, or work from home in your main floor office. The powder room & laundry area complete the main floor. Upstairs you will find 4 spacious bedrooms with the primary bedroom offering a spa like ensuite and walk in closet with custom shelves. Downstairs you will find an additional 2 bedrooms and 4 pc bathroom. The walk out basement will lead you to your private patio, hot tub, garden area or enjoy your fresh new sod! Additional features of this home include: central air conditioning and central vacuum.

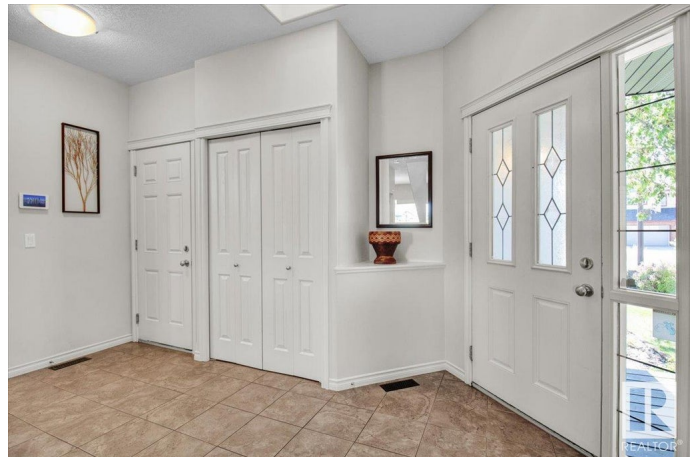
Built in 2007

Essential Information

MLS® # E4439083

Price \$750,000

Bedrooms 5



Bathrooms	3.50
Full Baths	3
Half Baths	1
Square Footage	2,111
Acres	0.00
Year Built	2007
Type	Single Family
Sub-Type	Detached Single Family
Style	2 Storey
Status	Active

Community Information

Address	8654 Sloane Court
Area	Edmonton
Subdivision	South Terwillegar
City	Edmonton
County	ALBERTA
Province	AB
Postal Code	T6R 0K9

Amenities

Amenities	Air Conditioner, Deck, Hot Tub, No Smoking Home, Walkout Basement, Wet Bar, Natural Gas BBQ Hookup, Natural Gas Stove Hookup
Parking	Double Garage Attached
Is Waterfront	Yes

Interior

Interior Features	ensuite bathroom
Appliances	Air Conditioning-Central, Dishwasher-Built-In, Dryer, Garage Control, Garage Opener, Garburator, Microwave Hood Fan, Refrigerator, Stove-Gas, Vacuum System Attachments, Vacuum Systems, Washer, Window Coverings
Heating	Forced Air-1, Natural Gas
Fireplace	Yes
Fireplaces	Glass Door
Stories	3
Has Basement	Yes
Basement	Full, Finished

Exterior

Exterior	Wood, Brick, Vinyl
Exterior Features	Backs Onto Lake, Fenced, Landscaped, Schools, Shopping Nearby
Roof	Asphalt Shingles
Construction	Wood, Brick, Vinyl
Foundation	Concrete Perimeter

School Information

Elementary	Ester Starkman
Middle	Ester Starkman
High	Lillian Osborne

Additional Information

Date Listed	May 29th, 2025
Days on Market	18
Zoning	Zone 14

DATA IS DEEMED RELIABLE BUT IS NOT GUARANTEED ACCURATE BY THE REALTORS® ASSOCIATION OF EDMONTON. COPYRIGHT 2025 BY THE REALTORS® ASSOCIATION OF EDMONTON. ALL RIGHTS RESERVED. Trademarks are owned or controlled by the Canadian Real Estate Association (CREA) and identify real estate professionals who are members of CREA (REALTOR®, REALTORS®) and/or the quality of services they provide (MLS®, Multiple Listing Service®)

Listing information last updated on June 16th, 2025 at 5:17pm MDT