

Courtesy Of Jeff D Jackson Of Bode

## \$639,900 - 19019 20 Avenue, Edmonton

MLS® #E4435944

**\$639,900**

4 Bedroom, 3.50 Bathroom, 2,159 sqft

Single Family on 0.00 Acres

River's Edge, Edmonton, AB

Welcome to the Paragon by Look Master Builder – a stunning 4-bedroom, 3.5-bathroom two-story home that blends style & function. Thoughtfully designed, this home features a main floor bedroom with ensuite, perfect for guests or family, and a side entrance to the basement offering exciting development possibilities. The heart of the home is an open-concept main floor with a stylish kitchen island, a cozy fireplace in the great room, and a walkthrough mudroom that seamlessly connects to a spacious pantry. Upstairs, you'll find a bright bonus room, convenient laundry, and two additional bedrooms, along with a luxurious primary bedroom boasting vaulted ceilings and a spa-inspired 5-piece ensuite with double sinks and a soaking tub. Complete with a double attached garage, the Paragon is built for modern families who value comfort and versatility. Photos are representative. Quick possession available!



Built in 2025

### Essential Information

|           |           |
|-----------|-----------|
| MLS® #    | E4435944  |
| Price     | \$639,900 |
| Bedrooms  | 4         |
| Bathrooms | 3.50      |

|                |                        |
|----------------|------------------------|
| Full Baths     | 3                      |
| Half Baths     | 1                      |
| Square Footage | 2,159                  |
| Acres          | 0.00                   |
| Year Built     | 2025                   |
| Type           | Single Family          |
| Sub-Type       | Detached Single Family |
| Style          | 2 Storey               |
| Status         | Active                 |

### Community Information

|             |                 |
|-------------|-----------------|
| Address     | 19019 20 Avenue |
| Area        | Edmonton        |
| Subdivision | River's Edge    |
| City        | Edmonton        |
| County      | ALBERTA         |
| Province    | AB              |
| Postal Code | T6M 3E8         |

### Amenities

|                |                                 |
|----------------|---------------------------------|
| Amenities      | No Animal Home, No Smoking Home |
| Parking Spaces | 4                               |
| Parking        | Double Garage Attached          |

### Interior

|                   |                           |
|-------------------|---------------------------|
| Interior Features | ensuite bathroom          |
| Appliances        | None                      |
| Heating           | Forced Air-1, Natural Gas |
| Fireplace         | Yes                       |
| Fireplaces        | Mantel                    |
| Stories           | 2                         |
| Has Basement      | Yes                       |
| Basement          | Full, Unfinished          |

### Exterior

|                   |                                                           |
|-------------------|-----------------------------------------------------------|
| Exterior          | Wood, Brick, Vinyl                                        |
| Exterior Features | Park/Reserve, Playground Nearby, Schools, Shopping Nearby |
| Roof              | Asphalt Shingles                                          |
| Construction      | Wood, Brick, Vinyl                                        |

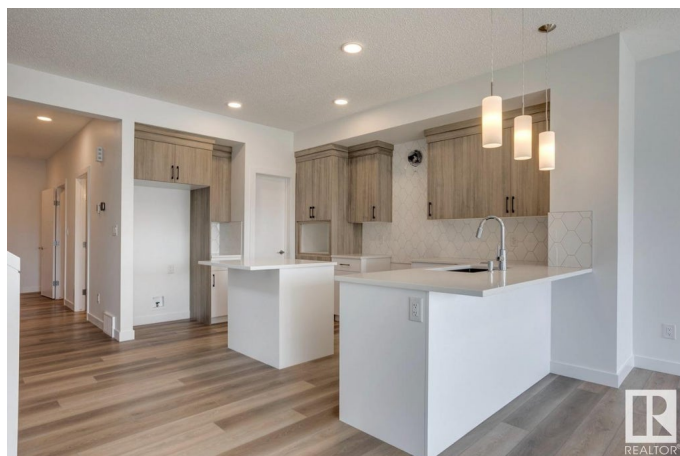
Foundation                      Concrete Perimeter

### **Additional Information**

Date Listed                      May 12th, 2025

Days on Market                62

Zoning                              Zone 57



DATA IS DEEMED RELIABLE BUT IS NOT GUARANTEED ACCURATE BY THE REALTORS® ASSOCIATION OF EDMONTON. COPYRIGHT 2025 BY THE REALTORS® ASSOCIATION OF EDMONTON. ALL RIGHTS RESERVED. Trademarks are owned or controlled by the Canadian Real Estate Association (CREA) and identify real estate professionals who are members of CREA (REALTOR®, REALTORS®) and/or the quality of services they provide (MLS®, Multiple Listing Service®)

Listing information last updated on July 13th, 2025 at 7:32am MDT