

\$350,000 - Hwy 39 & Rr 30, Rural Leduc County

MLS® #E4435664

\$350,000

0 Bedroom, 0.00 Bathroom,
Rural on 58.56 Acres

None, Rural Leduc County, AB

Here is your choice to own a excellent piece of property with lots of possibilities. 58.56 acres on Hwy 39, situated exactly in the NW corner of Hwy 39 & RR 30 by village of WARBURG in Leduc County. Nice property to build your home. These lands are being used for Hay at present. Great piece of of land at this price.

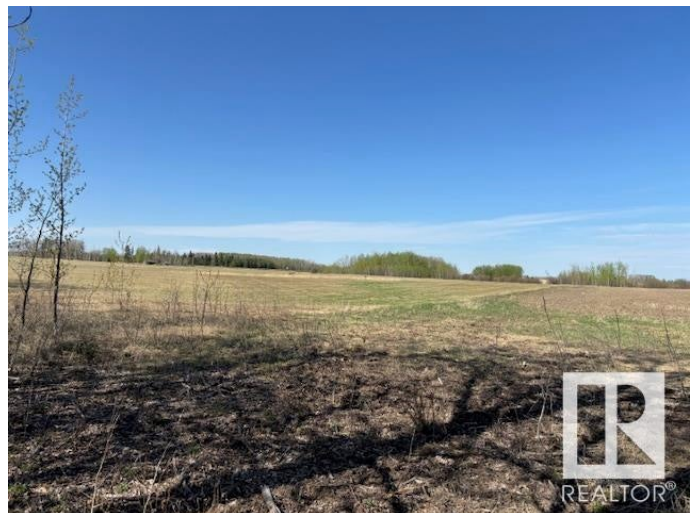
Essential Information

MLS® #	E4435664
Price	\$350,000
Bathrooms	0.00
Acres	58.56
Type	Rural
Sub-Type	Vacant Lot/Land
Status	Active

Community Information

Address	Hwy 39 & Rr 30
Area	Rural Leduc County
Subdivision	None
City	Rural Leduc County
County	ALBERTA
Province	AB
Postal Code	T0C 2T0

Exterior



Exterior Features See Remarks
Lot Description 2,550,873.6 sq ft

Additional Information

Date Listed May 9th, 2025
Days on Market 6
Zoning Zone 90

DATA IS DEEMED RELIABLE BUT IS NOT GUARANTEED ACCURATE BY THE REALTORS® ASSOCIATION OF EDMONTON. COPYRIGHT 2025 BY THE REALTORS® ASSOCIATION OF EDMONTON. ALL RIGHTS RESERVED.Trademarks are owned or controlled by the Canadian Real Estate Association (CREA) and identify real estate professionals who are members of CREA (REALTOR®, REALTORS®) and/or the quality of services they provide (MLS®, Multiple Listing Service®)
Listing information last updated on May 15th, 2025 at 2:02am MDT