

\$234,900 - 48 1904 48 Street, Edmonton

MLS® #E4435134

\$234,900

4 Bedroom, 1.50 Bathroom, 1,195 sqft
Condo / Townhouse on 0.00 Acres

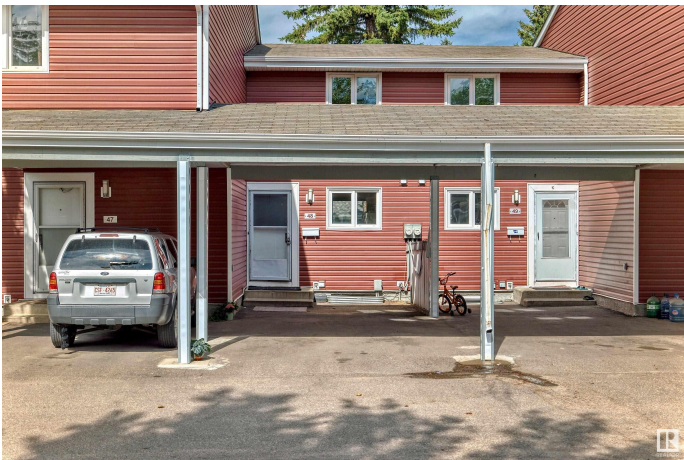
Pollard Meadows, Edmonton, AB

The spacious 2 story townhouse is ideal for the first time home buyer or investor! The property features three bedrooms, offering ample space for family or guests. There is a full bathroom and a half bath, providing convenience for daily use. On the main floor, you'll find kitchen and a welcoming living room that includes a fireplace, creating a cozy atmosphere for gatherings and relaxation. Adjacent to the living room is the dining area, perfect for family meals or entertaining. The property is close to many amenities including bus stop, school and shopping.

Built in 1982

Essential Information

MLS® #	E4435134
Price	\$234,900
Bedrooms	4
Bathrooms	1.50
Full Baths	1
Half Baths	1
Square Footage	1,195
Acres	0.00
Year Built	1982
Type	Condo / Townhouse
Sub-Type	Townhouse
Style	2 Storey



Status	Active
--------	--------

Community Information

Address	48 1904 48 Street
Area	Edmonton
Subdivision	Pollard Meadows
City	Edmonton
County	ALBERTA
Province	AB
Postal Code	T6L 5H3

Amenities

Amenities	See Remarks
Parking	Single Carport

Interior

Appliances	Dishwasher-Built-In, Dryer, Refrigerator, Stove-Electric, Washer
Heating	Forced Air-1, Natural Gas
Fireplace	Yes
Fireplaces	Stone Facing
Stories	2
Has Basement	Yes
Basement	Full, Partially Finished

Exterior

Exterior	Wood
Exterior Features	See Remarks
Roof	Asphalt Shingles
Construction	Wood
Foundation	Concrete Perimeter

Additional Information

Date Listed	May 8th, 2025
Days on Market	8
Zoning	Zone 29
Condo Fee	\$306

DATA IS DEEMED RELIABLE BUT IS NOT GUARANTEED ACCURATE BY THE REALTORS® ASSOCIATION OF EDMONTON. COPYRIGHT 2025 BY THE REALTORS® ASSOCIATION OF EDMONTON. ALL RIGHTS RESERVED. Trademarks are owned or controlled by the Canadian Real Estate Association (CREA) and identify real estate professionals who are members of CREA (REALTOR®, REALTORS®) and/or the quality of services they

provide (MLS®®, Multiple Listing Service®®)
Listing information last updated on May 16th, 2025 at 3:32pm MDT