

## \$329,900 - 7 90 Liberton Drive, St. Albert

MLS® #E4434825

**\$329,900**

3 Bedroom, 2.50 Bathroom, 1,559 sqft  
Condo / Townhouse on 0.00 Acres

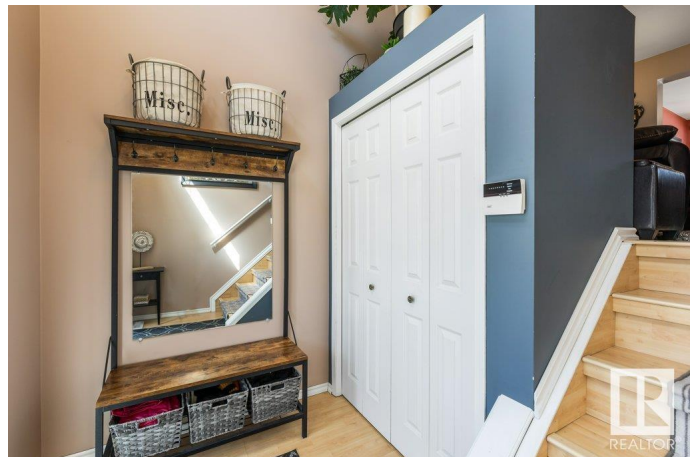
Lacombe Park, St. Albert, AB

Welcome to this beautifully maintained and fully move-in ready townhome offering over 1500sqft and featuring 3 spacious bedrooms and 2.5 bathrooms. The heart of the home is a newly renovated kitchen offering plenty of storage, a central island, sleek modern backsplash, and stainless steel appliances—perfect for everyday living and entertaining. Just off the kitchen is a renovated 2pce bathroom. Enjoy the versatile layout with a cozy front living room, a generous formal dining area, and a large, inviting family room complete with a gas fireplace. There are three well-sized bedrooms, including a primary suite that boasts a walk-in closet and a luxurious 4-piece ensuite with a separate jetted tub. The main bathroom is a standout with a relaxing steam shower. Step outside to a private, maintenance-free back deck—ideal for enjoying summer evenings. A double attached garage completes the package on this fantastic property!

Built in 1991

### Essential Information

MLS® #	E4434825
Price	\$329,900
Bedrooms	3
Bathrooms	2.50



Full Baths	2
Half Baths	1
Square Footage	1,559
Acres	0.00
Year Built	1991
Type	Condo / Townhouse
Sub-Type	Townhouse
Style	5 Level Split
Status	Active

### Community Information

Address	7 90 Liberton Drive
Area	St. Albert
Subdivision	Lacombe Park
City	St. Albert
County	ALBERTA
Province	AB
Postal Code	T8N 5Z6

### Amenities

Amenities	Air Conditioner, Deck
Parking	Double Garage Attached

### Interior

Interior Features	ensuite bathroom
Appliances	Air Conditioning-Central, Dishwasher-Built-In, Dryer, Garage Control, Garage Opener, Microwave Hood Fan, Refrigerator, Stove-Electric, Washer
Heating	Forced Air-1, Natural Gas
Fireplace	Yes
Fireplaces	Mantel, Tile Surround
Stories	4
Has Basement	Yes
Basement	Full, Unfinished

### Exterior

Exterior	Wood, Brick, Stucco
Exterior Features	Fenced, Landscaped, Private Setting, Public Transportation, Schools, Shopping Nearby, See Remarks

Roof	Asphalt Shingles
Construction	Wood, Brick, Stucco
Foundation	Concrete Perimeter

### **Additional Information**

Date Listed	May 6th, 2025
Days on Market	8
Zoning	Zone 24
Condo Fee	\$469

DATA IS DEEMED RELIABLE BUT IS NOT GUARANTEED ACCURATE BY THE REALTORS® ASSOCIATION OF EDMONTON. COPYRIGHT 2025 BY THE REALTORS® ASSOCIATION OF EDMONTON. ALL RIGHTS RESERVED. Trademarks are owned or controlled by the Canadian Real Estate Association (CREA) and identify real estate professionals who are members of CREA (REALTOR®, REALTORS®) and/or the quality of services they provide (MLS®, Multiple Listing Service®)

Listing information last updated on May 14th, 2025 at 4:47pm MDT